

# Tannenbaum Tour Scheduled Sunday

The Chelsea Child Study club will present its "Tannenbaum Tour" Sunday, Dec. 17 from 6 to 9 p.m. Proceeds will go to the Chelsea High School Scholarship Fund and Outdoor Laboratory. Tickets are available at the Chelsea Drug Store or at any of the participating homes during the tour.

Three more homes to be shown belong to Mr. and Mrs. Robert L. Daniels, 665 Washington St.; Mr. and Mrs. Lawrence Dietle, 1201 Freer Rd.; and Mrs. John Brooks, 2650 Manchester Rd.

The warmth of Christmas welcomes visitors to the Robert L. Daniels home at 665 Washington St. Unusual lighting leads to the front entrance where a garland of dried weeds and an evergreen wreath are hung. From the foyer, guests step down to the living room with its black walnut paneling, rough-edged ceiling beams and a vertical beam at the steps which came from an old grain elevator.

The creative artistry of Mrs. Daniels is seen in her use of fresh and dried materials for her Christmas decorating. Candlelight glows throughout and is reflected in the many pieces of crystal, brass and china which have been collected. The ex-

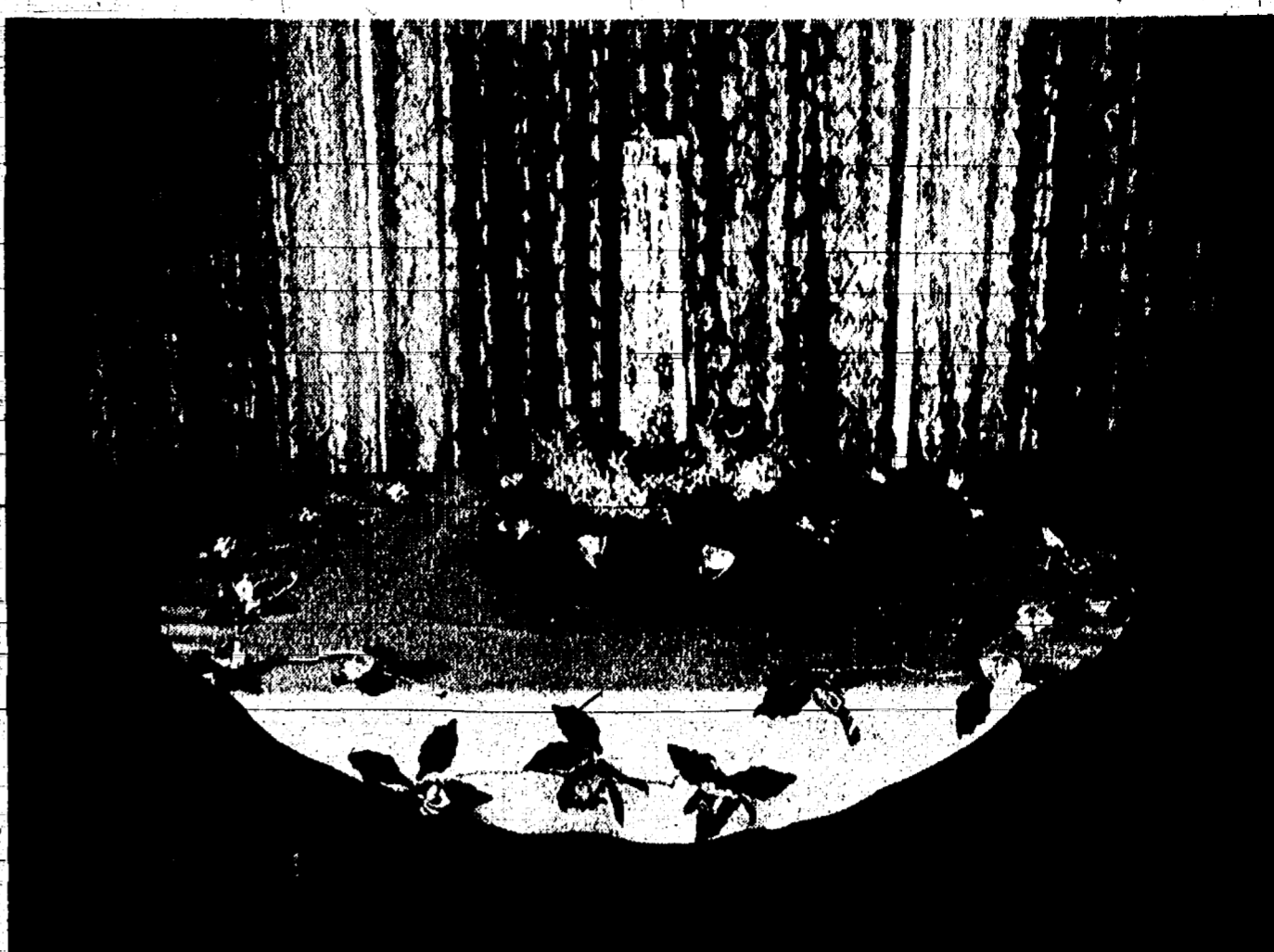
pansive glass windows afford a beautiful view of nature's seasonal changes as well as a brilliant reflection for the Christmas tree, a significant part of their observance of this season.

Tree-trimming was a much-awaited delight for the Daniels and their three children because they have collected and made many interesting ornaments over the years. In lieu of stockings, boots which were once worn by this family as children are gilded and placed among greens and antiques. An early-American cradle serves as a holder for the key holiday packages.

This year, the Daniels will borrow from ancestry and imaginative variation for their dining table Scottish New Year centerpiece: pieces of coal to say "May you have a warm house"; an evergreen bough to say "May you have a long life"; and a loaf of bread to "Wish you a full larder."

The children arrange a creche each year which was made by their maternal grandmother. The many interesting pieces of art and antiques are blended nostalgically into the atmosphere of Christmas.

Mr. and Mrs. Lawrence Dietle of 1201 Freer Rd. have used tiny, white sparkling lights on (Continued on page three)



HAND-MADE SATIN ROSES centered with miniature lights border a felt cover on which rests a huge white candle. This attractive display is one of the many hand-made decorations which Tannenbaum Tour visitors will see Sunday at the home of Mr. and Mrs. John Brooks, 2650 Manchester Rd.

BOOTS AWAIT SANTA'S VISIT to the home of Mr. and Mrs. Robert L. Daniels, 665 Washington St. These unique "stockings" and the cradle—all of which will be filled with gifts on Christmas morning—are part of the decorations to be seen by Tannenbaum Tour participants Sunday.

WEATHER	
	Min. Max. Precip.
Monday, Dec. 6	87 43 0.24
Tuesday, Dec. 7	40 54 0.07
Wednesday, Dec. 8	34 41 Trace
Thursday, Dec. 9	39 36 Trace
Friday, Dec. 10	30 41 0.79
Saturday, Dec. 11	40 46 0.12
Sunday, Dec. 12	37 48 0.02

# The Chelsea Standard

QUOTE  
"If I have done a good job on anything since I have been President, it is to insure that there are plenty of dissenters."  
—Lyndon B. Johnson.

SEVENTY-EIGHTH YEAR—No. 25 14 Pages This Week CHELSEA, MICHIGAN, THURSDAY, DECEMBER 14, 1967 10c per Copy SUBSCRIPTION \$3.00 PER YEAR

## Jaycees Seek Outstanding Young Man

Chelsea Jaycees are seeking nominations for the 1967 "Outstanding Young Man" contest. A distinguished "Service" Award is presented annually by the Jaycees to an area man under 35 years of age who has distinguished himself by making a significant contribution to the welfare of the community during the preceding year, showing evidence of leadership ability in his respective organization, affiliations (church, social or professional), and evidence of progress in his business life.

## Kiwanis Clubs Meet Thursday for Officer Training

The 1968 Division 10 Kiwanis Officers Training session was held at the Ann Arbor Kiwanis club activities building Thursday, Dec. 7, at 7:30 p.m.

## Local Masons Hold Joint Installation

A joint public installation of Olive Lodge No. 154, P&AM, and Olive Chapter No. 140, R.A.M., was held Tuesday night at 7:30 in the Masonic Temple.

## Cast Chosen For Musical Major Roles

Tryouts for the musical, "Bye Bye Birdie," to be presented March 15 and 16 in the Chelsea High school auditorium, were held Monday and Tuesday. More than 70 students vied for 15 roles.

## Christmas Party

Mr. and Mrs. Walter Zeeb, Mr. and Mrs. Anton Nielsen, Mr. and Mrs. Thomas Smith and Mr. and Mrs. Paul Niehaus attended the annual Pinckney Kiwanis club Christmas party Friday, Dec. 12 at 7 p.m.

## Kiwanis Clubs Meet Thursday for Officer Training

The 1968 Division 10 Kiwanis Officers Training session was held at the Ann Arbor Kiwanis club activities building Thursday, Dec. 7, at 7:30 p.m.

## Local Masons Hold Joint Installation

A joint public installation of Olive Lodge No. 154, P&AM, and Olive Chapter No. 140, R.A.M., was held Tuesday night at 7:30 in the Masonic Temple.

## Cast Chosen For Musical Major Roles

Tryouts for the musical, "Bye Bye Birdie," to be presented March 15 and 16 in the Chelsea High school auditorium, were held Monday and Tuesday. More than 70 students vied for 15 roles.

## Christmas Party

Mr. and Mrs. Walter Zeeb, Mr. and Mrs. Anton Nielsen, Mr. and Mrs. Thomas Smith and Mr. and Mrs. Paul Niehaus attended the annual Pinckney Kiwanis club Christmas party Friday, Dec. 12 at 7 p.m.

## Kiwanis Clubs Meet Thursday for Officer Training

The 1968 Division 10 Kiwanis Officers Training session was held at the Ann Arbor Kiwanis club activities building Thursday, Dec. 7, at 7:30 p.m.

## Local Masons Hold Joint Installation

A joint public installation of Olive Lodge No. 154, P&AM, and Olive Chapter No. 140, R.A.M., was held Tuesday night at 7:30 in the Masonic Temple.

## Cast Chosen For Musical Major Roles

Tryouts for the musical, "Bye Bye Birdie," to be presented March 15 and 16 in the Chelsea High school auditorium, were held Monday and Tuesday. More than 70 students vied for 15 roles.

## Christmas Party

Mr. and Mrs. Walter Zeeb, Mr. and Mrs. Anton Nielsen, Mr. and Mrs. Thomas Smith and Mr. and Mrs. Paul Niehaus attended the annual Pinckney Kiwanis club Christmas party Friday, Dec. 12 at 7 p.m.



CHELSEA OYW WINNER: Mrs. Jerry Satterthwaite, center, holds the trophy Sunday at a tea given by the Jaycee Auxiliary in the Methodist church narthex. Also entered in the contest were (left to right) Mrs. Richard Kern, Mrs. Robert Koch and Mrs. Richard McUmber. The winner was announced Sunday at a tea given by the Jaycee Auxiliary in the Methodist church narthex.

## Mrs. Jerry Satterthwaite Chosen Chelsea OYW for '67

At a tea given by the Jaycee Auxiliary Sunday in the Methodist church narthex from 1 to 3 p.m., Mrs. Jerry (Marquita) Satterthwaite of 430 McKinley was announced as the winner of the 1967 Chelsea Outstanding Young Woman contest.

Village President Don Baldwin introduced the candidates—including Mrs. Satterthwaite, Mrs. Richard (Joan) Kern of 530 Chandler St., Mrs. Robert (Betty) Koch of 12255 Seio Church Rd., and Mrs. Richard (Marey) McUmber of 13,200 Noah Rd., Gregory—and presented the winner with a tall marble, gold and red velvet trophy featuring a gold statue of a queen and the inscription, "Chelsea Four Outstanding Young Women, 1967." Mrs. Satterthwaite, the mother of three children, ages 3, 4 and 6, will travel to Saginaw in February to compete in the state-wide FOYW contest, in which four women from the state will be proclaimed as winners.

Chosen for the honor on the basis of her numerous community activities, Mrs. Satterthwaite's credentials include being on the Congregational United Church of Christ's board of education, a member of its choir and women's fellowship, and an advisor of the church's Pilgrim Fellowship for young people. A member of Chelsea Suburbanettes Extension Study Group since 1962, she held the offices of secretary and program chairman for the club. Mrs. Satterthwaite has also been collecting and knitting articles for Caro State Hospital and has worked on projects for the Ypsi-

lanti State Hospital, both in connection with her membership in the Suburbanettes.

Other organizations in which Mrs. Satterthwaite is an active participant include the Troop Consultant Girl Scout Association, which recruits new Girl Scout leaders, and the American Legion Auxiliary to Post No. 31, which she joined in 1963. Mrs. Satter-

## Elected to Gerontology Society Board

The Rev. John M. Fall of 803 W. Middle, has been elected to the board of the Michigan Society of Gerontology, a self-supporting, voluntary state organization of people interested in the study of the aging process. The board governs the 400-member society and determines its programs. The Rev. Fall was chosen for the three-year board position by a nominating committee which recognized his work with the Chelsea Methodist Home, and was elected by the society's membership.

The Rev. Fall's interest in the aged began after he had completed his undergraduate work in business administration at Wayne State University and his seminary studies at Boston University and Oberlin Graduate School of Theology, from which he received a Bachelor of Divinity degree. (Continued on page five)

## Junior High Band Concert Slated Tonight

### 7th, 8th Grade Bands Will Present Both Concert, Christmas Music

The Junior High school seventh and eighth grade bands will present a concert tonight at 7:30 in the Chelsea High school auditorium. Preceding the concert will be a pot-luck dinner for the seventh and eighth grade band students, their parents and other band boosters.

The 55-member seventh grade band, directed by Henry Tinkham, and the 70-member eighth grade band, under the direction of Bruce Galbraith, will each start out its portion of the program with a few concert numbers and close with several Christmas selections. The concert will conclude with audience participation in the singing of some well-known carols.

## Wrestlers Down 'Good' Center Team

Last Friday night, the Chelsea High wrestlers successfully opened their season against a well-respected Michigan Center squad. Chelsea powered to a 34-19 victory over a Michigan Center team which had been undefeated in three previous meets.

## H. Koenn Will Head Fair Board

The Chelsea Community Fair Association held its election of officers Monday night in the McKim Memorial Library board room. The slate includes Herman Koenn, president; Floyd Fowler, vice-president; Everett Van Riper, vice-president and fair co-ordinator; Lloyd Gray, secretary; H. T. Moore, treasurer; David Rowe, past president.

## Capt. Jerry Platt Home from Vietnam

Capt. Jerry Platt returned from service in Vietnam Wednesday, Dec. 6. He has been visiting his mother, Mrs. Harriet Platt, and Chelsea relatives.

## Schools Christmas Vacation Starts Dec. 21

The eagerly-awaited Christmas vacation will begin Thursday, Dec. 21 for students in all Chelsea public schools and St. Mary's school. Classes will end Dec. 20. The 13-day break will extend through Jan. 2, with classes resuming Wednesday, Jan. 3 for all schools, including St. Mary's.

## Capt. Jerry Platt Home from Vietnam

Capt. Jerry Platt returned from service in Vietnam Wednesday, Dec. 6. He has been visiting his mother, Mrs. Harriet Platt, and Chelsea relatives.

## Schools Christmas Vacation Starts Dec. 21

The eagerly-awaited Christmas vacation will begin Thursday, Dec. 21 for students in all Chelsea public schools and St. Mary's school. Classes will end Dec. 20. The 13-day break will extend through Jan. 2, with classes resuming Wednesday, Jan. 3 for all schools, including St. Mary's.

## Capt. Jerry Platt Home from Vietnam

Capt. Jerry Platt returned from service in Vietnam Wednesday, Dec. 6. He has been visiting his mother, Mrs. Harriet Platt, and Chelsea relatives.

## Schools Christmas Vacation Starts Dec. 21

The eagerly-awaited Christmas vacation will begin Thursday, Dec. 21 for students in all Chelsea public schools and St. Mary's school. Classes will end Dec. 20. The 13-day break will extend through Jan. 2, with classes resuming Wednesday, Jan. 3 for all schools, including St. Mary's.

KIWANIS CLUB VISITOR: Santa Claus arrived to greet children of Chelsea Kiwanians at the annual Kiwanis club Christmas party Monday evening in the Congregational church.

Established 1871 **The Chelsea Standard** Telephone GR 6-3981  
 Excellence Award by Michigan Press Association  
 1951-1952-1955-1960-1964-1965-1966  
 Walter P. Leonard, Editor and Publisher



Published every Thursday morning at 300 North Main Street, Chelsea, Mich. 48118, and second class postage paid at Chelsea, Mich., under the Act of March 3, 1879.

RETURN POSTAGE GUARANTEED

Subscription Rates (Payable in Advance)  
 In Michigan: One Year \$9.00, Six Months \$5.75, Single Copies \$ .10  
 Outside Michigan: One Year \$10.00, Six Months \$6.75, Single Copies \$ .10

NATIONAL NEWSPAPER ASSOCIATION National Advertising Representative: MICHIGAN NEWSPAPERS, INC. 287 Michigan Ave. East Lansing, Mich. 48823



**Washington Report**

by Congressman

**MARVIN L. ESCH**

My recent meetings with local farmers highlighted the need for immediate action to stop the steadily worsening farm situation throughout the nation.

Farm parity ratio stands today at 73 percent—the lowest it has been since June of 1934. This means that the farmer today receives less than three-quarters of what the government says is fair. Parity is the fair ratio between what a farmer gets for his products and what his costs are.

Farm income is down 16 percent from last year. While prices paid for food by consumers have risen more than 16 percent in the last 20 years, the prices farmers receive for their products are 2 percent lower than they were in 1947.

The farmer's economic problems are not all natural. Some are government created by an Administration which appears to be systematically discriminating against the farmer by erring in estimates of supplies and other matters. Only a few months ago farmers were told by the government that production must be cut back. Along with that comes another stab in prices received on the farm.

One recent example of the Senate passage of the "Agriculture

Produce Marketing Act of 1967" which is similar to a bill introduced in the House. This legislation will allow farmers to join together in voluntary agricultural marketing programs and to bargain together for fair prices on their products. Collective bargaining has long been an accepted procedure in other aspects of the economy, and early House consideration of this bill would lead to equal rights in this area for the farmer.

I am also concerned about the great number of people leaving farms throughout the nation. 122,000 farms went out of business in 1966 and the Department of Agriculture predicts that 22,000 farms will go out of business during 1967. More than 4 million people have left the farm since 1960. This not only causes hardship and difficulty in the rural areas of our nation, but complicates the already complex problems of our overcrowded cities by pouring more and more population into their faltering economies.

The long-range solution to this problem might be the attraction of small industry into rural areas to provide jobs and employment opportunities without requiring long-distance moves to the major cities. I have introduced legislation to establish a Commission on Balanced Economic Development to explore this subject in great detail and determine what steps may be taken to encourage greater disbursement of population and job opportunities.

**CHELSEA THEATRE**  
CHELSEA, MICH.

24-Hr. Program  
Information: 475-8212

FRI. - SAT. - SUN.  
DEC. 15-16-17

**WE DIDN'T SAY THIS:**  
We have had a great many plays and novels and movies about the gap between generations, but few are as carefully honest as THE FAMILY WAY in handling it. We have read and seen much about rebellious youth, but little that has dealt with the problems of the kids who are forced to stick with the world they never made and to try to find a viable way of life within it. The screen theme is, after all, the one most people make, but it makes for soap operas unless skilfully handled. It takes intelligence to find genuine drama within the common lot and real sensitivity to make of it something consistently touching and funny as THE FAMILY WAY.

**LIFE MAGAZINE SAID IT!**  
A girl, a boy, a tender, funny, terrible wedding night.



Produced by **the family way**

HARTLEY MILLS JOHN MILLS HYWEL BENNETT MARJORIE RHODES (PUB. "BOSTON" INCARTNEY) BILL CARP (MAGNITONS)

NOTE: Children under age 12 admitted only if with parent.  
Highly recommended for parents and mature young people.

PLEASE NOTE: The theatre will be closed Monday, Dec. 18th through Thursday, Dec. 22nd, re-opening on Friday, Dec. 23rd.

**PEARLS of WISDOM**

Taxes are what we pay for civilized society.  
—Justice Oliver Wendell Holmes, Jr.

Cleanliness is a great virtue; but when it is carried to such an extent that you cannot find your books and papers which you left carefully arranged on your table when it gets to be a monomania with man or woman—it becomes a bore.  
—Charles B. Fairbanks.

Perfect love casts out prudery together with fear.  
—Richard Garnett.

The great secret . . . is not having bad manners or good manners or any other particular sort of manners, but having the same manner for all human souls: in short, behaving as if you were in heaven, where there are no third-class carriages, and one soul is as good as another.  
—George Bernard Shaw.

It is not strength but the duration of great sentiments that makes great men.  
—Nietzsche.

As long as war is regarded as wicked, it will always have its fascination. When it is looked upon as vulgar, it will cease to be popular.  
—Oscar Wilde.

I know no method to secure the repeal of bad or obnoxious laws so effectively as their stringent execution.  
—Ulysses S. Grant.

**OLD COMPUTER**  
The abacus, a frame with beads strung on wires, is a forerunner of the modern electronic computers. Although it goes back several thousand years, the abacus is still the most widely used digital computer.

**Howell Livestock Auction**  
Every Monday at 2 p.m.  
★ Southeastern Michigan's largest and most complete Auction Market.  
For Trucking Information Call-Howell 546-2470



**MICHIGAN MIRROR**

By Elmer E. White, Secretary, Michigan Press Association

**Tourist Tears**

Shattered hopes for a record spring-summer tourist season came with the announcement that Michigan's tourist industry suffered a five percent drop from 1965's record high year. William McGraw, director of the Michigan Tourist Council, blamed a combination of dead fish, bad weather, riots, strike threats and Expo '67 for the decline.

Matters are worse when one considers that tourism increased five percent nation-wide. Michigan suffered a greater loss in tourist business than is reflected in the five percent figure.

Tourism in the state has been increasing at about 10 percent per year. It reached an all-time high of \$1,085 billion in 1966.

Some gloom is lifted when annual figures are considered. The Michigan Council on Economic Development reported that 1967 will register more than \$1 billion in tourist spending.

Figures are not in for autumn but last winter's business, led by an upsurge in skiing, increased \$6.6 million over 1966. This autumn is expected to show an increase.

Questionnaires covering autumn and annual tourist sales are being prepared. Seasons are classified in three categories: winter, December through April; spring-summer, May through August; and autumn, September through November. About 70 percent of total business is done in the spring-summer season.

Adverse factors which caused the 1967 decline are mostly uncontrollable, the council feels. Effects of bad weather, strikes and riots cannot be overcome by advertising and promotion, McGraw says. It was unfortunate all these conditions occurred during the same season. Things look brighter for next year, he thinks.

The alewife die-off, which received wide-spread publicity, is expected to be a less severe problem next year.

**Some 'Cs' of Safety**

It is not enough to want to be a good driver. Anyone who has driven behind a woman driver, watched a "draggin'" teen-ager, or waited for an unsure person to drive into an intersection knows it.

**It Takes Competence, Consideration, Care, Caution, and Sooner or Later—Cash.**

All of these, to one degree or another, can be developed by most drivers. With more and more cars on the road, it is necessary that all of us work at it.

**Campus Protestors**

**Creating Their Own Kind of Tyranny**

East Lansing—The minorities on college campuses who urge disruption and obstruction as means to oppose what they consider to be an "immoral war" in Vietnam are fostering their own brand of tyranny.

This was the contention of Robben W. Fleming, president designate of the University of Michigan who spoke at Michigan State University's fall term commencement exercises.

Fleming told 1,143 MSU graduates that Vietnam poses for most campuses "the explosive issue of protest without anarchy, without the tyranny of either the majority or the minority, and without destruction of those principles which make the university worthy of its name."

He said that complete disruption of speeches and campus-recruiting interviews constitute "practices wholly incompatible with the basic tenets of a great university."

Fleming, who will become U. of M. president on Jan. 1, was awarded an honorary Doctor of Laws degree.

**COMPARISON**

The number of admissions of patients with psychiatric diagnosis to general hospitals is estimated to be as great as the number of patients admitted to state and county mental hospitals (342,483 to state and county hospitals throughout the country).

Confidential: Mister Editor, I don't put much store by Bug's opinion on things. He was so lazy he ain't never contributed nothing for the upkeep of the country. He makes me recollect a story my Pa used to tell. He said he had two Plymouth Rock roosters and one of them was so lazy that when the other one crowed for daylight he just nodded his head in approval. But, like Clem Webster was saying at a recent session, these science fellows might come up with a lecture spunk to put to fellers like Bug and he could git to be a wheelhorse in the community.

If ain't that Bug was tight with his money, he just never earns enough to git tight with. Josh Clodhopper was the one that was tight with a dollar. The fellers at the store claim here a few year back when Josh had to have his car towed in and found it was going to cost him \$10, he sneaked the door open and put on the brakes.

I reckon Mister Editor I was about the only one at the country store that was perfect.

Yours truly,  
Uncle Lew.

**MONEY TROUBLE? ONE PLACE TO PAY!**  
Credit Management Service  
662-2565  
342 Municipal Court Bldg. Ann Arbor State Licensed and Bonded

**4 Years Ago . . .**

Thursday, Dec. 12, 1963—The Rev. Lloyd Frank Maxwell, retired Methodist minister who, with his wife, now makes his home in one of the cottages at the Chelsea Methodist Home, has received extensive recognition for publication of three books of poetry he has had published since 1945. This week he presented copies of each of the three publications—"Tales of Tall Tails," "Flowering Dust" and "Healing Symphonia"—to both the McKean Memorial Library and to the Chelsea High School library. Superintendent Charles Cameron presented the books for the school and Mrs. David Strlater, a member of the library board, accepted the volumes for McKean Library.

Welcome news to Chelsea area residents is the announcement this week that the Chelsea Theatre is to be re-opened. George Keast and Harold Schmitt, both of South Lyon, plan to open the theatre on a full-time basis with the first regular program scheduled for Christmas day. The show will begin at 3 p.m. with the box office opening at 2:30 p.m. There will be two afternoon and two evening shows.

Chelsea Bulldogs won both basketball games played this week—the Ypsi-Roosevelt game Friday, 86-45, and the Stockbridge tilt Tuesday, 64-52. Neither was a home game. The first home game is scheduled for Friday, Dec. 20, when Chelsea hosts Dexter, Coach Terry Pokela's former school team and Chelsea's traditional rival.

Chelsea High school and Junior High school choirs will present their annual Christmas concert Tuesday evening, Dec. 14, at 8 p.m. in the high school auditorium. An added feature of this year's concert will be a Christmas pageant presented by the Junior High choir.

**14 Years Ago . . .**

Thursday, Dec. 10, 1953—Cassidy Lake Technical School is to have a new recreation building to replace the one destroyed by fire about a year ago. Capt. C. D. Miles, school superintendent, announced this week. Plans for the building were approved on Tuesday of last week and construction is to begin immediately. The state legislature, at its last session, approved an appropriation of \$100,000 for the new building, Miles stated.

Norman Hinderer and Reuben Lesser were in town Wednesday morning of last week exhibiting a 400-pound black bear that Hinderer had shot Saturday, Nov. 30. Hinderer was hunting at the Gehrke club near Hubbard Lake, Alcona county, as Lesser's guest. Hinderer said the bear was a trophy of his first shot in 14 years of hunting. He plans to have the huge head mounted and have a rug made of the animal's pelt.

Chelsea High eagles successfully opened their Huron League schedule Tuesday, Dec. 1, by defeating Flat Rock, 60-44. The triumph was the Bulldogs' third straight

**JUST REMINISCING**

Items Taken from the Files of The Chelsea Standard

**4 Years Ago . . .**

Thursday, Dec. 12, 1963—The Rev. Lloyd Frank Maxwell, retired Methodist minister who, with his wife, now makes his home in one of the cottages at the Chelsea Methodist Home, has received extensive recognition for publication of three books of poetry he has had published since 1945. This week he presented copies of each of the three publications—"Tales of Tall Tails," "Flowering Dust" and "Healing Symphonia"—to both the McKean Memorial Library and to the Chelsea High School library. Superintendent Charles Cameron presented the books for the school and Mrs. David Strlater, a member of the library board, accepted the volumes for McKean Library.

Welcome news to Chelsea area residents is the announcement this week that the Chelsea Theatre is to be re-opened. George Keast and Harold Schmitt, both of South Lyon, plan to open the theatre on a full-time basis with the first regular program scheduled for Christmas day. The show will begin at 3 p.m. with the box office opening at 2:30 p.m. There will be two afternoon and two evening shows.

Chelsea Bulldogs won both basketball games played this week—the Ypsi-Roosevelt game Friday, 86-45, and the Stockbridge tilt Tuesday, 64-52. Neither was a home game. The first home game is scheduled for Friday, Dec. 20, when Chelsea hosts Dexter, Coach Terry Pokela's former school team and Chelsea's traditional rival.

Chelsea High school and Junior High school choirs will present their annual Christmas concert Tuesday evening, Dec. 14, at 8 p.m. in the high school auditorium. An added feature of this year's concert will be a Christmas pageant presented by the Junior High choir.

**24 Years Ago . . .**

Thursday, Dec. 16, 1943—The American Legion Kiddies' Christmas Party will be held at the Sylvania Theatre on Saturday, Dec. 18 at 2 p.m. All kiddies through the age of 12 years are invited to attend the party. Santa will be there to greet the children and pass out treats. The picture, "Silver Spurs," starring Roy Rogers and Smiley Burnette, a cartoon, and Our Gang Comedy will be the screen entertainment.

Mary Christwell, daughter of Mr. and Mrs. Lyle Christwell, has been chosen by Chelsea High school as D.A.B. Good Citizenship Pherim for the year 1944. Each year this selection is made jointly by the seniors and the faculty of the high school, and is based on dependability, service, leadership and patriotism.

Both rationing boards will be closed on Friday, Dec. 24, the day before Christmas. The boards are now located in the George Dohrbarber shop next to Burg's Drug store, N. Main St.

**34 Years Ago . . .**

Thursday, Dec. 14, 1933—A total of 71 responded to the annual membership drive of the

**Skidproofing Project Reduces Accidents At Busy Intersection**

Lansing—A \$3,000 experimental safety project, was credited recently with playing a major role in reducing accidents at a busy Lansing intersection at a busy Lansing intersection.

The State Highway Commission's Traffic and Safety Division reported on the results of an experimental skidproofing project done in 1964 at the intersection of S. Cedar St. (I-96 Bypass loop) and Holmes Rd. on the south side.

The skidproofing work was done after studies showed that all accidents at the intersection involving Cedar St. traffic occurred on wet pavement.

The skidproofing project involved a sand application on one-eighth of the intersection—was done in the fall of 1964.

There were 60 accidents in 1964 involving Cedar St. traffic in the two years prior to the skidproofing project.

During the two years following the improvement, there were 18 accidents in which 10 persons were injured.

**CONNALLY WON'T RUN**

Austin, Tex.—Governor John Connally Jr. has announced would not seek a fourth term in 1968. The 50-year-old former secretary of the Navy said he did not have the enthusiasm, restlessness and patience for the post.

When printing from a can has been opened before, it is likely to need a strainer to take out any lumps or bits of that may be present. You can use a section of window screen or discarded nylon stocking—or even a piece of fine-mesh strainer—from your local dealer.

Chelsea branch of the Red Cross held Saturday, Nov. 18 and continuing until Thanksgiving. The entertainment Friday evening in the high school gymnasium by the music department of the Chelsea grade school was attended and much enjoyed. Toyonko, by Trubiano, and etta in three acts was presented under the direction of Dorothy Wilson, ably assisted by the elementary teachers. Staines, Miss Dancy, Mrs. P. Han, Misses Brown, Yarn, and Williams. The careful training of the children was evident in the delightful manner which their parts were presented.

When printing from a can has been opened before, it is likely to need a strainer to take out any lumps or bits of that may be present. You can use a section of window screen or discarded nylon stocking—or even a piece of fine-mesh strainer—from your local dealer.

Chelsea branch of the Red Cross held Saturday, Nov. 18 and continuing until Thanksgiving. The entertainment Friday evening in the high school gymnasium by the music department of the Chelsea grade school was attended and much enjoyed. Toyonko, by Trubiano, and etta in three acts was presented under the direction of Dorothy Wilson, ably assisted by the elementary teachers. Staines, Miss Dancy, Mrs. P. Han, Misses Brown, Yarn, and Williams. The careful training of the children was evident in the delightful manner which their parts were presented.

A total of 71 responded to the annual membership drive of the

**HAVE YOUR CARPETS AND FURNITURE CLEANED**  
by the **Duraclean**  
Absorption Process  
NO messy sootings—NO harsh scrubbing—NO upstair fumes. Everything ready to use same day.  
For FREE quotation, phone Duraclean Carpet Cleaners  
Phone Ann Arbor 663-3980

**Santa Claus Brings FURNITURE TOO!**  
SHOP EARLY WHILE SELECTIONS ARE COMPLETE!  
We need the room for additional shipments of bulky furniture arriving so are offering special prices right now—before Christmas. Come see today!

**DAVENPORTS**  
**Home Gifts** for every member of the FAMILY  
**BUNK BEDS**  
**LIVING ROOM SETS**  
**DINING ROOM SETS**  
**BREAKFAST SETS**  
**BEDROOM SETS**  
A Small Down Payment Will Hold Your Selection Until Christmas.

**MEABON'S TV, Furniture & Appliance**  
1170 South M-52, Chelsea Phone GR 5-5191

**Staley SWEETLIX 3-IN-1 Block**  
17'S 3 BLOCKS IN  
1. MOLASSES BLOCK  
2. MINERAL BLOCK  
3. SALT BLOCK  
No other SALT or MINERAL supplement needed . . . and it's consumed like a loose mineral!  
**BLAESS Elevator Co.**  
Div. of Larrowe Feed Co.  
Four Mile Lake Ph. 479-6511

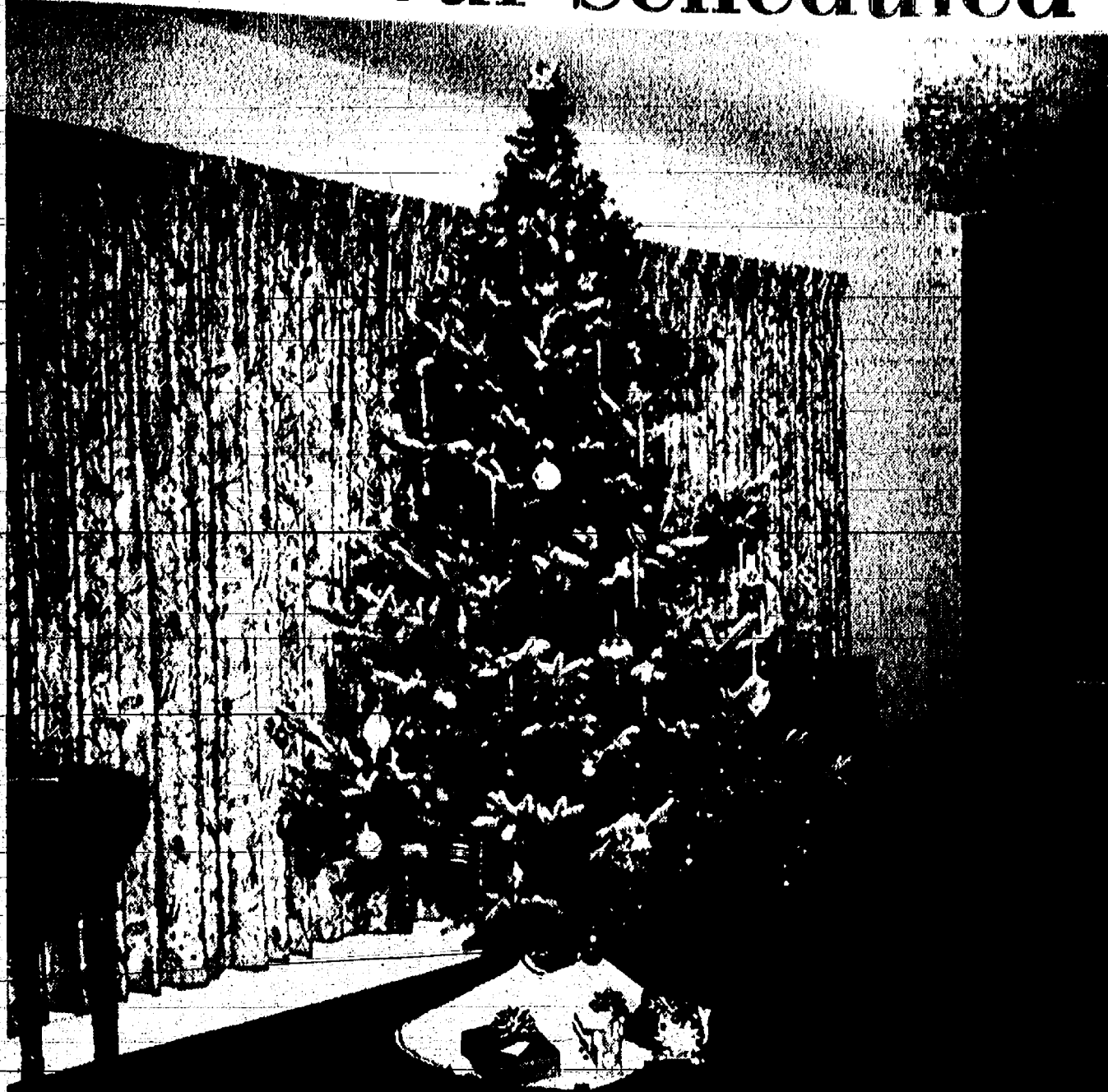
# Tannenbaum Tour Scheduled

(Continued from page one)

evergreens and a door-wreath to convey their festive mood. Peace and tranquility prevail in this 12-year-old ranch-style home. In the living-room window, a vast Christmas tree, also lighted with same twinkling illuminations, is trimmed in gold and green and frosted with "snow." Green and brown tones of room make a soft background for two antique pieces, a heavy drop-leaf table and a set upholstered in a tapestry of blues. A group of etched-over the piano was done by Mrs. Dietle's mother.

Mrs. Dietle has made a felt bag depicting the three wise men and a wreath which are on opposite walls of the area. On the china cabinet is a hand-made ceramic group in and around a manger made of basket material. A lovely Christmas centerpiece adorns the old, round oak dining table which has been refinished and antiqued. Versa-walnut formica and cork chairs make up the end wall of the family room. This was refinished and built by Dietle himself charmingly to family's assemblage of Christmas remembrances and greenery.

The Dietles have three children, their daughter, Carole's name will also be shown. It is decorated in delicate pink and white and reflects the femininity and delicateness of this present. The use of gold, white and candlelight in decorating the home for the holidays creates a formal and quiet atmosphere.



A FROSTED WHITE AND GOLD-TRIMMED Christmas tree adds holiday cheer to the living room of the Lawrence Dietle home, 1201 Freer Rd., one of the homes participating in the Chelsea Child Study club's Tannenbaum Tour scheduled Sunday from 6 to 8 p.m.

where each individual decoration has been hand-made by Mrs. Brooks after hours of planning and patient laboring. The living-dining room glitters with white and gold. Angels of white and gold glide across the walls and a white net wreath, edged with hand-made satin roses centered with tiny lights. Entering the modern, formal parlor through an entry-way of dripping, gilded tulle, you first notice the magnificent tree, cut on the Brooks' own property, and decorated solely with blue, white and gold angels and decorated eggs. The window walls are covered by sky-blue sheer draperies and at each end of the room there is a large turquoise net wreath frosted with silver and intertwined with lights. An alcove features a round, aqua lace-covered table upon which is a spreading array of branches hung with balls and net angels, each differently dressed in blue and silver. A blue velvet couch contrasts with the lovely arrangements of blue and green velvet grapes. An inspiring pen and ink drawing of a Madonna and Child, done by a close friend, graces the west wall.

A pink bath is also shown with a window-strung in beads of pink and rose and framed with deep pink blossoms centered with lights. Mrs. Brooks' creative talent has produced a most unique and distinctive atmosphere for Christmas.

**FILL SANTA'S BAG**  
**at DANCER'S**  
Chelsea's Friendly Dept. Store

We Have 7 Sales Clerks  
To Help You  
or You Can Make Your  
Gift Selections  
at Your Leisure.

**DANCER'S STORE HOURS**  
WILL BE 8:30 a.m. to 9:00 p.m.  
DEC. 18-19-20-21-22-23

your  
**MICHIGAN BANKARD**  
welcome here

**SHOP DANCER'S**  
Chelsea's Friendly Dept. Store

**TOPS Club Requests Servicemen's Addresses**

An appeal for the names and addresses of Chelsea and Dexter area servicemen stationed overseas has been made by members of the TOPS club. The club has already sent several Christmas boxes containing books and magazines to local men serving abroad. Members of TOPS decided to continue this service throughout the year after receiving many favorable comments from the recipients of the overseas packages.

Area residents are asked to send overseas servicemen's names and addresses to the TOPS Club, 402 McKinley St., Chelsea, and keep the members posted on men returning to the states so that the packages may be sent to someone else.

**TRY HOMELITE'S GREAT NEW XL-104 CHAIN SAW**

WITH SOLID STATE IGNITION

Come in and try its Easy-Pull starter. See how easy it pulls. How fast it starts. Notice the big fuel tank, the narrow new bar. Watch it cut through a 10" hardwood log in 15 seconds. Check its automatic chain oiler with manual override. See it now at

**HOWLETT BROS. & HACKNEY**  
Gregory, Michigan

# The Hi-Light

Edited by Students of the Chelsea High School Journalism Club

National Honor Society Dec. 8 honored 28 new members out of the CHS Juniors and seniors. Mike Grob, president of the club, gave opening remarks and introduced Charles Cameron, superintendent of the Chelsea schools. Members of the club, Kathy Fuhs, Joanne Fisher, Debbie Kuhl, and Suzie Knickerbocker, spoke about service, leadership, scholarship, and character, respectively. Sheryl Peffer presented new members, and Mike Grob led the oath for them. The CHS band played several numbers for the processional and recessional.

Mr. Tom Goodale, from Michigan State University, addressed the assembly, consisting of teachers, administrators, and the entire student body. Principal Charles Lane, gave the closing remarks.

New members of the Charles S. Cameron Chapter of the National Honor Society are as follows: Sarah Lindauer, Dorcen Kuhl, Marilyn Hindery, Tom Thomson, Richard Marshall, Kurtis Baiser, Karen Leach, Brenda Collins, Gary Larson, Mike Guay, Robert Powers, Kenny Blass, Judy Salzer, Judy Sanderson, Shel-

ley Baise, Jane Kalmbach, Terri Boyer, Bonnie Parnell, John Westcott, Jim MacDonald, Steve Dickson, Lynn Ferguson, Steve Diederich, Barbara Bauer, Denise Hafner, and Sue Guenther.

CHS Bulldogs were victorious over Dundee, Dec. 1, 75-71. Stockbridge gained a defeat over them, Dec. 5. Next game is Dec. 15 with Milan.

CHS wrestlers met Michigan Center in a home meet Dec. 8.

CHS debaters emerged from their first league debate tournament with one win and three losses. Bulldog debaters will meet at Monroe High school for the second league tournament Dec. 16.

Annual Chelsea College Club will meet Dec. 27 in the CHS cafeteria, 1-15 p.m.

Tri-Hi-Y semi-formal Christmas

Ball was held Dec. 9 in the CHS gym.

**Outstanding Young Man**  
(Continued from page one)

The Outstanding Young Educator (OYE) award, will be presented at the Jaycee Bosses' Night Banquet Jan. 23.

The DSA winner will be entered in the Michigan Jaycee contest, and the state winners will then compete in a national contest for America's 10 Outstanding Young Men.

**FIRST FUR**  
Gold fever sparked California's growth in the 19th century. In 1849 alone, almost 100,000 treasure-seekers reached the territory.

Human beings may be divided into two great classes: those who do things and those who pretend to do things.

**SAVE AT PRO HARDWARE STORES**

## CHRISTMAS SALE

The buying power of 1500 nation-wide PRO Hardware Stores make possible these PROven values!

**PROVEN 20" WILDCAT BICYCLE**

**39<sup>88</sup>**

20" CONVERTIBLE BICYCLE With Training Wheels **\$35<sup>95</sup>**  
26" Boys' or Girls' Proven Missile Bikes **\$36<sup>88</sup>**

**DOMINION**

Portable HAIR DRYER in Travel Case

**17<sup>88</sup>**

Infinite heat control, big bonnet, fingernail drying vent. Adjustable shoulder strap. Teapetry luggage style case.

**FLAMEPROOF SCOTCH PINE CHRISTMAS TREES**

**7' SCOTCH PINE**

**18<sup>88</sup>** LASTS FOR YEARS

Long needles, 4-tip branch construction. Beautiful authentic green color; metal stand; precision-formed for easy assembly.

**PROVEN "D" CELL FLASHLIGHT BATTERY**

Reg. 15c ea. SPECIAL 5 for **66c**

Heavy duty, 1 1/2 V. Long life; leakproof. It will pay to buy extras at this price — shelf life over one year.

**UDICO AUTOMATIC CAN OPENER**

KNIFE SHARPENER List 24.95

PROVEN VALUE **19<sup>88</sup>**

Opens can, removes lid, shuts itself off. Double-lever piercing action; magnetic lid lifter. Choose from assorted decorative colors; chrome trim. 10-year guarantee on cutting and drive wheel against dullness or defect.

**UDICO Deluxe FAMILY SIZE BROILER-BAKING OVEN**

List 22.95 Christmas Special **16<sup>88</sup>**

Broils, grills, toasts, bakes and warms with 6-position thermostat control. Two heating elements, one for broiling, one for baking. Glass door, adjustable porcelain tray, reversible plug. Chrome finish; 10 1/2 x 12 1/2 x 6 1/4.

**PROVEN TWO-SLICE TOASTER**

Christmas Special **12<sup>88</sup>**

Toast bread uniformly, to just the right golden texture. Crumb tray; precision thermostat; sculptured end panels in black and gold.

**VELOCIPEDES**

10-inch ..... \$10.88  
12-inch ..... \$11.88  
16-inch ..... \$13.95

**6-PC. CONDIMENT SET FOR CHRISTMAS**

**4<sup>88</sup>**

Walnut finish tray, holds attractive oil and vinegar cruets, mustard jar, salt shaker and pepper mill.

**Blak & Decker 7 1/4" CIRCULAR SAW and Steel Case**

Special **34<sup>99</sup>**

Approved for 7 1/4" and 6 1/2" blades. 1-HP, 9 amps. Cuts 2" lumber at 45°. Bevel, depth adjustments; saw-dust ejection; rip fence, UL ap.

**WE INVITE YOU TO SEE THE NEW STANLEY POWER TOOLS**

**ICE SKATES**

We Trade Sharpen

**MAY WE SUGGEST**

<p><b>FOR HER</b></p> <p>HAIR DRYER ELECTRIC TOOTHBRUSHES KITCHEN CLOCK ELECTRIC BLANKET SPICE CABINET ELECTRIC MIXER BATHROOM SCALES ELECTRIC IRONS</p>	<p><b>FOR HIM</b></p> <p>ELECTRIC SOCKS CANADIAN CENTENNIAL 30-30 RIFLE ICE SHANTY STOVE BAROMETERS COHO FISHING SETS HUNTING KNIVES TOOLS</p>	<p><b>FOR THEM</b></p> <p>TOYS GAMES SLEDS TOBOGGANS COASTER WAGONS RADIO BASKETBALL GOAL SET BASKETBALL SLEEPING BAG CAMP TOOL SET CAMP AXE</p>
--------------------------------------------------------------------------------------------------------------------------------------------------------------------------------------	------------------------------------------------------------------------------------------------------------------------------------------------------------------------	------------------------------------------------------------------------------------------------------------------------------------------------------------------------------------------

# CHLSEA HARDWARE

110-South Main Street Phone GR 9-6311

Ads Taken Till 5 p.m. Tuesday

IT'S EASY TO BUY-SELL-RENT-HIRE & FIND WITH



WANT ADS

The Chelsea Standard WANT AD RATES PAID IN ADVANCE... CHARGE RATES... DISPLAY WANT ADS... CARDS OF THANKS OR MEMORIALS... COPY DEADLINE...

WANT ADS

CAR RENTAL by the day, week, end, week or month. Full insurance coverage, low rates. Call Lyle Christoff at Palmer Motor Sales, GR 5-3271. FOR SALE—10-gal. aquarium set-up, including stand, fish, and all necessary accessories. \$25. An ideal Christmas gift. May be seen at 10691 Doyle Rd., Stockbridge 26

WANT ADS

FOR SALE — Matching cowboy drapes and bedspread. Phone 479-5051. FOR SALE—V-M stereo, hi-fi, 4-speed record player, 2 speakers, 45 rpm spindle, coral-colored case measures 18 x 18 1/2 x 8 3/4. High Automatic last record shut-off. Like new, \$50. Antique 3-gt. turquoise, \$30. Used kitchen table, formica top, 4 chairs, \$12. Gate-leg drop-leaf table, \$15. Phone after 7 p.m., 426-4988. 25

WANT ADS

TIPS According to my horoscope—I'm supposed to buy everything I see in the Standard Want Ads!

WANT ADS

FOR SALE — 2-bedroom, year-around lake-front home with basement. 98-feet of frontage. Write Box O-31, care of Chelsea Standard. 192f

WANT ADS

FOR SALE — Antique double-barrel, muzzle loader shotgun. Call 475-7858. 25

CUB SCOUT NEWS

DEN 5, PACK 415... DEN 3, PACK 455... DEN 1, PACK 413... MSU Awards 1st Degree Saturday At Commencement

WANT ADS

FOR SALE—1965 Corvair Monza. Low mileage. Martha Scott, Ph. 475-5778. 26

WANT ADS

WAITRESSES WANTED — Full- or part-time. Call GR 9-4211 for appointment. Schumm's Restaurant. 81f

WANT ADS

Christmas Trees CUT YOUR OWN Our plantation will be open again this year on Dec. 9 and 10, and Dec. 16 and 17. Bring the family and have fun.

WANT ADS

FOR RENT—2-bedroom house at North Lake. Phone HA 6-3541. 25

WANT ADS

FOR TRACTORS and equipment. Also New Holland machinery. Sales and service. Cobb & Scherer, Stockbridge. Ph. Ulysses 1-4525. 49f

WANT ADS

HOUSEWIVES — Best part-time job you can find. Earn \$2 to \$3 hourly in spare time. Pick up and deliver Fuller Brush orders near home. Phone Cathy Schultz, 475-7180 after 6 p.m. Your area manager. 181f

WANT ADS

FOR SALE — Ford Falcon, looks like new, 5 new tires. GR 9-3726. 25

WANT ADS

FOR SALE—1964 Chev. stake truck, 2-ton and truck. Phone GR 5-8552 after 8 p.m. 26

WANT ADS

George's Shoe Repair Shop 2nd Floor above Hilltop Plumbing, 106 Park St. Half Soles & Heels Open Monday through Friday at the usual time. Closed all day Saturday. 231f

WANT ADS

BEUTLERS Pierce Rd. between Cavanaugh Lake Rd. and Bush Rd. 25

WANT ADS

AIRLESS SPRAY PAINTING — Interior and exterior. Pincney 878-3246. 25f

WANT ADS

Phono Records Christmas LP's Pop LP's Country & Western LP's Single Records. 118 N. Main St., Chelsea. Phone 479-6651. 27

WANT ADS

REFRIGERATION REPAIR MAN Excellent, permanent, full time opportunity. Start at \$3 per hour plus complete benefits, profit sharing and retirement. Immediate discount privileges. Apply in person. 181f

WANT ADS

FOR SALE — 1965 Corvair Monza. Low mileage. Martha Scott, Ph. 475-5778. 26

WANT ADS

FOR RENT—2-bedroom upstairs unfurnished apartment. Call after 5 p.m. GR 5-8521. 25

WANT ADS

Bill & Julie Tite 479-4209 17800 Waterloo at Bush Rd. Chelsea 25

WANT ADS

FOR RENT—2-bedroom house at North Lake. Phone HA 6-3541. 25

WANT ADS

RYDE WANTED from Chelsea to U.M. Hospital and back, Monday through Friday. Working hours, 8-5. Call 479-2972. 25

WANT ADS

Phono Records Christmas LP's Pop LP's Country & Western LP's Single Records. 118 N. Main St., Chelsea. Phone 479-6651. 27

WANT ADS

REFRIGERATION REPAIR MAN Excellent, permanent, full time opportunity. Start at \$3 per hour plus complete benefits, profit sharing and retirement. Immediate discount privileges. Apply in person. 181f

WANT ADS

FOR SALE — 1965 Corvair Monza. Low mileage. Martha Scott, Ph. 475-5778. 26

WANT ADS

FOR SALE — 1965 Corvair Monza. Low mileage. Martha Scott, Ph. 475-5778. 26

WANT ADS

Bill & Julie Tite 479-4209 17800 Waterloo at Bush Rd. Chelsea 25

WANT ADS

FOR RENT—2-bedroom house at North Lake. Phone HA 6-3541. 25

WANT ADS

RYDE WANTED from Chelsea to U.M. Hospital and back, Monday through Friday. Working hours, 8-5. Call 479-2972. 25

WANT ADS

Phono Records Christmas LP's Pop LP's Country & Western LP's Single Records. 118 N. Main St., Chelsea. Phone 479-6651. 27

WANT ADS

REFRIGERATION REPAIR MAN Excellent, permanent, full time opportunity. Start at \$3 per hour plus complete benefits, profit sharing and retirement. Immediate discount privileges. Apply in person. 181f

WANT ADS

FOR SALE — 1965 Corvair Monza. Low mileage. Martha Scott, Ph. 475-5778. 26

WANT ADS

FOR SALE — 1965 Corvair Monza. Low mileage. Martha Scott, Ph. 475-5778. 26

WANT ADS

Bill & Julie Tite 479-4209 17800 Waterloo at Bush Rd. Chelsea 25

WANT ADS

FOR RENT—2-bedroom house at North Lake. Phone HA 6-3541. 25

WANT ADS

RYDE WANTED from Chelsea to U.M. Hospital and back, Monday through Friday. Working hours, 8-5. Call 479-2972. 25

WANT ADS

Phono Records Christmas LP's Pop LP's Country & Western LP's Single Records. 118 N. Main St., Chelsea. Phone 479-6651. 27

WANT ADS

REFRIGERATION REPAIR MAN Excellent, permanent, full time opportunity. Start at \$3 per hour plus complete benefits, profit sharing and retirement. Immediate discount privileges. Apply in person. 181f

WANT ADS

FOR SALE — 1965 Corvair Monza. Low mileage. Martha Scott, Ph. 475-5778. 26

WANT ADS

FOR SALE — 1965 Corvair Monza. Low mileage. Martha Scott, Ph. 475-5778. 26

WANT ADS

Bill & Julie Tite 479-4209 17800 Waterloo at Bush Rd. Chelsea 25

WANT ADS

FOR RENT—2-bedroom house at North Lake. Phone HA 6-3541. 25

WANT ADS

RYDE WANTED from Chelsea to U.M. Hospital and back, Monday through Friday. Working hours, 8-5. Call 479-2972. 25

WANT ADS

Phono Records Christmas LP's Pop LP's Country & Western LP's Single Records. 118 N. Main St., Chelsea. Phone 479-6651. 27

WANT ADS

REFRIGERATION REPAIR MAN Excellent, permanent, full time opportunity. Start at \$3 per hour plus complete benefits, profit sharing and retirement. Immediate discount privileges. Apply in person. 181f

WANT ADS

FOR SALE — 1965 Corvair Monza. Low mileage. Martha Scott, Ph. 475-5778. 26

WANT ADS

FOR SALE — 1965 Corvair Monza. Low mileage. Martha Scott, Ph. 475-5778. 26

WANT ADS

Bill & Julie Tite 479-4209 17800 Waterloo at Bush Rd. Chelsea 25

WANT ADS

FOR RENT—2-bedroom house at North Lake. Phone HA 6-3541. 25

WANT ADS

RYDE WANTED from Chelsea to U.M. Hospital and back, Monday through Friday. Working hours, 8-5. Call 479-2972. 25

WANT ADS

Phono Records Christmas LP's Pop LP's Country & Western LP's Single Records. 118 N. Main St., Chelsea. Phone 479-6651. 27

WANT ADS

REFRIGERATION REPAIR MAN Excellent, permanent, full time opportunity. Start at \$3 per hour plus complete benefits, profit sharing and retirement. Immediate discount privileges. Apply in person. 181f

WANT ADS

FOR SALE — 1965 Corvair Monza. Low mileage. Martha Scott, Ph. 475-5778. 26

WANT ADS

FOR SALE — 1965 Corvair Monza. Low mileage. Martha Scott, Ph. 475-5778. 26

WANT ADS

Bill & Julie Tite 479-4209 17800 Waterloo at Bush Rd. Chelsea 25

WANT ADS

FOR RENT—2-bedroom house at North Lake. Phone HA 6-3541. 25

WANT ADS

RYDE WANTED from Chelsea to U.M. Hospital and back, Monday through Friday. Working hours, 8-5. Call 479-2972. 25

WANT ADS

Phono Records Christmas LP's Pop LP's Country & Western LP's Single Records. 118 N. Main St., Chelsea. Phone 479-6651. 27

WANT ADS

REFRIGERATION REPAIR MAN Excellent, permanent, full time opportunity. Start at \$3 per hour plus complete benefits, profit sharing and retirement. Immediate discount privileges. Apply in person. 181f

WANT ADS

FOR SALE — 1965 Corvair Monza. Low mileage. Martha Scott, Ph. 475-5778. 26

WANT ADS

FOR SALE — 1965 Corvair Monza. Low mileage. Martha Scott, Ph. 475-5778. 26

WANT ADS

Bill & Julie Tite 479-4209 17800 Waterloo at Bush Rd. Chelsea 25

WANT ADS

FOR RENT—2-bedroom house at North Lake. Phone HA 6-3541. 25

WANT ADS

RYDE WANTED from Chelsea to U.M. Hospital and back, Monday through Friday. Working hours, 8-5. Call 479-2972. 25

WANT ADS

Phono Records Christmas LP's Pop LP's Country & Western LP's Single Records. 118 N. Main St., Chelsea. Phone 479-6651. 27

WANT ADS

REFRIGERATION REPAIR MAN Excellent, permanent, full time opportunity. Start at \$3 per hour plus complete benefits, profit sharing and retirement. Immediate discount privileges. Apply in person. 181f

WANT ADS

FOR SALE — 1965 Corvair Monza. Low mileage. Martha Scott, Ph. 475-5778. 26

Friendliness We serve with the devotion of a true friend. Staffan Funeral Home "Funeral Directors for Four Generations" 124 PARK STREET PHONE GR 5-4417

MOVE-IN BEFORE CHRISTMAS 4-BEDROOM new brick ranch and aluminum tri-level, located south of Old US-12 west of Wilkinson. NEW LISTING—270-acre farm with beef feeding set-up. NEW LISTING—In Chelsea, 3-bed, room house near South Elementary school. IN LIMA TOWNSHIP, with general business zoning, acre with buildings, brick house and garage. IN SCIO TOWNSHIP, 1 acre with buildings, house and garage. INCOME PROPERTY in Manchester. Call for more information and appointment to see these fine listings. Eibler, Frisinger & St. Amour Co. Chelsea - Ann Arbor Office Phones: Chelsea 475-8881 Ann Arbor 685-8688 Eve, George P. Frisinger, 479-4181 Herman Koehn, 479-7258 241f

- FOR SALE - CROOKED LAKE—2-acre lot, approximately 250-foot lake frontage. 2-bedroom modern brick home, fireplace, full basement, oil furnace, 2-car garage, 2-bedroom frame guest house, 5 boats. Immediate possession. 340-ACRE FARM, modern, 4-bedroom brick home, 2 large barns. 3 3/4 ACRE LOT—Good building location, \$2,200. SOLD OUT OF CHELSEA HOMES Have Buyers Waiting! List your property with Miller—fast, efficient service. R. D. MILLER REAL ESTATE BROKER EVELYN ABDON, Phone 475-7551 (after 6 p.m.) Office: 15775 Cavanaugh Lake Road Post Office Box 324 Chelsea, Michigan Phone: GR 9-5992

REAL ESTATE FOR SALE APARTMENT HOUSE—3 well-arranged, nicely decorated apartments. Gross income \$270.00 per month. Selling price: \$22,000. Phone me for details. INDUSTRIAL SITE—7 1/2 acres with 745 ft. of railroad frontage. Village water, gas and electric on premises. High and dry. Good drainage. BUILDING LOTS (Buy now—build next spring) OLD US-12, WEST—1.7 acres, high and dry. 2 miles out. RIKER RD. — Near Interneer. Nearly 2 acres at \$3,500. NORTH TERRITORIAL RD. — 2 acres. Lots of maple trees. LAKE-FRONT—Approx. 2/3 acre in all, with frontage on North Lake. ALSO—15 acres of woods. CLARENCE WOOD BROKER 644 Flanders St. Phone 479-4803 281f

-SPECIALS- 14-OZ. PKG. GREENHOUSE Salad Tomatoes . . . . 29c FRESH, CRISP Head Lettuce . . . 2 for 39c CHIQUITA Bananas . . . . 2 lbs. 29c 6-OZ. CAN FLORIDA FROZEN Orange Juice . . . 7 for \$1.00 ECKRICH "ALL-BEEF" Franks . . . . 1-lb. pkg. 59c McDONALD'S FLAVOR SQUARE Ice Cream . . . 1/2 gal. 69c SCHNEIDER'S MEATS - GROCERIES 121 S. MAIN ST. PHONE GR 9-2411

From HISTORY'S SCRAPBOOK DATES AND EVENTS FROM YESTERYEARS
The Bill of Rights was ratified by the states, December 15, 1791. The first life insurance policy was issued, December 1792. The Boston Tea Party took place December 16, 1773. The first airplane flight took place at Kill Buck, N. C., December 17, 1903. The 13th Amendment (abolition of slavery) was declared December 18, 1865. Hitler assumed direct control of the Nazi army, December 30, 1934. Electric lights appeared on Broadway for the first time, December 20, 1890. The Pilgrims landed at Plymouth, December 21, 1620. Sherman captured Savannah, December 21, 1864.

Chelsea College Club Plans Holiday Session
Chelsea College club will again be held this year, after a lapse of a few years. The time and date of the event will be Wednesday, Dec. 27 at 1:15 p.m. in the Chelsea High school cafeteria. All college-bound Chelsea students, especially juniors and seniors, and Chelsea High school graduates presently enrolled in colleges, universities and other advanced studies are invited to attend. Each collegian may bring a visiting college friend along. College students are encouraged to wear their school colors, letters, blazers, etc., to the informal meeting. The College club's purpose is to present first-hand information about the various aspects of college life to the future college students. Several Board of Education members, teachers and counselors will be on hand to make introductions and initiate discussions between the present and potential college students.



GIRL SCOUTS
TROOP 58- Girl Scout Troop 58 met at the Methodist church Monday, Dec. 4. The troop opened its meeting with the Girl Scout Promise, after which the girls sang a song and played a relay race called 'Walking on Ice.' The members elected a new treasurer and assistant scribe. Before breaking up into patrols, they planned a Christmas party, which will be held Dec. 18. The girls are also expecting a guest from Ann Arbor to lead them in the singing of Christmas carols. After dividing into patrols to talk about future plans, the girls closed the meeting with taps. Cindy Harook, assistant scribe.

Rev. John Fall Named to Gerontology Board...
(Continued from page one) 1962, he completed work on a master's degree at Oberlin College in 'planning retirement housing.' He then became assistant administrator of the Chelsea Methodist Home for three years, and has been administrator of the Home for the past one and one-half years. The Michigan Society of Gerontology began 12 years ago at the University of Michigan out of an academic interest in the needs of the aging. It has since become a statewide organization for laymen as well as for those in medicine and related science fields. The society, which meets at irregular intervals in various towns having an interest in projects for the aged, is trying to work out a co-ordinated approach toward meeting the needs of Michigan's older citizens. The society's next annual convention will be held next fall in Flint. The board meets in Lansing. Freedom is a gift from the past, but it is not at all certain that it will be a legacy of the future unless we strive to preserve it. —Lloyd Frank Merrell.

'll put "wings" on your car
You'll think your car has sprouted wings, the way it responds after lining up with our new PURE gas. You'll like the way the pop, power and performance steps up when you fill up with PURE Gas and Oil. Our batteries will assure you quick starts, too!

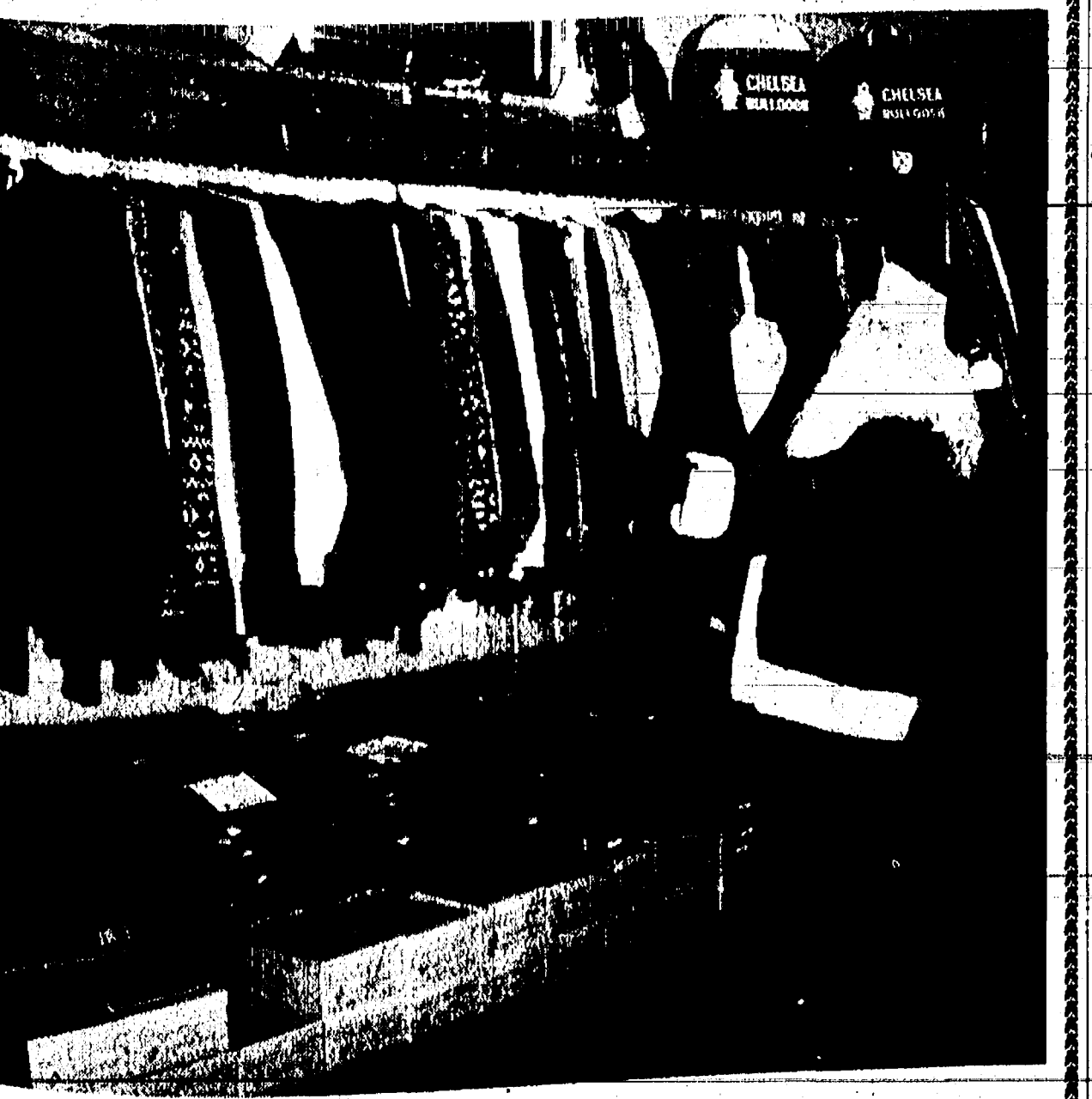
Home Economics Study Groups Calendar
Dec. 14—Northfield Study Group, Christmas dinner, Red Cross Center, 2729 Packard Rd., Ann Arbor.
Dec. 14—Geddes Study Group, 12:30 p.m., Huron Motor Inn, Ypsilanti.
Dec. 15—Freedom Ideal Homemakers, corner of Fletcher and Waters Rd., Chelsea. Mrs. Alton Gray and Mrs. Harold Eschbach, co-hostesses.
Dec. 16—Rogers Corners Study Group, home of Mrs. Ernest Wenk, 2833 Fletcher Rd., Chelsea.
Dec. 16—Erie-Les's Saline Township Hall, Saline. Mrs. Maxine Burkhardt and Mrs. Milly Haeussler, co-hostesses.
Dec. 18—Lodi Plains, 12:30 p.m., home of Mrs. Russell Widmayer, 6105 Saline-Ann Arbor Rd., Saline.
Dec. 19—East Suburban Study Group, home of Mrs. L. J. Hopkins, 2831 Belwood, Ann Arbor.
Dec. 19—York Study Group, home of Mrs. Alberta Cain, 822 N. Marvyn St., Milan.
Dec. 19—Lodi Study Group, Christmas dinner, Mrs. Irene Groob, hostess, 5361 Maple Rd., Ann Arbor.
Dec. 19—Fosdick Homemakers, Christmas party, Saline Township Hall, Saline.

Clinton Upholstering & Furniture Co.
We reupholster your old furniture like new.
FREE ESTIMATE - PICK-UP AND DELIVERY
NEW FURNITURE MADE TO ORDER
Financing Available
36 mo. to pay - No money down - No payment for 45 days
SPECIAL
Orthopedic-Type Mattress & Box Spring Set
Regular \$99.95. \$79.95
Special—Now \$79.95
124 W. Michigan Ave., Clinton Ph. 456-4850

IN THE OPEN
By Lee Smits
There are books on how to hunt white-tail deer. How to track, how to stalk. Little has been written on the art of sitting still for hours on end, which is the basic technique of deer hunting in Michigan. To be included in the successful percentage of deer hunters requires a combination of temperament, know-how and luck, with the accent on luck. An old-timer, with an almost perfect record of a buck a year, was subjected to a series of interviews which yielded pointers of value to any deer hunter. First, an obvious place of advice, yet overlooked by many, is your BIBLE. EVERY YEAR find a reputation list, range, or a gravel pit or a steep-hill and see precisely where your rifle throws lead, using the load you intend to hunt with. Experts favor a rifle sighted a trifle high at 100 yards. At close range they pick a point of aim at the brisket hairline. However, an excited hunter is prone to overshoot so the average hunter might do well simply to make sure that his sights are properly lined up to put the bullet at point of aim at 100 yards or less; the range at which most Michigan deer are killed. A successful deer hunter is hunting every minute he is in the woods, hunting as he leaves camp before daybreak, hunting on his way back after sunset, rifle ready to leap to shoulder, resisting always the temptation to start concentrating after he arrives at a location—he thinks is especially good. Sitting on a runway, watchfully waiting, calls for a certain amount of stolid patience. Sitting still is cold work. Instead of wearing numerous layers of clothing enroute to a stand and working up a sweat, a sagacious sinner will carry jacket, insulated pants, a cushion, even a blanket to insure comfort during the vigil. Blanket over legs, lantern under blanket is a big help. Some old-timers insist that a small warming fire does not alarm deer, although attention given the fire might well interrupt the continuous alert required of a deer sinner. Eating lunch on a runway is another way to let the big one get by. A sack of raisins or hard candy will curb hunger and pass time. A smoker can convince himself that if he is giving due heed to the direc-

tion of the wind, smoke will not spook a buck. Our old-timer is mighty particular about the treatment given a deer that has become venison. He is disdainful—for no good reason—of the hefty hunting knife in a belt sheath. Says he never saw a native hunter totting anything except a sound jackknife, with an extra sharp blade reserved for dressing game. Hearing heat and liver to camp, strung on a forked stick, is an ancient hunter's ritual. A deer box in full bladder but attached to the liver is a dark tag—old woodsmen called it an "cut"—that has to be cut off. Now and then you will see a north woods veteran facilitate the bleeding out of a deer by putting a bullet through the rib cage. A fastidious hunter carries paper towels or yards of muslin for mopping out the interior of a dressed deer, never using water. Comes a streak of warm weather, a wrap-around of muslin protects against unreasonable flies. Nothing infuriates an old-timer more than seeing a deer in transport, draped over the hood of a car. On top of car, yes, with muslin or plastic for a dust guard. Our old-timer is not in too great a rush to get his deer meat into deep freeze. Proper aging of venison, at temperatures just above freezing, brings out the true flavor and helps to tenderize a wiry buck. Mr. Smits' column is presented through the courtesy of the Michigan Consolidated Gas Co.

SANTA Has Spotted the New JANTZEN Sweater Rack
Over 100 choices in Cardigans, V-Necks, Hi-Crews, Mock, Turtle and Sleeveless Styles.
\$8.00 to \$22.00
Andy Williams Models at \$25.00



Strieter's Christmas Store for Men

NORTH FRANCISCO
Mr. and Mrs. Dillman Wahl spent Saturday evening with her daughter, Mrs. Leonard Loveland. Mr. and Mrs. Dale Loveland of Grass Lake visited Mrs. Loveland Tuesday evening. Harley Loveland was a Friday morning caller at Mrs. Loveland's home. Mr. and Mrs. Clifford Wolfe, Milton Bohne, and Odema Mueckel visited Mr. and Mrs. Nelson Peterson Friday evening. MODERN
Some three-fourths of all drugs, antibiotics and vaccines in hospital use today were unknown 10 years ago.

YES WE ARE MAKING LONG-TERM FARM REAL ESTATE LOANS
SEE US
Federal Land Bank Association
Ph. 665-6189 2221 Jackson Ave. Ann Arbor, Mich. 48106 P. O. Box 1006

TROOP 82- Girl Scout Troop 82 met Thursday, Dec. 7. Joanne Popovich held the flag for the opening ceremonies. The treasurer then collected dues. The members planned a Christmas party. Two Cadettes, Jane Mann and Lisa Peppers from Troop 98, talked to the girls. The troop will go to the Jaycee Hall Saturday, Dec. 9 to address envelopes. Michelle McClear worked on a badge. Refreshments were furnished by Susan Allen, Janet Spaur and Cathy Pierce. The troop patrol leader held a court of honor. Joanne Popovich, scribe.

TROOP 58- Girl Scout Troop 58 met Tuesday, Dec. 12. The girls started the meeting by singing "When- ever You Make a Promise" and by playing the game, "Shoes Off." Paulina Robbins and Teri MacDonald won the prizes of sour bites. Dues were collected, after which the girls discussed plans for their Christmas party to be held Monday, Dec. 18. Members closed the meeting by singing taps and reciting the Girl Scout Promise. Debbie Kelemen, scribe.

TROOP 98- Girl Scout Troop 98 met Tuesday, Dec. 12 at the Southside with 16 members present. Each member supplied one or more styrofoam balls to make decorations for the Post Office tree. The troop will go to Lynn Jacob's house Monday, Dec. 18 make popcorn balls for Christmas baskets. Mary K. Slocum and Janet Green, scribes.

WCC Students Collecting Canned Food for Needy
Tomorrow, Friday, Dec. 16, is the final day for donations to the canned food drive being sponsored by the Student Senate of Washtenaw Community College, to aid needy families in Washtenaw county. Truse Gordonier, Dexter representative, may be called at 420-3880, by those wishing to donate, or the goods may be delivered to her home, 7910 Fourth St. The trouble with performers is that two of them so rarely agree.

HELLER ELECTRIC
Licensed Electrical Contractors
ALL TYPES OF WIRING
(NB job too big or too small)
DAY OR NIGHT
CALL GR 9-3816
20640 Sager Rd., Chelsea

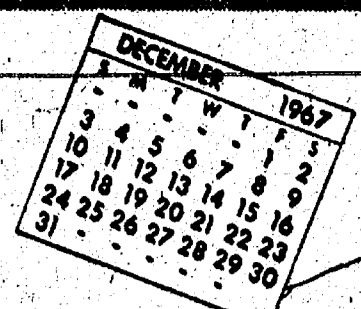
Refresh with MILK
MILK is good for both young and old
Every member of the family benefits from pure, delicious milk's health- and energy-boosting food values. It's a grand taste-treat, too... good any time, day or night.
WEINBERG DAIRY
Old US-12 Phone GR 5-5771

TODAY'S THOUGHT
By LOUIS BURGHARDT
Pre-Christmas thoughts... A time for gay decorations; for ivy, mistletoe, candies, flowers, simulated snow, lights both dim and bright. A time for presents, pretties, games and goodies. A time when Salvation Army people ring bells and humbly appeal for gifts to help the needy. A time for giving gifts. A time when not only neighborhood merchants, but whole communities engage in competitive maneuvers to clang cash registers. A time for parties. A time to celebrate with a Christmas drink. A time for family reunion. A time for cheerful faces and kind hearts. A time for antagonistic minds and moods to mellow. A time to gladden the eyes and hearts, especially children's. Depending on one's view, these are only a few of the pleasures or unpleasanties of Christmas. Many others could be mentioned. With it all, let us be thankful there are many people who celebrate Christmas for what it is. Let us be thankful they celebrate the Silent Night reverently. Let us be thankful the crystal Star of Bethlehem speaks to us as it still glows in the sky, as it still outshines the romance of the moon and a host of other silent stars. Above all, let us be thankful we have the choice and the privileged right to join with those who are thankful. BURGHARDT, FUNERAL HOME, 214 East Middle St., Chelsea, Mich. Phone GR 5-4141.

SPECIALS
Brown Sugar . . . 5 lbs. 63c
FARMER PEET'S
Ringer Bologna . . . lb. 49c
18-OZ. JAR KRAFT
Grape Jelly . . . . . 25c
Crisco . . . . . 3-lb. can 75c
We have everything for your Christmas baking.
We have a complete assortment of bulk fancy nuts in the shell.
BULK HARD & FILLED CANDIES
French Cremes & Chocolate Drops
KUSTERER'S
FOOD MARKET
DIAL GR 9-3331 WE DELIVER

BUYING A HOUSE?
Ask about our low-cost Mortgage Financing plan.
EACH DEPOSITOR NOW INSURED for a Maximum of \$15,000 with the Federal Deposit Insurance Corp.
CHELSEA STATE BANK
Member Federal Reserve System Member Federal Deposit Insurance Corp.
Member Federal Reserve System Member Federal Deposit Insurance Corp.

# Community Calendar



**Chelsea Community Farm Bureau** pot-luck supper, Thursday, Dec. 14 at 7:15 p.m. at the home of Mr. and Mrs. Walter Zeeb, 7014 Lincane Rd., with Mr. and Mrs. Roy Kalmbach, co-hosts.

**WRC** Monday, Dec. 18 at 7:30 p.m. at the home of Mrs. Watson Hart. Dessert-luncheon election of officers and exchange of gifts. Mrs. Harold Knott, co-hostess.

**Chelsea Suburbanettes** Christmas party and dinner meeting tonight at 7, at home of Mrs. Bud Haukeid. Bring dish to pass, a Caro gift, a Christmas gift, and a cookie for cookie exchange.

**Trailblazer Riding Club** Christmas party, Sunday, Dec. 17 at 2 p.m. in the F. & M. Restaurant, Chelsea. Dinner at 2 p.m., sharp, followed by short business meeting, during which awards and trophies will be given to members. Attendance by membership and special invitation only.

**Chelsea Camera Club** Tuesday, Dec. 19, at 7:30 p.m. in the K. of C. hall. Election of officers. Program: "How To Take and Narrate Travel Films." Refreshments. Guests welcome.

**Chelsea Coin Club**, Friday, Dec. 15, at 7:30 p.m. at the K. of C. Hall. Auction and trade session. Coins to buy. Adrian club will be guest. Refreshments served. Everyone welcome.

**Parents Without Partners** dinner-dance, Chelsea Square Center Center at 3012 Williamsburg Rd., Ann Arbor, Saturday, Dec. 16, cocktails at 6 p.m., dinner at 7 p.m. Single parents and guests welcome.

**Esther Chapter of Congregation** al church, Thursday, Dec. 14 at 8 p.m., home of Mrs. Laurayne White, Harrison St.

**Agricultural Entrepreneurs** Farm Bureau Group Christmas party, Dec. 16, Lima town-ship hall. Pot-luck at 7 p.m. Bring own children's gift for Santa's bag and \$1 exchange gift for men and women.

**Limancers** at the home of Mrs. M. W. McClure, Thursday, Dec. 14 at 12:00 p.m. Pot-luck dinner.

**Rogers-Corners-Extension Study Group** Christmas party, Saturday, Dec. 16, 8 p.m., at the home of Mrs. Ernest Wenk.

**Young Homemakers, Extension Study Group** family Christmas dinner, Saturday, Dec. 16 at 7 p.m. at the home of Mrs. Ronald Satterthwaite.

**Americans United for Separation of Church and State** will present speaker Franklin C. Salisbury, its general counsel, Dec. 15, 7:30 p.m., Zion Lutheran church, 1501 W. Liberty St., Ann Arbor; and Dec. 16, 3:30 p.m., Seventh-Day Adventist church, 2786 Packard Rd. His topics will be "Religion and the Courts" and "The Gathering Storm in Church-State Relations."

**Sylvan Neighbors**, Christmas party, at the home of Mrs. Albert Schweinfurth, 1425 Notten Rd., Thursday, Dec. 14, 2 p.m. Members note change of date.

**Herbert J. McKune Post No. 31** annual Christmas turkey dinner party for Legion and Auxiliary members and their families, Saturday, Dec. 16 at the Legion Home. Bring table service, dish to pass, and milk for your children; also bring gift tagged for your children.

**Jerusalem Farm Bureau** at the home of Mr. and Mrs. David Woirgang, Thursday, Dec. 14 at 8:30 p.m. Bring sandwiches and dessert for refreshments, and gifts for exchange.

**Chelsea Rebekah Lodge No. 130** Family Christmas Night, Thursday, Dec. 14 at 6 p.m., Rebekah Hall. Pot-luck supper. Meat, rolls and beverages furnished, program provided for all present.

**Older Adult Group of the Methodist church**, social center, Saturday, Dec. 16 at 12:30 p.m. for pot-luck dinner. Bring own service and dish to pass plus 50-cent grab-bag gift.

**Dec. 9**, the American Legion Auxiliary, will have a bake sale at Hilltop Plumbing, 201 S. Main St.

**COPE (Take Off Pounds Sent**



**GIRL SCOUTS AID MARCH OF DIMES:** Members of Girl Scout Troops 47 and 62 addressed and stuffed envelopes Saturday to be mailed to Chelsea residents for the 1968 March of Dimes campaign. Some of the busy helpers, under the direction of the Jaycee Auxiliary, are shown above working on the mailing project. They are, seated, from left, Treva Huston, Lynette Villemure, Bridgette Grohner, Duwana Villemure, Cindy Frisbie, Karen Romine; second row, from left, Teresa Carpenter, Gall Haas, Pam Greenleaf, Susie Palmer, Tammy Greenleaf, Janet Spear; back row, left to right, Jill Dunlap; Jaycee Auxiliary chairman of the mailing project; Mrs. Carl (Gloria) Carpenter, Girl Scout Troop 47 leader; Paula Haas, Janet Carpenter, and Mrs. Ken (Dorlene) Norris, Chelsea chairman of the March of Dimes. Additional members of Troop 62 who had finished their work and left before the photo was taken include Pam Boyer, Joanne Popovich, Linda Hafner, Denise Smith, Glenn Graham; and Mrs. Charles Popovich, leader of Troop 62.

sibly meetings are held every Wednesday at 12:00 noon at 902 McKinley, Chelsea. Women or girls interested in joining this club may call GR 9-8006 or HA 6-4554.

**American Legion and Auxiliary** hospital equipment available by contacting either Eugene Martin, 475-5867 after 4 p.m. or Mrs. Duane Hall, 475-8130 after 5:00 p.m.

**Sewing** every Tuesday at Korner House. Sewers needed; also, sheet, blanket, cards Thursday afternoon.

**Inquiries regarding the Chelsea** blood bank may be directed to Harold Jones of Central Fibre Products in the event that Mrs. Dudley Holmes is unavailable.

**RELIEVE CLUTTER**  
One way to relieve household clutter is to throw away or give away articles you no longer use. One good guide to help you decide which items to discard is if you haven't used an item within the last one or two years; out it goes.

**Frosh Cagers Defeat Dexter, Manchester**  
The Chelsea ninth grade basketball team defeated Dexter, 48 to 40, in its opening game Thursday, Dec. 7 in the Chelsea High school gymnasium.

Chelsea led by eight points at half-time, but Dexter started to close the score. With four minutes to go in the fourth quarter, Dexter tied the score, 30 to 36. Both teams then missed scoring opportunities until Jack McClear made a basket with less than three minutes to go. Chelsea added two more baskets and then hung on to win.

Scoring was well balanced among the five starters. Larry Gorton scored 11 points; Jack McClear, 10 points; Howie Treado, eight points; Jim Hercules, six points; and Don Bower, four points. Tom Harmon made the other three points. Although the game was played rather poorly, Coach Richard Bareis pointed out the fine over-all performance by Jack McClear.

Other members of the freshman squad are George Cameron, Jim Wencil; John Bennett; Jeff Pajsons; and Steve Lewis.

The Chelsea freshman basketball team defeated Manchester by a score of 46-30 Monday night. Chelsea started slowly and was trailing, 16-14, at half-time. However, the frosh warmed up in the second half, outscoring Manchester, 14-10, during the third quarter and 18-10 in the fourth quarter, winning the game by seven points.

Chelsea's leading scorer for the game was Howie Treado with 18 points, of which 17 were made in the second half. Jim Hercules was next with 10 points, followed by Jack McClear with 9 points.

Coach Bareis praised the fine defensive efforts of Larry Gorton, Bob Salyer and George Cameron. The Chelsea freshmen will face Dundee at home tonight at 8:30.

The term "waterlight" has been coined to describe a home with an adequate amount of water-using equipment. There are over 50 ways that water can be used in and about the home.

A Standard Want-Ad Will Sell Your Unused Items.

**Jaycees Entertain At Wives' Night Event**  
Chelsea Jaycees held their annual Wives' Night Tuesday, Dec. 5 at St. Paul Lutheran church where a ham dinner was enjoyed by the 40 couples attending the event. Wives' Night offers the Jaycees a chance to thank their wives for giving them time off from their duties as husbands and fathers to fulfill the obligations of the Chelsea Jaycees.

A short-business meeting was followed by a program on Africa. The speaker was Dr. Swan, a professor from Albion College, who gave an interesting talk on the anthropology of the African people and their relation to the rest of the world.

Chairmen for Wives' Night were LeRoy Rappette and Chuck Matoff.

**Wrestlers Win...**  
(Continued from page one)  
man for the entire six minutes to gain a 7-2 victory.

Hwt.-Jim Boylan, who played a key role in last year's victory over Michigan Center, did just as well this year, as he pinned his man early in the second period to end the meet and hand Chelsea its first victory of the new season.

In the junior varsity meet, Michigan Center came out the victor, outscoring the little Bulldogs, 28-18. Many of the junior varsity wrestlers were competing for the first time and are looking forward to improving quickly. Tom Tibb, Paul Maurer, Bill Lounsbury, Ted O'Neil, Dennis Morgan, Bob Koenigter, Dale Robbins, Tim Orbring, Dave Watson, and Chuck Budreau competed for the JV's. Lounsbury, Morgan, Orbring and Budreau emerged with victories.

Tonight at 8 p.m. the Chelsea varsity meets Dundee in the Chelsea gym. The Vikings will be out to avenge the 58-0 defeat they were given by the Chelsea crew last year. This will be the first Southeastern-conference meet for the Bulldogs.

One of the best ways to keep cooking grease and fumes from soiling kitchen walls is to install a hood and fan over the range. The hood should be deep enough to cover most of the cooking surface. Usually a space 26 to 30 inches above the cooking surface is suggested for the most effective removal of odors.

**Police Report Break-in, Three Arrests**  
One or more thieves broke into Chelsea Lanes early Friday morning, Dec. 8. They had apparently opened a window from the inside while the alley was open and returned later to enter the window, since the burglar alarms on the doors didn't go off. The culprits pried open seven vending machines, collecting approximately \$200 in change. Nothing was taken from the bowling alley itself, and damage was confined to the machines. No suspects have yet been found.

Arrested for drunk and disorderly charges last week were Elwood Lovely of 519 Lane St. and Ernest Carpenter of Jackson. Donald Coulter of Royal Oak, formerly of Chelsea, was arrested for a traffic warrant issued by Justice C. A. Rogers. Coulter received a traffic ticket in Chelsea, Sept. 10 and has since failed to appear in court. These three arrests bring the total number of arrests to nine for the first nine days of December.

**Chelsea Man Elected to Ann Arbor VFW Post**  
Gary Spear, son of Mr. and Mrs. Byford Spear of 123 Orchard St., has recently been elected junior vice-commander of Graf O'Hara Post No. 423, VFW, Ann Arbor. He will fill a vacancy for the 1967-68 term.

Spear, the first Vietnam veteran elected to office in Post No. 423, returned from Southeast Asia Sept. 19, 1966.

**Jiffy Mixers Win Opener Cassidy Lake**  
Chelsea Jiffy Mixers won an opening basketball game at Cassidy Lake Technical School last Friday night by a score of 80 to 75. The Cassidy team led only once in the game as they took an early lead at half time, 49 to 31. The Jiffy Mixers took the lead at half time, 49 to 31. Cassidy Lake's tall team is the Jiffy Mixers the victory.

Chelsea was scheduled to Cassidy Lake again Tuesday before opening league action in Ann Arbor in the Men's Division League, which starts Dec. 17.

Points scored by individuals were as follows: Odis Richardson, 6; Dallas Peltola, 6; Bob Taylor, 4; Don Lo 4; Bill Taylor, 2; Don Lo 10; Burt Cruise, 3; Jack Peltola, 2.

**Attends Health Conference**  
George R. Bergman, a counselor at Chelsea High school, was selected to attend the first annual Michigan Health Council Health Conference at Battle Creek, Dec. 4 and 5.

The objective of the conference was to bring together health specialists from the nation and school counselors to inform the counselors of career opportunities in the health field and the dire need for more specialized personnel in this field.

**Dana Corp., UAW Sign Agreement**  
Dana Corp. and the UAW reached an agreement Monday, Dec. 4 in principle on a new long-term bargaining agreement. The agreement covers more than 8,000 workers in 23 Dana-UAW units in 17 facilities. Details of the agreement were approved by company and union negotiators at a meeting in Detroit and the agreement was announced jointly by T. J. Raleigh, director of industrial relations of Dana, and Emil Mazey, secretary-treasurer of the UAW.

Both men stated that this was the finest agreement the company and the union have ever executed in the automotive parts industry.

Terms of the settlement will be made public after all the local units ratify the contract. The Chelsea unit, Local 437, ratified the contract Friday, Dec. 8. The agreement includes a substantial wage increase and also has provisions for a wide range of improved employee benefits covering production, skilled workers, and office and technical employees.

The new agreement covering workers in the parts industry will extend over a three-year period.

**Chelsea School District Cafeteria Menu**  
Monday, Dec. 18 - Stuffed chicken, slice of cheese, peas, pear salad, chocolate milk.  
Tuesday, Dec. 19 - Hot dog bun with trimmings, baked Jell-O cubes, Christmas cookies.  
Wednesday, Dec. 20 - Christmas dinner at school.  
Thursday, Dec. 21 - No school.  
Friday, Dec. 22 - No school.

## DECORATE YOUR HOME for an Exciting Christmas

White Decorative Canes	Reg. \$2.00 Value	\$1.29
Door and Table Decorations	One Group	89¢
TREE ORNAMENTS	Reg. \$1.50 Value	99¢
<b>TOYS and GIFTS</b>		
NAME BRAND WATCHES	Values to \$65.00	\$19.88
CHILDREN'S BOOKS	Large Selection. Reg. \$1.49	99¢
BILLFOLDS, Men's and Ladies'		\$2.98
CHIP & DIP SET		\$1.00
TOYS & MODELS	Huge Variety	Priced Right
DOLLS, one group		\$3.98
STUFFED ANIMALS	Large Variety	\$1.00 to \$2.79
Boxed Handkerchiefs	Men's and Ladies' Reg. \$1.00	2 boxes \$1.49
SQUIBB'S BROXIDENT		
ELECTRIC TOOTHBRUSH		\$14.95
<b>FANNY FARMER CHOCOLATES</b>		
<b>AMERICAN GREETING CARDS and ACCESSORIES</b>		
<b>BUDGET-WISE STORE</b>		
Chelsea's First Discount Store		
116 South Main Street		Phone GR 9-1611

## GIFT HIM RIGHT..

<b>PARIS BELTS</b> \$2.00 to \$5.00	<b>JARMAN LOAFERS</b> \$11.95 to \$14.95
<b>SUPERBA TIES</b> \$1.50 - \$2.50	<b>ENRO &amp; CAMPUS SPORT SHIRTS</b> \$4.95 to \$13.95
<b>SPORT COATS</b>	<b>SWEATERS</b> All wools and blends. \$6.95 to \$14.95
<b>SUITS, TOPCOATS</b> By Famous Makers.	<b>ENRO PAJAMAS and ROBES</b> \$4.95 to \$12.95
<b>CHAMP HATS</b> \$6.95 to \$11.95 Gift Certificates Available	

**FOSTER'S MEN'S WEAR**

## ORIGINAL GIFTS From Your Lumber Yard

**DOOR MIRRORS**  
Always high on the "wanted" list, a good door mirror gives years of service and satisfaction. Packaged with clips.  
★ HI-FIDELITY, 1/4" PLATE

16" x 68"	\$14.95
18" x 68"	\$16.95
20" x 68"	\$18.95
24" x 68"	\$22.95
CRYSTAL, 3/16"	
18" x 68"	\$10.95

**Weather Vanes**  
Adds a touch of charm!  
Baked flat-black finish on solid cast aluminum. 24" high, 8" arrow. Fits any roof.  
★ COUNTRY DOCTOR  
★ HORSE  
★ ROOSTER  
★ ANCHOR  
★ SAILBOAT  
\$10.98

**Presto Logs**  
Clean, long-burning, easy starting firelogs.

**Multi-Color** . . . 5 for \$1.55  
**Regular** . . . 6 for \$1.65  
Take home a case or two for the holidays!

**BASKETBALL BACKBOARDS and GOALS**

Regulation shape, pre-primed Backboards \$6.75  
Heavy-Duty Goal, with net, \$3.37  
Also, roof and gable-end brackets for mounting goals.

**Medicine Cabinets**  
WALL-HUNG TYPE - EZY INSTALL  
SWING DOOR, from \$3.95  
SLIDING DOOR, from \$23.45

**STEPLADDERS**  
Don't invite trouble with a worn-out ladder.  
★ BULLSEYE QUALITY WOOD

3-ft.	\$3.75
4-ft.	\$4.95
5-ft.	\$6.20
6-ft.	\$7.45
8-ft.	\$11.95

ALL PRICES SHOWN ARE CASH-N-CARRY

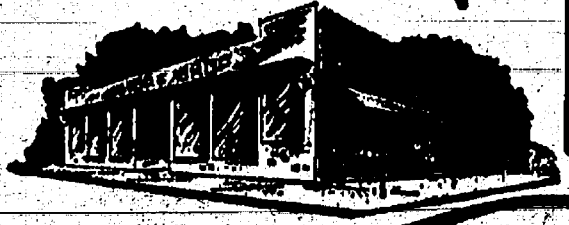
# CHELSEA LUMBER CO.

DIAL GR 5-3391

# THE SUPERMARKET THAT'S JUST A LITTLE BIT BETTER

# Stop & Shop

14901 Old U.S.-12  
Corner at M-52  
Chelsea



## THE KNOW HOW OF INTELLIGENT MEAT BUYING IS REALLY THE 'KNOW WHERE'

Our customers have learned to depend on the outstanding quality of Stop & Shop meats — unflinching satisfaction with every cut they purchase. The finest quality, together with the experienced expertise of our meat cutting experts, makes an unbeatable combination!

Prices Effective Wednesday, December 13 through Tuesday, December 19, 1967

# Chuck Roast <sup>Blade Cut</sup> 49¢ <sup>Lb.</sup>



- "Triple R Farms" U.S.D.A. Choice  
**Chuck Roast** . . . . . Center Cut **59¢ lb.**  
Lean, Tender, Boneless and Diced
- Stewing Beef** . . . . . **89¢ lb.**  
Stop & Shop's Fresh, Lean, All Beef
- Hamburger** . . . . . 3-Lb. Units or More **53¢ lb.**  
Fresh, Lean, Boston Butt
- Pork Roast** . . . . . **49¢ lb.**  
Lean, Meaty, Tender
- Pork Steaks** . . . . . **59¢ lb.**  
Stop & Shop's Home Made
- Pork Sausage** . . . . . **49¢ lb.**

- "Triple R Farms" Mich. Grade 1  
**Skinless Wieners** . . . . . **49¢ lb.**
- "Triple R Farms" Mich. Grade 1  
**Ring Bologna** . . . . . Plain or Garlic **53¢ lb.**
- Spencer's Hickory Smoked  
**Sliced Bacon** . . . . . 1-Lb. Layer **59¢**

Pure Vegetable Shortening  
**CRISCO** . . . . . 3 Lb. Can **66¢**

Pillsbury Enriched  
**FLOUR** With Coupon Below . . . . . 5 Lb. Bag **38¢**

Pioneer Fine Granulated  
**SUGAR** . . . . . 5 Lb. Bag **48¢**

Tips from the STOP & SHOP CHEF  
Questions & Answers  
Make Your Christmas Feast The Best Ever!  
Order Your "Triple R Farms" Fresh Dressed Turkey Today!  
We Can Guarantee Complete Satisfaction and Do It Unconditionally.

- McDonald's Country Fresh Grade "A"  
**Extra Large Eggs** All White Doz. in Ctn. **39¢**
- Royal Scot **Margarine** . . . . . 1-Lb. Print **13¢**
- Aunt Jane's Sweet Stix **Pickles** . . . . . 1-Lb. Jar **33¢**
- Stop & Shop's Enriched, Sliced **White Bread** . . . . . 4 1-Lb., 4-oz. Loaves **89¢**
- Farmer's 100% Pure **Horseradish** . . . . . 8 1/2-oz. Jar **29¢**

McDonald's Delicious  
**HOLIDAY CHEER**  
Half Gallon **49¢**  
Has all the flavor of Egg Nog with 4% less calories

- French Onion, Blue Tang, Garlic  
**Dean's Chip Dip** 8-oz. Your Carton Choice **19¢**
- Hy Ration **Dog Food** . . . . . 15 1/2-oz. Case of 12 Cans **99¢**
- Disposable Diapers  
**Flush-A-Byes** 12 Ct. Pkg. **59¢** 24 Ct. Pkg. **108¢**
- Domino Light, Dark Brown or **10X Sugar** . . . . . 1-Lb. Pkg. **15¢**
- Fabric Softener  
**Sta-Puf** 7¢ Off Label . . . . . 1-Qt. Plastic **29¢**

- Contadina Whole, Peeled **TOMATOES** . . . . . 1-Lb., 12-oz. Can **29¢**
- Contadina Whole, Peeled **TOMATOES** . . . . . 5 1 1/2-oz. Cans **100¢**
- Contadina **TOMATO PASTE** . . . . . 4 12-oz. Cans **100¢**

**Farm Fresh Produce**

- Fruit Bowl Quality **Bananas** . . . . . Lb. **10¢**
- California Fresh, Crisp **Pascal Celery** Large Stalk **19¢**

- Contadina **TOMATO PASTE** . . . . . 6-oz. Can **14¢**
- Contadina **MEAT LOAF MIX** . . . . . 4-oz. Pkg. **39¢**
- Contadina **TOMATO PUREE** . . . . . 2 10-oz. Cans **33¢**
- Nabisco Mister Salty **PRETZELS** . . . . . 10-oz. Box **39¢**
- Sunshine Krispy **CRACKERS** . . . . . 1-Lb. Box **29¢**
- Hakman's **CLUB CRACKERS** . . . . . 1-Lb. Box **29¢**
- Shur-Good - 4 Varieties **SNACK CRACKERS** . . . . . 8 1/2-oz. Box **29¢**

STOP & SHOP COUPON  
**SAVE 15¢ on PILLSBURY FLOUR**  
5-LB. BAG  
Only 38¢ With This Coupon

WE RESERVE THE RIGHT TO LIMIT QUANTITIES

**OPEN SUNDAY**  
10 a.m. - 6 p.m.  
All Sale Prices Effective Sundays

STORE HOURS:  
Monday thru Wednesday 9 a.m. to 6 p.m.  
Thursday and Friday 9 a.m. to 9 p.m.  
Saturday 8 a.m. to 9 p.m.  
Sunday 10 a.m. to 6 p.m.

### Junior High HONOR ROLL

DE 6—  
Bacon, Jane Belser, Neil  
Brauninger, Ron-  
ger, John Craig Coltrane, Todd  
Collins, Nancy Germain, Linda  
Hoy, Mark Heydlauff, Phyllis  
Hoy, Nancy Jennings, Dale  
Jennifer Lane, David  
Jon Lewis, Mary Line-  
on, Jeffrey Marshall, Michael  
Suzanne Osinski, Margery  
Ply, Marlene Raney, Pamela  
Robb, Darlene Robbins, Debra  
Trudi Sanderson, Kathryn  
Stephen Schanz, Gena  
Jeffrey Sprague (all  
Bran), Stephen, Bruce  
James Storey, Jenni-  
Tandy, Roben Terns, Daniel  
Robert Welt.

DE 7—  
Aldrich, Jeap-  
phani Elizabeth Belser,  
Bluess, David Brassow,  
Puse (all A), Jennell  
Donald Conklin, Gina  
Jeffrey Daniels, David  
Fairbrother, Laura  
Herr, Ted Hinderer, Tim  
Ralph Lee, John Mann,  
Norton, Maralyn Peppers,  
Pierson, Bonnie Powers,  
Salyer, Robert Schaeffer,  
Shaffer, Robert Schneider,  
Shadoan, Stephen Siebert,  
Skittenhelm, Mary Thomson,  
Tibb, William Tite, Janet  
Steven Worden, Ran-  
Young.

DE 8—  
Anderson (all A), Don-  
Ball, Debra Barker, Melvin  
Chandler, Marie Clouse,  
Eisele, Terri Elsemann,  
Freeman, Daniel Gaunt,  
Gru, Michael Hergert,  
Hopkins, Greg Howard,  
Jones, Kenneth Kusterer,  
Landwehr, Charles Lane,  
McGaw, Robert Mester,  
Nighaus, Iva Patrick, Keith  
David Powers, Laurel Prin-  
Cynthia Reynolds, Michael  
Karen Schafer, Kathryn  
Scher (all A), Janice Schenk,  
Schuelke, Rodney Service,  
Sprague, Martin Straub,  
Thomson, Norbert Weber,  
Weller, Robert Wuj-

### Paul Maroney named to National Legion Committee

Paul Maroney, 227 E. Middle  
has been appointed to the  
National Security Council of the  
American Legion. Maroney re-  
ceived notification of his appoint-  
ment in a letter from National  
Commander, William E. Gal-  
braith.  
His appointment was approved  
by the Legion's National Execu-  
tive Committee during its fall  
meeting at Indianapolis, Ind.  
Maroney was nominated by Na-  
tional Commander Galbraith for  
appointment upon the recom-  
mendation of Michigan officials  
in recognition of the services he  
rendered to his Post and the  
Legion of Michigan. His  
term expires at the close of the  
fall session of the National  
Executive Committee.

**TOOTH LOSS**  
Tooth disorders are the major  
cause of tooth loss in adults over  
35. A good oral hygiene program  
should consist of regular brush-  
ing after meals, daily care of  
gums, between-teeth with inter-  
dental stimulators and periodic  
dental checkups.

Lenny Green played for five  
years for league teams before join-  
ing the Tigers, his home town  
team, in 1967.



**Auto Insurance**  
Auto insurance is where  
Auto-Owners started. It's  
where Auto-Owners leads  
the way. For complete pro-  
tection tailored to you and  
your own requirements, see  
your A-O man. After all,  
Auto's his first name. Be  
in Auto-Owners "circle of  
protection."

**A. D. MAYER AGENCY, INC.**  
Your Protection Is Our Business!  
115 Park St. Chelsea  
Phone 479-5061

**Auto-Owners INSURANCE COMPANY**

Legal Notices

MORTGAGE FORFEITURE SALE... FEDERAL NATIONAL MORTGAGE ASSOCIATION...

MORTGAGE FORFEITURE SALE... FEDERAL NATIONAL MORTGAGE ASSOCIATION...

MORTGAGE FORFEITURE SALE... FEDERAL NATIONAL MORTGAGE ASSOCIATION...

MORTGAGE FORFEITURE SALE... FEDERAL NATIONAL MORTGAGE ASSOCIATION...

MORTGAGE FORFEITURE SALE... FEDERAL NATIONAL MORTGAGE ASSOCIATION...

MORTGAGE FORFEITURE SALE... FEDERAL NATIONAL MORTGAGE ASSOCIATION...

NOTICE OF FORFEITURE... MORTGAGE SALE... FEDERAL NATIONAL MORTGAGE ASSOCIATION...

NOTICE OF FORFEITURE... MORTGAGE SALE... FEDERAL NATIONAL MORTGAGE ASSOCIATION...

NOTICE OF FORFEITURE... MORTGAGE SALE... FEDERAL NATIONAL MORTGAGE ASSOCIATION...

NOTICE OF FORFEITURE... MORTGAGE SALE... FEDERAL NATIONAL MORTGAGE ASSOCIATION...

NOTICE OF FORFEITURE... MORTGAGE SALE... FEDERAL NATIONAL MORTGAGE ASSOCIATION...

NOTICE OF FORFEITURE... MORTGAGE SALE... FEDERAL NATIONAL MORTGAGE ASSOCIATION...

CHLSEA VILLAGE COUNCIL PROCEEDINGS... Regular Session, Nov. 21, 1967...

Trustee Miller reported that the trees ordered for 1967 have been planted. Several requests for trees were not filled...

A discussion was held regarding the possible need to update village ordinances...

A discussion was held regarding the proposed lower court in the City of Ann Arbor...

RESOLUTION OF THE CHELSEA VILLAGE COUNCIL REGARDING PROPOSED MICHIGAN LOWER COURT LEGISLATION...

MORTGAGE SALE... FEDERAL NATIONAL MORTGAGE ASSOCIATION...

MORTGAGE SALE... FEDERAL NATIONAL MORTGAGE ASSOCIATION...

MORTGAGE SALE... FEDERAL NATIONAL MORTGAGE ASSOCIATION...

NOTICE OF FORFEITURE... MORTGAGE SALE... FEDERAL NATIONAL MORTGAGE ASSOCIATION...

NOTICE OF FORFEITURE... MORTGAGE SALE... FEDERAL NATIONAL MORTGAGE ASSOCIATION...

NOTICE OF FORFEITURE... MORTGAGE SALE... FEDERAL NATIONAL MORTGAGE ASSOCIATION...

NOTICE OF FORFEITURE... MORTGAGE SALE... FEDERAL NATIONAL MORTGAGE ASSOCIATION...

NOTICE OF FORFEITURE... MORTGAGE SALE... FEDERAL NATIONAL MORTGAGE ASSOCIATION...

NOTICE OF FORFEITURE... MORTGAGE SALE... FEDERAL NATIONAL MORTGAGE ASSOCIATION...

NOTICE OF FORFEITURE... MORTGAGE SALE... FEDERAL NATIONAL MORTGAGE ASSOCIATION...

NOTICE OF FORFEITURE... MORTGAGE SALE... FEDERAL NATIONAL MORTGAGE ASSOCIATION...

NOTICE OF FORFEITURE... MORTGAGE SALE... FEDERAL NATIONAL MORTGAGE ASSOCIATION...

NOTICE OF FORFEITURE... MORTGAGE SALE... FEDERAL NATIONAL MORTGAGE ASSOCIATION...

NOTICE OF FORFEITURE... MORTGAGE SALE... FEDERAL NATIONAL MORTGAGE ASSOCIATION...

NOTICE OF FORFEITURE... MORTGAGE SALE... FEDERAL NATIONAL MORTGAGE ASSOCIATION...

NOTICE OF FORFEITURE... MORTGAGE SALE... FEDERAL NATIONAL MORTGAGE ASSOCIATION...

NOTICE OF FORFEITURE... MORTGAGE SALE... FEDERAL NATIONAL MORTGAGE ASSOCIATION...

NOTICE OF FORFEITURE... MORTGAGE SALE... FEDERAL NATIONAL MORTGAGE ASSOCIATION...

NOTICE OF FORFEITURE... MORTGAGE SALE... FEDERAL NATIONAL MORTGAGE ASSOCIATION...



Spacemen May Make Purr-fect Landings... OATS CAN TEACH astronauts some useful tricks...

FOUR AMERICAN universities—Harvard, Columbia, California at Berkeley and Princeton...

LASERS, which can bounce their high-powered beams off meat contact surfaces because it is highly resistant to corrosion...

SOFT DRINK CANS are playing a vital role in research related to missile and rocket systems...

MEAT MACHINERY producers are switching from riveted and galvanized products to welded stainless steel equipment...

Bids for the proposed installation were submitted from Dunigan Bros. Inc. and F. J. Siller Co. Inc.

A lengthy discussion was held regarding the proposed construction of a 10-inch sewer from Meyer Drive south to a lift station...

In addition to the contract price of \$46,683.00 the village has contracted for the purchase of the lift station...

Meeting adjourned. Approved: Dec. 5, 1967. Donald E. Baldwin, President. George Winkas, Clerk.

Meeting adjourned. Approved: Dec. 5, 1967. Donald E. Baldwin, President. George Winkas, Clerk.

Crossword puzzle grid with clues for Across and Down.

Continuation of crossword puzzle grid.

Continuation of crossword puzzle grid.

Continuation of crossword puzzle grid.

Continuation of crossword puzzle grid.

Continuation of crossword puzzle grid.

Continuation of crossword puzzle grid.

Continuation of crossword puzzle grid.

Continuation of crossword puzzle grid.

Continuation of crossword puzzle grid.

Continuation of crossword puzzle grid.

PUBLIC NOTICE: On-Street Parking Permits Will Be Rescinded Dec. 15. Effective Dec. 15, 1967, owners of all vehicles must arrange for off-street parking during the hours of 2 a.m. and 5 a.m.

THINK! Structural change of muscles, bones, nerves precedes changes of functions in the body! ALTERED function and — later tissue degeneration IS DISEASE! CHIROPRACTIC NORMALIZES STRUCTURE, CORRECTS THE CAUSE OF DISEASE. DR. GEORGE N. KOFFEMAN, CHIROPRACTIC PHYSICIAN.



### High School HONOR ROLL

**GRADE 9—**  
 Ade Allen, Pamela Arnett, Linda Ball, Susan Blass, Elsie Bristle, Jeffrey Bust (all A), George Clark, Tonya Clemons, Kim Cooper, John Dettling, Donita Eason, Martha Ewald, Mary Flinn, Mark Fuhrmann, Mary Kay Goren, Dorothy Gauss, Lawrence Goren (all A), Janice Guenther, Mary Hafner, Regina Hagen, J. Haselschwardt (all A), Howard Hercules, David Heydler, Sharon Heydlauff, Dennis Higgins, James Kalmbach, Jill Kamiller (all A), Laurel Lancaster, Patricia Laraway, Jane Miller, Jackie McClain, John McFar, Mary Lu McClellan, Betty Nutt, Pamela Farnell, Jeffrey Parsons, Norman Passow, Lisa Peters, Holly Powers, Michael Roberts, Dale Robbins, Nell Roberts, John Saehner, Robert Schaffer, Schmidt, Rebecca Smith, Owen Smith, Susan Stock, Deborah Stoker, Mary Tandy, John Taylor, Sherrille Terrell, Brad Tompkins, Howard Treado, Edwin Wade, Susan Warywoda, Carol Gayle Winans, James Wojcik, Patricia Young.

**GRADE 10—**  
 John Adams, Christine Alber, John Blecha, Floyd Boyce, Boylan, C. Buckingham, Barbara Purdy, David Bust, Victoria Collins, Timothy Colvia, Claudia Collins, Robert Dvorak, John Eber, Beverly Gobott, Patricia Grob, Kathryn Grob, Laverne Grob, Robert Hess, Jeanne Hinger, Louise Johnson, James Juarez, Diana King, Jill Lantis, Marg Lewis, Gail Machnik, Gail Nelson, Dan Chelson, Dennis Morris, Cynthia Nelson, Donald Norstrom, James Phinney, Quigley (all A), Diane Schneider, Doug Schoenberg, Brenda Seitz (all A), Shears, Richard Slane, Snyder, Retha Spees, Rita Sprague, Lynn Sutter, Suzanne Taylor, Steve Thompson, Thorton, Thomas Tiff, Ann West, Ruth West, Vickie Wilkerson, Fred Worden.

**GRADE 11—**  
 Mary Baizer, Barbara Bauer, Curtis Beiser, Cynthia Benjamin, Beverly Bohanna, Benjamin Bower, Bruce Burghardt, Faye Carpenter, Cathy Cavender, Brenda Collins, Stephen Dieckrich, Lynn Ferguson, Frinkie, Thomas Gardner, Michael Grau, Susan Guenther, Joseph Hildebrand, Joseph Hildebrand, Rodney Houle, John Kalmbach, Doreen Kuhl, Keith Kusterer, Karen Leach, John Lindauer, Carolyn Lyons, Richard Marshall, James McDermott, Connie Parker, Nancy Parson, Bonnie Parnell, Donald Parson, Mary Powers, Carl Raney, Sandy Sanderson, Diane Schenk, Michael Schmidt, Janice Schmeider, Mary Steele, Gregory Stephens, Thomas Thomson, Lynn Visser, Anne Wengren, Helen Wolanski, Donna Worreass.

**GRADE 12—**  
 Anetta Arnett, Kenneth Blass (all A), Del Bolanowski, Alan Brand, Diane Brand, Judith Brand, Elaine Bristle, Nancy Buckingham, John Dickson, Kathleen Dove, Sandra Eisele, Evelyn Estes, Lynce Falst, Linda Farkis, Joanne Fisher, Gail Foster, Kathy Fulk, Susan Grau, Michael Grob, Mike Henricks, Carol Hepburn, Shirley Howard (all A), Elzagan Hughes, Katherine Kreyer (all A), Sam Knick, Lynda Koch, Donald Oengeter, Deborah Kuhl, Gary Larson, John Lacey, Daniel May (all A), Patricia McGaw, Paul McGibney, Ronnie Morley, Mark Musolf, Lanny Patrick, Cheryl Peppers, Charlene Powers, Robert Powers, Jerry Quigley, Sheila Ritter, Judy Salyer (all A), James Schneider, Sandra Speers, Vincent Stahl, Janice Stephens, Joyce Stephens, Sarah Corey, Christine Taylor, Jean Walters, Carolyn Wenk, James Williams, Tom Wojelchowski, Raymond Worden.

**Even Students Pioneer Guatemala Program**  
 East Lansing—Seven Michigan State University students will spend this winter at their own expense working as assistant teachers at the American School Guatemala.  
 They will receive up to 15 hours class credit for their work in a pioneer program operated jointly by MSU's College of Education and the American School Guatemala City.  
 Both American and Guatemalan youngsters attend the school, which enrolls about 1,000 pupils kindergarten through 12th grade levels.

**MAUSOLEUMS \* MONUMENTS BRONZE TABLETS \* MARKERS**  
**BECKER MEMORIALS**  
 6033 Jackson Road ANN ARBOR, MICHIGAN



# ONE STOP SHOPPING

Famous Brand Toys — Holiday Gifts — Decorating Values

## Gambles Gift Wrap Buys

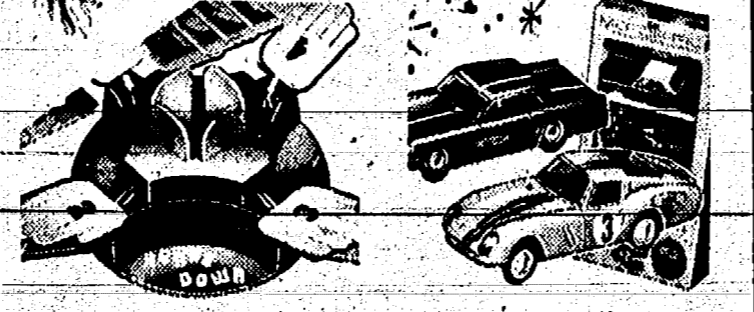
**GIFT WRAP 99¢**  
 An elegant assortment of fine quality gift wrap 50 feet, lovely jewel-tone colors. 23-5513

**REDI-TIED BOWS 58¢**  
 Fifteen gorgeous star bows to stick on gifts — no fuses or bother! Holiday colors. 23-5514

**TAGS & CARDS 58¢**  
 120 pretty holiday trimmed tags and cards with strings. Hurry in and save! 23-5515

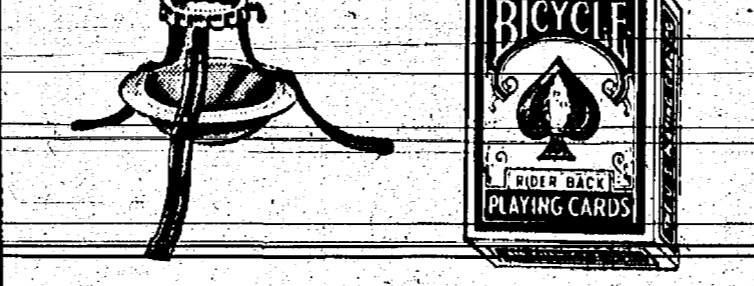
solve gift problems with a **GAMBLES GIFT CERTIFICATE**

## Santa's Specials!



**Ideal's Hands Down \$3.97**  
 Fascinating fun for young and old! Set includes "Slam-O-Matic" and playing cards.

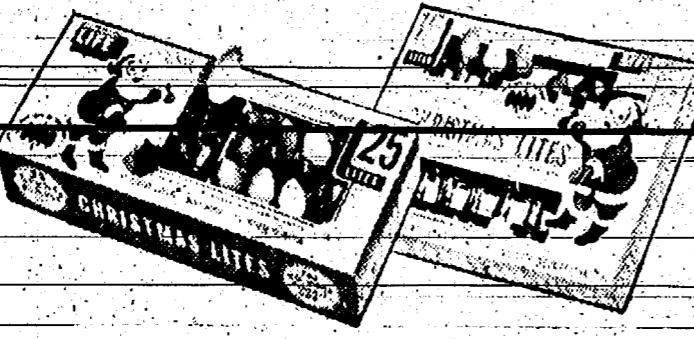
**Motorcicle Gift Cars \$2.98**  
 Start your fleet with a Chevy, Jaguar XKE, Cadillac or other Customized bodies. 23-5701



**TREE STAND 87¢**  
 Tree stand of sturdy steel in red and green. Holds trees with up to 3 1/2" trunks. 23-4744

**PLAYING CARDS 44¢**  
 Famous, high quality playing cards for all card games. Boxed deck, poker size. 23-4844

## HOLIDAY LIGHTING—INDOORS OR OUT!



**Outdoor Lite Set \$4.97**  
 Weatherproof, 25-light outdoor set has tempered steel clips, imported 120-volt lamps. New matching green wire and sockets! 23-5511

**Indoor Lite Set \$1.97**  
 Decorate your rooms with brilliant multiple indoor lights! 15-light set has independent lighting, is UL approved. Big value! 23-5502

**VIVID LIGHT SET \$1.97**  
 Bright, steady burning set with assorted colored reflectors for tree trimming! 23-5514

**TWINKLE LIGHT SET \$2.39**  
 20 two-color-twinkle lamps light up your home for Christmas! Many colors. 23-5521

**Extra-Lights C6—5 for 29¢**  
 Stock up now at this low price! 23-5524, 21, 41 C7 5/594 C9 5/824

## Midland 4-Transistor WALKIE-TALKIES

**LIFE \$14.95**  
 No license needed. Ready for instant use. Transmit and receive messages up to half-mile. Set of 2, with batteries.

## Midland 4-Transistor TAPE RECORDER

**\$12.95**  
 Light portable records, plays, rewinds. Equipped with interlock, 3" reel of tape, microphone, earphone, batteries. 43-4386

A pattern so elegant for so little!  
 lovely Plantation\* pattern in

**ONEIDA\* STAINLESS**  
 Carefree and beautiful... with a lovely finish that will resist tarnish and never require polishing. Perfectly proportioned in a rich design of unusual elegance.

**55-PIECE SERVICE FOR 8 \$19.95**

You get all these pieces:  
 16 teaspoons, 8 dinner forks, 8 dinner knives, 8 salad forks, 8 soup spoons, 8 soup spoons.  
 Including these **7 EXTRA SERVING PCS.**  
 1 butter knife, 1 cold meat fork, 1 gravy ladle, 1 sugar spoon, 1 plated de-vert server, and 2 serving spoons.  
 \*Registered trademark of Oneida Ltd.

## SUNBEAM DOMINION HAIR DRYER

**\$17.95**

## SUNBEAM Steam-Dry Iron

**\$16.95**  
 Steams longer—holds more water! New "Wash'n wear" settings for faster ironing.

## HAMILTON BEACH Portable Mixer

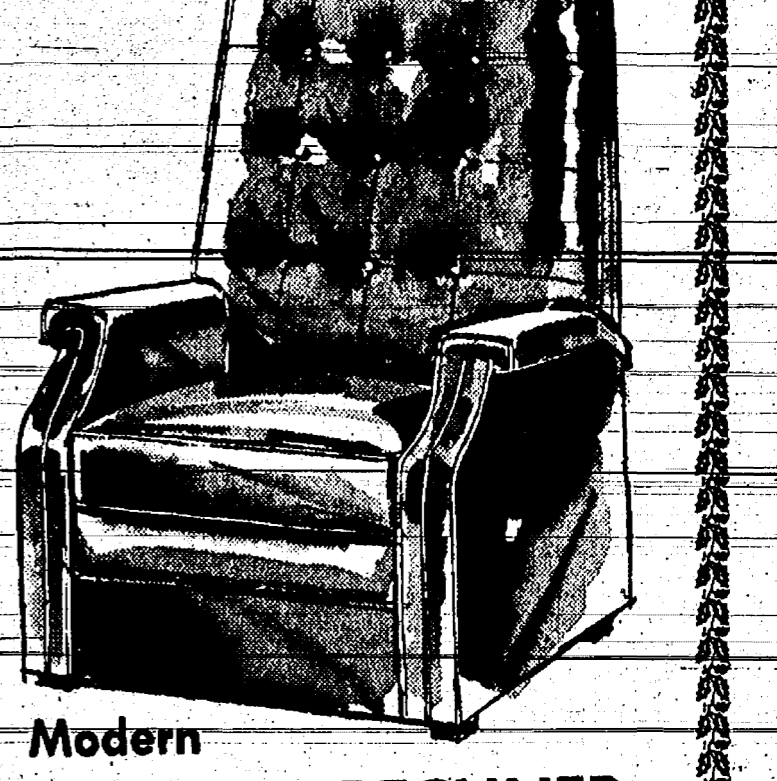
**REG. PRICE \$11.95 NOW \$9.88**  
 Lightweight, powerful 3 speeds, handy finger-tip controls. 2 colors.

# Home and Family GIFTS SPECIALLY SELECTED FOR VALUE!!

**4-Way Lighting POLE LAMP \$11.95**  
 Adjusts 7'10" to 8'4"  
 Rich polished brass pole with three white frosted glass reflectors. Convenient 4-way switch in stem.

**DESK GROUPING \$49.95**  
 Complete as Shown  
 Smartly styled desk and chair in walnut or lined oak finishes.

**it's all new Sunbeam**  
**COURIER "1" 1 1/2 h.p. Vacuum Cleaner \$44.95**  
 Reg. \$49.95  
**Courier "Cord-Real" 1 3/4 h. Vacuum Cleaner \$79.95**  
 Reg. \$89.95  
**Sunbeam Special Tank Ty Vacuum Cleaner \$29.88**



**Modern HI-BACK RECLINER \$69.95**  
 Luxuriously comfortable Stylefoam® padded, with upholstery of expanded vinyl that looks and feels like fine leather. Extra-high back gives greater reclining comfort. Modern tapered back, sleek trim accents.  
 No Money Down \$1.50 Per Week Payable Monthly  
 \*Our name for urethane foam.

**EUREKA "CORD-AWAY" VACUUM CLEANER \$54.95**

**Cordless-Portable—Tape as you go with this lightweight portable. Has two recording/playback speeds—Mike has switch for remote control. Fast forward and continuous tone controls. Mike, batteries, 3" reel of tape, empty reel, earphone and carrying case with shoulder strap included. \$39.95**

**"SWINGLINE" STYLING**  
**RCA VICTOR SOLID STATE PORTABLE STEREO PRICED FROM \$69.95**

MAUSOLEUMS \* MONUMENTS BRONZE TABLETS \* MARKERS BECKER MEMORIALS 6033 Jackson Road ANN ARBOR, MICHIGAN

# BOWLING NEWS

## Senior House League

Standings as of Dec. 11

W	L
Seitz's Tavern	35 21
Parish Cleaners	33 23
Carling's Beer	33 23
Schneider's Grocery	32 24
Spaulding Chevrolet	32 24
Chelsea Grindings	31 25
Sylvan Center	29 27
Wolverine Tavern	28 28
Dana No. 2	24 32
G. E. Boys	24 32
Universal Floor Co.	18 38 1/2
Dana No. 1	16 40

200 games and over: J. Harook, 240-212; W. Giffith, 201; G. Phillips, 212; J. Stoffer, 206; S. Policht, 223; E. Miller, 204; H. Burnett, 228-210; G. Lawrence, 200; R. Eder, 200-200; L. Salyer, 204.

600 series and over: J. Harook, 925; H. Burnett, 828.

500 series and over: W. Giffith, 529; D. Aten, 508; M. Poertner, 522; G. Phillips, 524; R. Knickerbocker, 561; N. Fahrner, 505; D. Singer, 501; G. Gaeth, 561; J. Stoffer, 580; C. White, 541; A. Peterson, 502; S. Policht, 570; S. Stane, 528; E. Miller, 553; A. Clemens, 538; G. Burnett, 553; J. P. Jones, 532; D. Hatley, 510; E. Keizer, 529; G. Lawrence, 510; N. Packard, 527; R. Eder, 554; L. Salyer, 525; S. Hopkins, 525; T. Wisniewski, 523; O. Kruse, 503; W. Eisenbeler, 522.

## Chelsea Suburban League

Standings as of Dec. 6

W	L
Foor Mobil	43 13
Kruske Arborland	35 21
Royal Lancers	33 24
Waterloo Garage	32 24
G. A. Sales	27 29
Dana Corp.	27 29
Patty Ann	26 30
Dancer's	25 31
Chelsea Lanes	24 32
State Farm	23 33
Pittsfield Plastics	22 34
Waterloo Store	17 39

225 series and over: W. Liebeck, 269; M. L. Westcott, 568; P. Foytik, 466; L. Keizer, 433; D. Fouty, 475; N. Packard, 448; D. Norris, 432; V. Hopkins, 454; N. Prater, 411; B. Smith, 432; J. Harook, 445; J. Simpson, 430; R. West, 504; E. McGibney, 430; M. Breitenwischer, 449; P. Elliott, 439; P. Huston, 450; M. De La Torre, 455; B. Fritz, 520; M. Abdon, 432; L. Beeman, 516.

150 games and over: W. Liebeck, 150-109; E. Williams, 158; 150; V. Finch, 166; M. L. Westcott, 202-162; A. Hocking, 154; P. Foytik, 169-153; L. Keizer, 158; D. Fouty, 183; N. Packard, 168; D. Norris, 183; V. Hopkins, 155; 157; N. Prater, 155; B. Smith, 152; J. Harook, 184; R. West, 108-156-180; R. McGibney, 186; 158; M. Breitenwischer, 170-170; M. Rush, 150; D. Hughes, 153; J. Buker, 176; P. Elliott, 150; 157; P. Huston, 153-164; M. De La Torre, 162-154; B. Fritz, 182-178-100; F. Lake, 155; M. Abdon, 164; L. Beeman, 150-169-191.

## Chelsea Lanes Mixed League

Standings as of Dec. 8

W	L
Welsh Rabbit	34 18
Johnson's Tool Shop	32 20
H. & H.	30 22 1/2
Doody & Turner	30 22
Poor-Fitz	30 22
Lyndon Color Lab	29 23
Wolverine No. 2	24 28 1/2
Chelsea Lanes	23 29
Wolverine No. 3	22 30
Gephart & Barkley	16 38
Wolverine No. 1	14 38

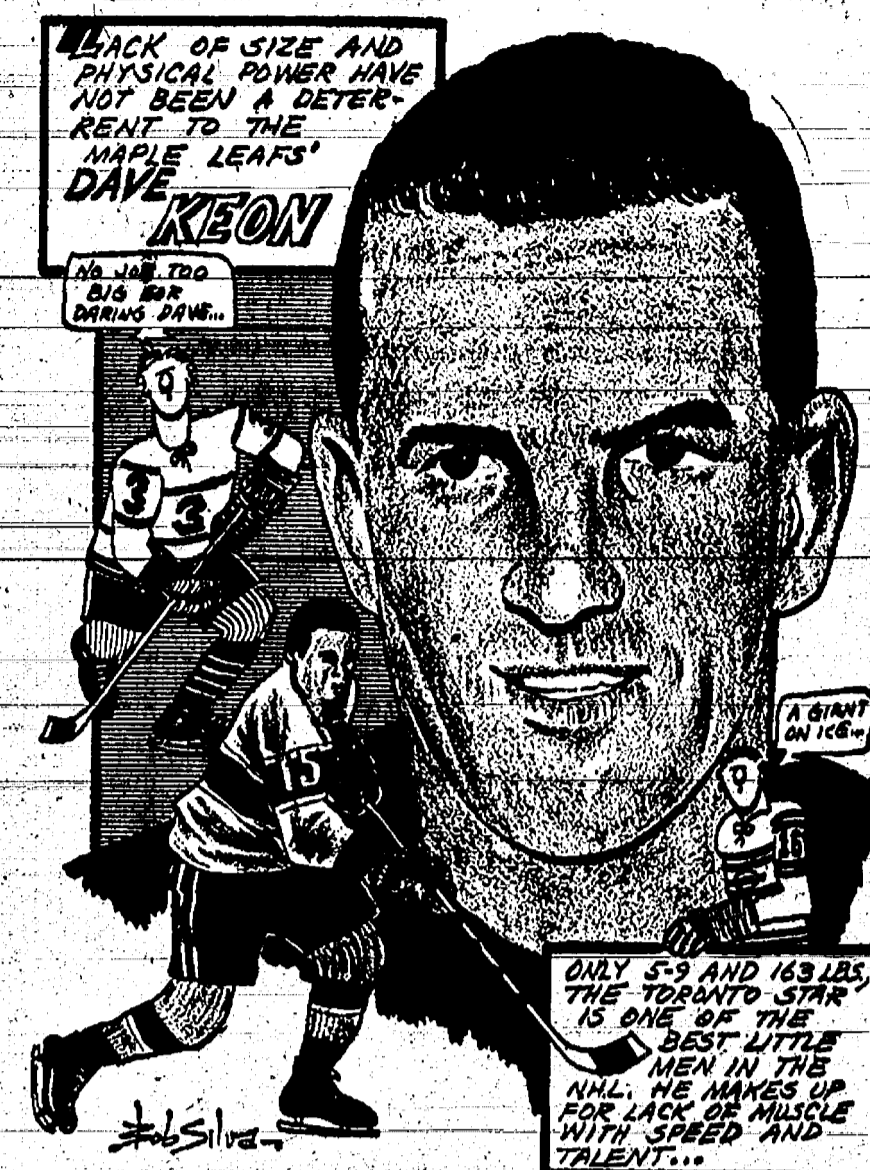
Men's 175 games and over: G. Burnett, 234-181; H. Burnett, 192-181-222; F. Powell, 192-216; O. Johnson, 199-214; D. Lyndon, 201-211-200; J. Goltra, 210; R. Kiel, 208; M. Poertner, 197-204; E. Robertson, 188-200; F. Barkley, 189; J. Harmon, 184; D. Welshans, 179; Gephart, 189; D. Sindlinger, 177; D. Alexander, 176; M. Rabbitt, 176.

Men's 475 singles and over: D. Lyndon, 412; H. Burnett, 595; G. Burnett, 581; M. Poertner, 571; F. Powell, 567; R. Kiel, 525; J. Goltra, 519; J. Harmon, 509; B. Harvey, 488; D. Welshans, 483; D. Alexander, 482; F. Barkley, 478.

Women's 150 games and over: P. Fitzsimmons, 205-232; A. Turner, 150-188; R. Johnson, 187-184; P. Poertner, 170-181-173; L. Doody, 190; E. Harmon, 177-177; J. Hutzel, 160-177; F. Gephart, 170-151; D. Alber, 167-160-170; S. Timmerman, 160-160-168; K. Lyndon, 160-167; V. Harvey, 161-164; L. Alexander, 156-155; M. Robertson, 150; A. Sindlinger, 150.

Women's 450 series and over: P. Fitzsimmons, 583; P. Poertner, 524; D. Alber, 503; E. Harmon, 503; R. Johnson, 490; A. Turner, 495; S. Timmerman, 494; J. Hutzel, 492; F. Gephart, 493; L. Doody, 458; V. Harvey, 458; K. Lyndon, 451.

## SPORTS CORNER



## Chelsea Women's League

Standings as of Dec. 6

W	L
Chelsea Cleaners	48 8
Chelsea Lanes	42 14
Jiffy Mixes	33 23
Chelsea Grindings	32 24
Foster's	30 26
Jim's Pure Service	30 26
Chelsea Milling	28 28
Schneider's	25 31
Janec's	19 37

Men's 200 games: L. Kusterer, 257-235; O. Hanson, 243; A. Fleischmann, 230-200; C. Keenan, 214; A. Kleis, 209; E. Greenleaf, 208-201; G. Schiller, 207; C. Miller, 212; G. Reuschler, 204; M. Packard, 204; D. Fritz, 203-200; C. Staphish, 203; J. Elliott, 204; B. Grabowski, 200; D. Beeman, 200.

## Rolling Pin League

Standings as of Dec. 12

W	L
Spooners	42 14
Pots	31 25
Jolly Mops	31 25
Mopper Uppers	31 25
Coffee Caps	30 26
Mixers	30 26
Crinklers	29 27
Egg Beaters	28 28
Kooper-Kusters	27 29
Dish Rags	26 30
Kitchen-Kapers	25 31
Grooms	8 48

400 and over series: J. Lewis, 426; D. Butler, 414; J. Lofquist, 420; D. Butler, 414; J. Lofquist, 430; S. Parker, 424; D. Palmer, 432; E. Harmon, 439; E. Reynolds, 449; A. Eisele, 406; P. Krueger, 460; S. McClure, 429; A. Pichea, 410.

140 and over games: J. Lewis, 162-166; G. Klink, 140; J. Priest, 147-142; J. Freeman, 140-144-142; J. Staphish, 145; J. Lofquist, 170; S. Parker, 162-141; G. Brier, 153; E. Reynolds, 175-140-144; E. Harmon, 148-141-150; D. Palmer, 153-145; G. Weiner, 144; A. Eisele, 152; W. Landwehr, 141; P. Krueger, 160-140-144; S. McClure, 170-148; B. Fike, 188; E. Williams, 148; A. Pichea, 143-166.

Splits converted: J. Priest, 3-10; D. Butler, 8-8-10; E. Reynolds, 3-10; D. Palmer, 5-7; G. Weiner, 4-5-7; E. Williams, 3-10; A. Pichea, 2-4-10.

## Chelsea Nite Owl League

Standings as of Dec. 11

W	L
Don's Std. Service	38 18
Jack & Son Barbers	36 20
Waterloo Garage	34 22
Chelsea Drug	31 25
Washtenaw Crop Ser.	29 27 1/2

Over 200 games: K. Norris, 220; A. Hanson, 222; H. Hunzelman, 212-211; N. Fahrner, 211; H. Morton, Jr., 211; N. Eisenmann, 208; W. Howes, 207; P. Weitlauf, 205; R. Fouty, 204; L. Salyer, 200.

Over 500 series: N. Fahrner, 587; H. Morton, Jr., 586; H. Kunzelman, 585; N. Eisenmann, 577; L. Hocking, 567; L. Salyer, 558; K. Norris, 552; A. Peterson, 548; A. Hanson, 547; R. Erekling, 542; R. V. Worden, 541; G. Dresch, 540; S. Hopkins, 538; F. Gee, 530; G. Gaeth, 516; P. Weitlauf, 515; S. Verwey, 515; J. Harook, 514; T. Chriswell, 513; W. Guest, 513; L. Keizer, 509; J. Fitzsimmons, 505; R. Fouty, 504; W. Howes, 504; D. Scott, 501.

**SYMBOL OF CONFIDENCE FOR 775,000 MICHIGAN MOTORISTS**

Are You One of Them?

For Full Membership Information Call Today

**RAY JOHNSTON**  
Phone 665-7701  
1200 S. Main St. Ann Arbor

## Chelsea Industrial League

Standings as of Dec. 6

W	L
Dana Corp.	40 16
Chelsea Lanes	38 18
Eder's Lime Spreaders	35 21
Central Fibre	20 27
Juanita Beauty Shop	28 28
Deouble A-Products	25 31
Chelsea Milling	14 42
Smith's Camper Corner	14 42

High team series: Chelsea Lanes, 2,502; Smith's Camper Corner, 2,385; Eder's Lime Spreaders, 2,306.

High ind. series: A. Hansen, 608; P. Kelly, 522; T. Patterson, 517.

200 and over games: A. Hansen, 219; T. Patterson, 212; J. Patterson, 202; C. Mosier, 201.

500 games and over: A. Hansen, 608; P. Kelly, 522; T. Patterson, 517; M. Manville, 502; A. Fletcher, 500.

## Old Timers League

Standings as of Dec. 8

W	L
Blatz Beer	40 16
B. G. ZK.	34 22
Washtenaw Lanes	32 24
Huron Lanes No. 2	31 25
Hartman, Inc.	28 28
Huron Lanes No. 1	27 29
Stain & Co.	27 29
Budweiser Beer	26 30
Chelsea Lanes	25 31
Colonial Lanes	25 31
Team No. 11	23 33
City Bus	17 39

Blatz Beer and Budweiser Beer won three.

High team game: Chelsea Lanes, 800.

High team series: Colonial Lanes, 2,287.

High ind. game: Larry Dann, 246-558.

High ind. series: Emil Yek, 208-565.

Other 200 games and 500 series and over: William Karr, 541; Jonas Otto, 519; Byron Drake, 516; Russell Kinnel, 502; George Hager, 202-500; Ray Baker, 203.

## Junior House League

Standings as of Dec. 7

W	L
Mid-State Finance	61 29 1/2
Budweiser	56 35
Palmer's T-Birds	55 38
Gambles	52 39
Wolverine	46 45

Over 200 games: K. Norris, 220; A. Hanson, 222; H. Hunzelman, 212-211; N. Fahrner, 211; H. Morton, Jr., 211; N. Eisenmann, 208; W. Howes, 207; P. Weitlauf, 205; R. Fouty, 204; L. Salyer, 200.

Over 500 series: N. Fahrner, 587; H. Morton, Jr., 586; H. Kunzelman, 585; N. Eisenmann, 577; L. Hocking, 567; L. Salyer, 558; K. Norris, 552; A. Peterson, 548; A. Hanson, 547; R. Erekling, 542; R. V. Worden, 541; G. Dresch, 540; S. Hopkins, 538; F. Gee, 530; G. Gaeth, 516; P. Weitlauf, 515; S. Verwey, 515; J. Harook, 514; T. Chriswell, 513; W. Guest, 513; L. Keizer, 509; J. Fitzsimmons, 505; R. Fouty, 504; W. Howes, 504; D. Scott, 501.

**Obviously, the gift for executives**

**Samsonite CLASSIC ATTACHE**

The business case that projects an image of success from the word go. Sleek. Elegant. 8 inches thin. Hidden locks. Lightweight magnesium frame. Richly handsome exterior of resilient Samsonite Absolute that's scuff and stain-resistant. Built-in expandable file folder.

In Deep Olive, Jet Black and Oxford Grey.  
3" COMMUTER—\$27.95 5" DIPLOMAT—\$29.95

**Strieter's Christmas Store for Men**

**WOLVERINE TAVERN**

1 Block North of Bowling Alley on Old US-12

SERVING YOUR FAVORITE BEER - WINE ALE - LIQUOR HOME-MADE CHILI HAMBURGS SANDWICHES

CARL - NINA DON - GINNY

**Billiards THE FAMILY GAME**

**New Fun Game, Easy To Play... All Can Learn!**

Try billiards for an evening's fun. It's new... exciting... easy to learn... the whole family can play together... great fun, and so inexpensive!

**CHELSEA LANES**  
1180 M-52 Phone GR 5-8141

**Guys and Gals Mixed League**

Standings as of Dec. 7

W	L
Chelsea Lanes	41 11
Manchester Farms	30 16
Pleasant Lake Resort	33 19
Raydon	31 21
Four B's	28 24
Western Auto	25 27
Murphy's Barber Shop	22 30
Strikers	21 31
Grass Lake	21 31
Four G's	18 34
Pin Tippers	18 34
Wurster's Greenhouse	17 35

High series: Manchester Farms, 2,005.

Women's high game: B. Fritz, 215.

Women's high series: S. Timmerman, 518.

Women's 150 or over games: S. Timmerman, 166-181-169; C. Reinhart, 162-157; P. Elliott, 169-176-150; S. Greenleaf, 162-174; D. Norris, 155; B. Fritz, 215-164.

Women's 425 or over series: B. Fritz, 508; P. Elliott, 501; S. Greenleaf, 500; D. Norris, 442; S. Timmerman, 518; C. Reinhart, 450; T. Steinaway, 482.

Men's high series: A. Steinaway, 581.

Men's high game: D. Huston, 217.

Men's 175 or over games: P. Reinhart, 188; D. Walton, 194-192; A. Steinaway, 210-201; E. Greenleaf, 176; J. Elliott, 178; J. Toon, 170-187; D. Fritz, 184; R. Huston, 193; O. Timmerman, 180; G. Krueger, 185-190; R. Green, 191; K. Cole, 210; R. Weiss, 202; D. Huston, 217; C. Harley, 178.

Men's 500 or over series: K. Cole, 545; G. Krueger, 540; J. Toon, 523; P. Reinhart, 505; D. Walton, 531; A. Steinaway, 581.

**Food Service Grants Now Available at MSU**

East Lansing—More than 30 scholarships, ranging in value from \$354 to \$1,000 a year are available to Michigan high school seniors planning to study at Michigan State University for careers in the food and dairy industries.

Sponsors of the grants, according to MSU's Department of Food Science, include the Institute of Food Technologists, General Foods, Chicago Dairy Technology Society, Michigan Food Industry and Michigan Dairy Memorial Foundation.

Information on the scholarships is available from MSU's Department of Food Science.

**YOUR FAVORITE SANDWICHES**

Served at all hours.

BEER - WINE - ALE Dancing at all times.

**WONDER BAR**  
20750 Old US-12 West Phone 479-9841

**FOR CHRISTMAS... GIVE A POOL TABLE**

A gift to be enjoyed by your family for years...

COMPLETE SELECTION of over 40 tables on display from \$99 or Give Them a PING-PONG TABLE

Our Best Table, Reg. \$59.95 REDUCED \$49.95

Many other tables on display from \$39.95.

**VISCOUNT POOL and Sports Store**  
2450 W. Stadium ANN ARBOR - 761-0106  
Open Daily 9 a.m. 'til 9 p.m. Open Sunday 11 a.m. 'til 9 p.m.

**Tri-City Mixed League**

Standings as of Dec. 8

W	L
Pepsi-Cola	34 22
Chelsea Cleaners	33 23
Modern Beauty Shop	32 24
Eibler, Frisinger, St. A.	30 26
Drewry's	28 28
House of Orient	27 29
Blatz	25 31
Odd Balls	24 32
Miller & Miller	24 32
Cavanaugh-Lake	23 33

Women's 150 games: G. Carpenter, 154; N. Miller, 154; C. Peterson, 170-150; G. Detling, 181-182-203; L. Jarvis, 149; M. Aehmster, 160; B. Parish, 200; D. Sannes, 165.

Women's 450 series: G. Detling, 500; C. Peterson, 453; B. Parish, 403.

Men's 200 games: C. Lake, 220; B. Stone, 207; C. Miller, 202; A. Sannes, 201; B. Cruse, 200.

Men's 500 series: C. Lake, 525; W. Griffith, 572; R. Worden, 512; C. Miller, 502; R. Kaiser, 545; B. Cruse, 543; A. Sannes, 520; R. Fike, 534.

**Vocational Education Vital in Rural Schools**

East Lansing—Michigan State University is operating a project aimed at fulfilling a long neglected need: development of more vocational-technical education in small rural high schools.

MSU researchers point out that because rural high schools have had few vocational education programs in the past, many rural youths have left their hometowns to seek jobs without preparing for them.

Purpose of the project—already operated at pilot schools in Onaway, Crystal Falls and Petch-Channing—is to improve "the quality and image of vocational programs offered in rural high schools."

**'68 Buick Skylark \$2664.\* Now we're talking your language.**

We gave Skylark a brand new look. And we gave her a price tag you can afford. \$2664. Is that talking your language?

We also gave Skylark a new wheelbase. We shortened it by three inches. It parks easier. And you'll think you're driving a sports car.

The engine runs on regular gas. Now you can take it easy on the family budget and travel in style.

Wouldn't you really rather have a Buick?

\*Manufacturer's suggested retail price for Skylark Sport Coupe. Model shown below has extra cost wheel covers, 231.00, and whitewall tires, 131.00. All prices include federal Sales Tax and suggested dealer delivery and handling charge (transportation charge, accessories, other optional equipment, state and local taxes additional).

The '68 Buicks with the new GM safety features are at your Buick-Oldsmobile dealer's.

**Daniels Motor Sales, Inc.**  
118 North Main Street, Chelsea, Michigan

NORTH ELEMENTARY SCHOOL NOTES

ERGARTEN—Teacher, Mrs. Packard... everyone is getting very excited with Christmas so close.

GRADES—Teachers, Mrs. Foreman, Samulson, Mrs. Staffan... Mrs. Staffan's room made large Christmas trees for each reading.

ND GRADE—Teacher, Mrs. Adams... have been discussing how to celebrate Christmas as compared to the Jewish Hanukkah.

RD GRADE—Teacher, Mrs. Lees... Reporter, Diana Pletcher... Mrs. Lees' class is making Christmas cards for our parents.

men and other Christmas decorations. For Thanksgiving we made turkey out of pine cones, pipe cleaners and construction paper.

Teacher, Mrs. Madsen... Reporter, Karen Trinkle... For Christmas we have been making Santas and a reindeer.

FOURTH GRADE—Teacher, Mrs. McCullough... Reporter, Sue Schueleke... We are all picking a country in the world and are reading about it.

Teacher, Mrs. Wilderom... Reporter, Nancy Hepburn... Last week we finger painted with blue paint and also last week we made snowflakes.

FIFTH GRADE—Teacher, Mrs. Cox... Reporter, John Schaefer... Our class is decorating the bulletin boards in the office this month.

Teacher, Mrs. Maxwell... Reporter, Cynthia Ball... Our class was studying about birds so we decided to make a bird feeder.

Teacher, Mrs. Winkle... Reporter, Ann Kalmbach... In Mrs. Winkle's room we have been studying foods. We are studying the seven basic groups: carbohydrates, fats, protein, mineral and vitamins.

EARTHQUAKES... The force of an earthquake is enormous. For example, the largest earthquake release 10,000 times more energy than the atomic bomb dropped on Hiroshima during World War II.



INDUCTED INTO HONOR SOCIETY: At a 1 p.m. ceremony Friday, Dec. 8 in the Chelsea High school auditorium, the following 26 seniors and juniors were inducted into the Charles S. Cameron Chapter of the National Honor Society...

Honor Society Inducts 26 New Members

Twenty-six members of the junior and senior classes were inducted into the Charles S. Cameron Chapter of the National Honor Society in the Chelsea High school auditorium Friday, Dec. 8 at 1 p.m.

The Serviceman's Corner

Chelsea Servicemen Participate in Giant First Fleet Exercise... USS Fletcher—Storekeeper Third Class James R. Perry, USN, son of Mr. and Mrs. John R. Perry of 509 W. Middle St. and Sonar Technician Second Class John M. Norris, USN, son of Mrs. Leva Norris of 170 Park St., both of Chelsea, Mich., participated in "Blue Lotus," the largest U. S. First Fleet Exercise in three years, aboard the destroyer USS Fletcher.

BOY SCOUT NEWS

Mr. and Mrs. Robert Weirich and family, of Manchester, entertained at a birthday gathering Thursday in honor of the former's mother, Mrs. William Weirich of this vicinity. Mrs. Weirich's daughter, Pay Ann, was also a guest.

Pvt. Norman Walsh Training at Ft. Knox

Pvt. Norman Walsh, Army Private Ft. Knox, Ky., assigned to Company A, 16th Battalion, 4th Brigade, here in the United States Army Training Center, Armor (USATCA). He will spend the next two months learning the fundamental skills of the soldier in today's modern, action Army—firing live ammunition under simulated combat situations learning protective measures and first-aid for chemical, biological and radiological attacks, as well as being schooled in the use of modern arms.

GOOD BRAKES NECESSARY!

Be sure your car is set for safe driving and safe stopping. Come in soon and let us check your brakes—put them in "tip-top" condition.

Bill Brown's Super Service GOOD GULF PRODUCTS PHONE GR 9-1811

U. of M. Experts Address Ypsilanti Arthritis Forum

The public was welcomed to the Ypsilanti Arthritis Forum Tuesday, Dec. 5 by Rodney E. Hutchinson, president, Ypsilanti Community Chest. The Michigan Chapter, Arthritis Foundation, the only national voluntary health agency dedicated to this problem, is a member agency of the Michigan United Fund and is supported by the Chelsea Community Chest and other nearby community funds.

Approximately 85 arthritic and interested persons present learned from a panel of prominent arthritologists about the intensive on-going efforts to determine the cause and cure for arthritis and the many and complex related rheumatic diseases. But until a cure and a method of prevention are found, education, in training physicians and medical personnel in the proper methods of diagnosis and treatment, is most important.

Of equal importance to the 820,000 afflicted in Michigan, the panelists explained, should be the realization and encouragement by the extent of this around-the-clock effort along with the recent developments in these areas of research, understanding and patient care. And they were urged to merely take that first step—see a qualified physician as soon as possible, if they were not already in the care of a specialist.

Panelists, who answered questions from the audience, included Doctors Ivan F. Duff and C. William Castor, Professors of Internal Medicine; and Doctor William S. Smith, Head, Section of Orthopedic Surgery, all of the University of Michigan Medical Center, along with staff members from the Michigan Chapter.

BIG INNING

The Tigers scored 10 runs against Minnesota on June 13th; their largest total of the 1967 season.

JA 'Senate' Organizes as Policy Group

Competition is on for nomination to office in a governing body representing some 8,000 Junior Achievers. The Achievers Association of South-eastern Michigan, composed of presidents of 417 JA companies, is screening applicants on the basis of qualifications, oral presentations, and campaign material.

Membership in the Association," said Ronald D. Anspaugh, 3445 Croissant, Dearborn, "is the highest advisory position in which an Achiever can serve." During the 1966-7 season, Anspaugh represented the Telegraph JA Center.

As the parent guidance group, the Association considers requests of Achievers and recommends policy to strengthen JA programs, unify business councils, and improve public relations of teenagers. It also promotes participation in JA trade fairs and conferences and develops candidates for national JA offices.

The Association operates under strict parliamentary rules and functions much as a senate for the organization.

MIKE'S ANTENNA SERVICE and Speaker Installation Pre-wired homes for TV For Free Estimate, Call Pinkney 878-3962

MID-STATE FINANCE CORP. \$25 to \$1,000 For Any Worthwhile Purpose See or Call FRANK HILL at 475-8631 111 PARK STREET CHELSEA, MICH.

NEW LOCATION REA EXPRESS AGENCY NOW AT ASHLAND SERVICE North Main at Buchanan, Chelsea PHONE 475-7355 Hours: 8 a.m. to 8 p.m.

GARBAGE REMINDER To Village Residents To enable proper pick-up service, garbage and rubbish must be placed at the curb in fly-tight containers. Containers are to be no more than 20-gallon capacity and are not to exceed 2 in number for both garbage and rubbish. Metal containers are preferred over a plastic type to prevent blowing into the streets and cracking during cold weather. The Village Council

CANCELED CHECKS ARE PROOF OF PAYMENT File them Systematically WITH AN Amille CHECK CASE Now you can find that important canceled check at a moment's notice. Holds up to 2 years supply of checks. Case is made of heavy binder's board. File checks by month or alphabetically. Heavy gold gummed labels included. 3 Attractive Colors CHERRY RED SEA GREEN NAVY BLUE Priced at only \$1.95 Makes a real nice gift item, too! THE CHELSEA STANDARD 300 N. Main Street Phone GR 5-3581

We interrupt this season with a Christmas Message. Shop Now. There are no crowds. Our selection is complete. And \$1 will hold your Bulova until The Day. Golden Fleur "B" - Glistening 18K gold encases a 23 jewel watch, Yellow or white, \$100.00. First Lady "B" - Two dials, Goddess of Time "OD" - Golden Goddess "B" - Monday, a prettily Flaming beauty. Elegant 14K gold case signed case, 17 jewels, 14K gold case, 17 jew. 23 jewels. Faceted crystal. Faceted crystal. Yellow or white. \$49.95 Yellow or white, \$69.95 \$88.00. When you know what makes a watch tick, you'll give a Bulova.

# Services in Our Churches

**ST. PAUL UNITED CHURCH OF CHRIST**  
The Rev. Warner Siebert, Pastor  
Saturday, Dec. 16—  
9:00 a.m.—Confirmation class.  
10:30 a.m.—Children's choir.  
11:00 a.m.—Youth choir.  
Sunday, Dec. 17—  
9:15 a.m.—Church school.  
10:30 a.m.—Worship.  
Monday, Dec. 18—  
No Board of Christian Ed. meeting.  
Wednesday, Dec. 20—  
7:15 p.m.—High school choir.  
8:00 p.m.—Senior choir.

**BETHEL EVANGELICAL AND REFORMED CHURCH**  
(United Church of Christ)  
Freedom Township  
The Rev. T. W. Menzel, Pastor  
Saturday, Dec. 16—  
9:00 a.m. to 12 noon—Confirmation.  
Sunday, Dec. 17—  
10:00 a.m.—Worship.  
11:00 a.m.—Sunday school.  
7:00 p.m.—Caroling, adults and young couples.  
Wednesday, Dec. 20—  
11:30 a.m.—Senior citizens luncheon.

**IMMANUEL BIBLE CHURCH**  
145 E. Summit St.  
The Rev. Frank C. Frinkle, Pastor  
Saturday, Dec. 16—  
10:00 a.m.—Christmas program practice.  
Sunday, Dec. 17—  
9:45 a.m.—Sunday school.  
11:00 a.m.—Morning worship.  
Nursery available for worship service and Sunday school.  
6:00 p.m.—Orchestra practice.  
6:30 p.m.—Adult choir practice.  
7:00 p.m.—Christmas program in place of evening worship.  
Wednesday, Dec. 20—  
7:00 p.m.—Adult choir practice.  
7:30 p.m.—Junior choir practice.  
7:30 p.m.—Prayer service and Bible study.

**FIRST CHURCH OF CHRIST, SCIENTIST**  
1883 Washtenaw Ave., Ann Arbor  
Sunday, Dec. 17—  
Golden Text of this week's Bible Lesson is from Jeremiah: "All flesh is corrupt, they have made the heaven and the earth by their great power and stretched out arm, and there is nothing too hard for them." This is so, nothing too hard for them, including Man, Evolved by Atomic Force!"

**NORTH LAKE METHODIST CHURCH**  
The Rev. George Nevin, Pastor  
Sunday, Dec. 17—  
9:30 a.m.—Worship service.  
10:30 a.m.—Sunday school.  
Saturday, Dec. 16—  
9:00 a.m. to 4:00 p.m.—Bake sale and bazaar at Hilltop Plumbing, benefit building fund.

**CONGREGATIONAL CHURCH**  
(United Church of Christ)  
The Rev. Daniel Kellin, Pastor  
Thursday, Dec. 14—  
8:30 p.m.—Junior choir rehearsal.  
7:30 p.m.—Senior choir rehearsal.  
Saturday, Dec. 16—  
9:30 a.m.—Sunday school rehearsal for Hanging of the Greens.  
Sunday, Dec. 17—  
10:00 a.m.—Worship.  
Two special Christmas programs—  
10:30 a.m.—Hanging of the Greens, by the Sunday school.  
4:30 p.m.—Service of Lessons and Carols, presented by the church choir.  
Wednesday, Dec. 20—  
7:30 p.m.—Deacons' meeting.

**ST. BARNABAS EPISCOPAL CHURCH**  
20500 Old US-12  
The Rev. William D. Ladkau, Vicar  
Rectory Phone HA 6-8815  
Thursday, Dec. 14—  
8:00 p.m.—ECW meeting.  
Sunday, Dec. 17—  
9:15 a.m.—Holy Communion.  
9:15 a.m.—Church school and nursery.  
Monday, Dec. 18—  
8:00 p.m.—Inquirers' class.  
Thursday, Dec. 21—  
10:00 a.m.—Holy Communion, Feast Day of St. Thomas.

**ZION LUTHERAN CHURCH**  
Corner of Fletcher, Waters Rds. (Rogers Corners)  
The Rev. John R. Morris, Pastor  
Saturday, Dec. 16—  
9:00 a.m.—Eighth grade youth instruction class.  
10:30 a.m.—Seventh grade youth instruction class.  
Sunday, Dec. 17—  
9:00 a.m.—Sunday school.  
10:15 a.m.—Worship.  
2:00 p.m.—Sunday school program rehearsal.  
7:00 p.m.—Luther League executives.  
7:30 p.m.—Luther League.  
Monday, Dec. 18—  
7:45 p.m.—Junior and senior choir rehearsal.

**CHURCH OF CHRIST**  
13061 Old US-12, East  
R. D. Parnell, Minister  
Sunday, Dec. 17—  
10:00 a.m.—Bible study.  
11:00 a.m.—Worship service.  
5:00 p.m.—Worship service.  
Bible study each Wednesday at 7:00 p.m.

**ST. JACOB EVANGELICAL LUTHERAN CHURCH**  
12501 Reithmiller Rd., Grass Lake  
The Rev. Andrew Bloom, Pastor  
Sunday, Dec. 17—  
8:45 a.m.—Worship service.  
9:45 a.m.—Sunday school.  
10:45 a.m.—Worship service.

**FIRST METHODIST CHURCH**  
The Rev. Robert Worgess, Pastor  
Friday, Dec. 15—  
8:30 p.m.—Christian Home Group, home of James McLaughlin.  
Saturday, Dec. 16—  
9:00 a.m.—Practice for Christmas Program, Kindergarten through Jr. Hi.  
12:30 p.m.—Older Adult Fellowship Potluck, Soc. Center.  
Sunday, Dec. 17—  
9:00 a.m.—Church School (Adult and 3rd grade through senior high).  
10:00 a.m.—Church School (Nursery through 5th grade).  
10:00 a.m.—Worship Service.  
6:00 p.m.—Christmas Program.  
7:00 p.m.—Senior MYG.

**SALEM GROVE METHODIST CHURCH**  
The Rev. George Nevin, Pastor  
Sunday, Dec. 17—  
10:00 a.m.—Sunday school.  
11:15 a.m.—Worship service.

**WATERLOO VILLAGE CHURCH**  
(Evangelical United Brethren)  
The Rev. Wilbur Silvernail, Pastor  
Sunday, Dec. 17—  
10:00 a.m.—Sunday school.  
11:15 a.m.—Worship service.

**ST. THOMAS EVANGELICAL LUTHERAN**  
Freedom Township  
The Rev. John W. Ribar, Pastor  
Thursday, Dec. 14—  
8:00 p.m.—Choir practice.  
Saturday, Dec. 16—  
Children's Christmas rehearsal.  
Sunday, Dec. 17—  
10:00 a.m.—Holy communion.  
11:00 a.m.—Special voters assembly.  
12:00 a.m.—Family day potluck.

**CHELSEA BAPTIST CHURCH**  
The Rev. Elmer S. Steenson, Pastor  
Sunday, Dec. 17—  
10:00 a.m.—Sunday school.  
11:00 a.m.—Worship service.  
Nursery care available during Sunday school and worship service.  
6:00 p.m.—Service for Junior Young People.  
7:00 p.m.—Service for Senior Young People.  
7:00 p.m.—Evening worship service.  
Wednesday, Dec. 20—  
7:30 p.m.—Bible study and prayer meeting.

**GREGORY BAPTIST CHURCH**  
The Rev. Millard Heron, Pastor  
Sunday, Dec. 17—  
10:00 a.m.—Worship service.  
11:15 a.m.—Church school.  
6:30 p.m.—Baptist Youth Fellowship.  
7:30 p.m.—Evening worship.

**ST. JOHN'S EVANGELICAL AND REFORMED CHURCH**  
(United Church of Christ)  
Francisco  
The Rev. Stephen Peterson, Pastor  
Sunday, Dec. 17—  
9:30 a.m.—Morning worship.  
9:45 a.m.—Sunday school.

**METHODIST HOME CHAPEL**  
The Rev. John Fall, Administrator  
The Rev. Wm. Johnson, Chaplain  
Sunday, Dec. 17—  
8:45 a.m.—Worship service.

**FIRST ASSEMBLY OF GOD CHURCH**  
14900 Old US-12  
The Rev. Charles E. Hardin  
Sunday, Dec. 17—  
10:00 a.m.—Sunday school.  
11:00 a.m.—Worship service.  
7:00 p.m.—Youth service.

**SUNDAY'S SERMON**  
**CHANGE**  
Never underestimate your ability to change the world in which you live. You can do it if you try.  
Among the great population of this country, only a few individuals in each field endeavor to achieve national fame. A few men in politics, science, religion and other activities become known around the world. Some indubitably inscribe their names in the pages of history.  
Yet there is something to be achieved by the average individual. Each of us has some effect on the world in which we live. It matters not if one never travels more than a hundred miles from the spot where he was born. He can change the world—at least, that small part of it in which he lives.  
You can change the world with a smile. You can do it with a good deed. A helping hand. A kind word. A visit to a sick friend.  
You can do it because it takes, sometimes, a little effort. Extend this effort and you have brought about a change. Something good was done, that would never have been done, had not you set forth to do it.  
It is a small thing. Yet, if enough of us worked at it, we could change more and more little parts of the world. We might even start a chain reaction.

**Draft Policy Questions Answered**  
Question: I will finish high school next January and will enter college a week later. What must I do to get a II-S college student deferment?  
Answer: You must file a written request for a II-S deferment with your Local Board. After you have started your college work, you should have your school send a Student Certificate to your Local Board providing evidence that you are satisfactorily pursuing a full-time course of instruction at that institution.  
Question: I am over age 28. Recently I was declared a delinquent and ordered to report for induction. If the induction age are 18 1/2 to 26, how can I be inducted?  
Answer: Registrants deferred on or after June 19, 1961, are liable for training and service until age 35. Additionally, any person who has failed or refused to report for induction remains liable for induction and, when available, shall be immediately inducted, regardless of age.  
Question: When I reach my 18th birthday next month I will be in college some 500 miles from my home. Must I go home to register?  
Answer: No. You may register at any of the more than 4,000 local boards located throughout the country. Consult the telephone directory for the city where you are living to determine the address of the local board nearest you. By calling at that board, you will be able to complete your registration which will then be sent to the local board having jurisdiction over the area where your home is located. The board to which it is sent will always be your local board of jurisdiction.  
Question: I have been ordered to report for a pre-induction examination by my local board. What is the very minimum time I have before being inducted?  
Answer: The minimum time is 21 days after your local board has mailed to you a Statement of Acceptability (DD Form 62), which indicates that you are acceptable as a result of your pre-induction examination.

**MSU Report Advises Education with More International Flavor**  
East Lansing—A blue-ribbon faculty committee has recommended that every American student at Michigan State University have an international dimension built into his education. The Committee for the Review of International Programs reported after a year-long study that educational requirements are being changed by this nation's greater global commitment and by Americans' increased travel and work overseas. The committee's report noted that 50 percent of MSU's students have traveled outside the United States, and 16 percent planned foreign professional careers. "These figures will rise in the decades ahead," according to the report.

It also urged a wider offering of overseas programs. At MSU students more extracurricular opportunities related to cultural affairs, and a student advisory service in international areas. "Hard work makes almost any job easy," backing off and delaying the job makes any undertaking more difficult.

**ST. JOHN'S EVANGELICAL AND REFORMED CHURCH**  
(United Church of Christ)  
Rogers Corners  
The Rev. Stephen Peterson, Pastor  
Sunday, Dec. 17—  
10:00 a.m.—Sunday school.  
11:00 a.m.—Morning worship.

**NORTH SHARON COMMUNITY BIBLE CHURCH**  
Sylvan and Washburn Rds.  
The Rev. Paul Collins  
Sunday, Dec. 17—  
10:00 a.m.—Sunday school.  
11:00 a.m.—Worship service.  
6:30 p.m.—Young People's service.  
7:00 p.m.—Evening service.

**ST. MARY'S CATHOLIC CHURCH**  
The Rev. Fr. Francis Maliszewski  
Saturday, Dec. 16—  
4:50 p.m.—Confessions.  
7:30-9:00 p.m.—Confessions.  
Sunday, Dec. 17—  
Masses at 6:30 a.m., 8 a.m., 10 a.m. and 11:30.

**FIRST UNITED PRESBYTERIAN CHURCH**  
Unadilla  
The Rev. John Jeffrey, Pastor  
Sunday, Dec. 17—  
9:45 a.m.—Church school.  
11:00 a.m.—Worship service.  
Every Tuesday—  
8:00 p.m.—Choir practice.

## MSU Economist Raps Negative Income Tax

East Lansing—A Michigan State University labor economist, Dr. Charles C. Killingsworth, has warned that the negative income tax and two other welfare proposals "will not do everything that is claimed for them." Addressing the annual meeting of the Michigan Welfare League in Lansing, Dr. Killingsworth expressed opposition to the negative income tax, guaranteed annual income and the family allowance idea. The negative income tax, he noted, provides supplemental payments for families whose income falls below a designated poverty level. He said the difficulty with such a plan would be to make adequate while retaining incentive and overall cost. He urged modification of present welfare programs as best immediate answer.

**GM HIRING POLICY**  
Detroit—General Motors has announced plans to job Detroit companies in an effort to put more Negroes to work. The company said that workers hired in that area in the last three months were 15 percent Negroes.

**MSU Appoints Director For Student Volunteers**  
East Lansing—A 24-year-old graduate student, James R. Tanek, has been appointed the first director of Michigan State University's newly created Office of Volunteer Programs. The office was established by MSU's Board of Trustees, an action regarded as official endorsement of the growing number of service projects managed by thousands of MSU students. The largest of the student efforts is the Student Education Corps, now including some 2,200 volunteers who are tutorial and teaching assistants in 72 schools throughout south-central Michigan.

**LONG GI LEAVE**  
San Francisco—Pfc. Joseph Allen Smith's two-year hitch as a draftee is up and he wants to get out of the Army. Smith, 29, spent 18 months of his time on leave after a mix-up ordering him to await orders while on a 30-day leave.

**Save 1/3 on Fuel**  
Keep warm in winter — and cool in summer — with rock wool insulation.  
Down go your fuel bills when you insulate with rock wool. Keeps heat IN during the winter—keeps heat OUT in summer!  
Rock Wool Insulation  
HAND-POURING: 3" depth at 85% of heat. Pours smoothly in bag. Fire-proof, moisture-resistant.  
GRANULATED ROCK WOOL  
LOOSE ROCK WOOL  
BLANKET - ROLLS  
ROCK BATTES  
BALSAM WOOL

**Finkbeiner Lumber Co.**  
Phone CHelsea GR 9-3881  
On Old US-12  
JULY OFF

MARTIN STEINBACH, Owner

# Give your husband a Gas range for Christmas.

You know how much he likes good cooking. And he deserves to have his meals prepared on the best there is. You know how dollar conscious he is. And a Gas range costs about 1/2 as much to cook on as an electric stove. You know how hellish it is to plan ahead. Gas ranges help. With automatic timers that cook your meats while you're out. Burners with a brain. Smokeless broiling. Even timers to turn your oven on or off—or do up to "warm"—while you're miles away. You know how much he loves a bargain. And right now, at your appliance dealer's and in our showrooms, there's a great selection of new Gas ranges at bargain prices. We'll even hook them up, free. The terms are easy, he won't even have to pay for the new Gas range you give him until next year. And by then, he'll have rediscovered what a great cook you really are.

**Gas cooks best for less.**  
MICHIGAN CONSOLIDATED GAS COMPANY



**FOR PROFIT**  
**FEED**  
See us for your needs  
Profit-Producing Feeds For Livestock, Poultry.  
In our complete line of Fortified Feeds, you'll find the right feeds to keep livestock and poultry growing, gaining and producing.  
**Farmers' Supply Co.**  
Phone GR 5-5511

**Santa has Christmas well in hand!**  
Because he joined our Christmas Club!  
**Christmas Club Check**  
PAY TO THE ORDER OF *Mother & Son* \$100.00  
*One hundred and 00/100 DOLLARS*  
*J. Killingsworth*

**FOLKS USE CHRISTMAS CLUB FOR MANY PURPOSES**  
HERE ARE A FEW:  
• Christmas • Vacations • Education  
• Appliances • Taxes • Rainy Day

**YOU CAN CHOOSE THE CLASS THAT FITS YOUR BUDGET AND YOUR GOAL**

\$ .50 each week for 50 weeks	\$ 25.00
\$ 1.00 each week for 50 weeks	\$ 50.00
\$ 2.00 each week for 50 weeks	\$ 100.00
\$ 3.00 each week for 50 weeks	\$ 150.00
\$ 5.00 each week for 50 weeks	\$ 250.00
\$10.00 each week for 50 weeks	\$ 500.00
\$20.00 each week for 50 weeks	\$1,000.00

**NOW... is the time to...**  
**Join our Christmas Club**  
FIRST PAYMENT ON 1968 CHRISTMAS CLUB DUE DECEMBER 1  
**CHELSEA STATE BANK**

### Club and Social Activities

**MODERN MOTHERS**  
Modern Mothers Child Study Club met Tuesday, Dec. 12 at the home of Mrs. William Clark, with Mrs. Eldon, Eissle, Mrs. Richard Buss and Mrs. Walter Brown as co-hostesses.  
Members enjoyed their Christmas party with a gift exchange. Eighteen members were present. The next meeting will be held Tuesday, Jan. 9 at the home of Mrs. Darvall Fischer.

**CHILD STUDY CLUB**  
Chelsea Child Study Club held its Christmas party Tuesday, Dec. 12 at the home of Mrs. Robert Daniels. Part of the evening's entertainment was a flute solo performed by Mrs. Sherry Plank. Santa Claus paid the club a visit and assisted in passing the home-made gifts brought by the members.  
Refreshments were served by Mrs. Jerry Walyko, Mrs. Jack Cattel and Mrs. Joe Marzoc.  
The Fannenburg Tour is set for Sunday, Mrs. Daniels' home, one of the residences to be featured on the tour, has been beautifully decorated. If it is an indication of what is in store on the tour, according to Chelsea Child Study Club members, no one should miss the chance to see these homes.  
The next meeting will be Tuesday, Jan. 9 at the home of Mrs. Larry Chapman.

**WOMAN'S CLUB**  
Woman's club of Chelsea met Tuesday evening, Dec. 12 for its Christmas party. Mrs. James Craig, a former member of the club who now lives in Grand Blanc, presented an unusual collection of beautiful madonnas. Her interesting talk on the history of the Madonna, which she traced from its beginning to the present time, was illustrated with color slides.  
Refreshments were served by the hostesses, Mrs. Paul Maroney and Mrs. Wilbur Hinderey.

**WOMAN'S CLUB**  
Woman's club of Chelsea met Tuesday evening, Dec. 12 for its Christmas party. Mrs. James Craig, a former member of the club who now lives in Grand Blanc, presented an unusual collection of beautiful madonnas. Her interesting talk on the history of the Madonna, which she traced from its beginning to the present time, was illustrated with color slides.  
Refreshments were served by the hostesses, Mrs. Paul Maroney and Mrs. Wilbur Hinderey.

**WOMAN'S CLUB**  
Woman's club of Chelsea met Tuesday evening, Dec. 12 for its Christmas party. Mrs. James Craig, a former member of the club who now lives in Grand Blanc, presented an unusual collection of beautiful madonnas. Her interesting talk on the history of the Madonna, which she traced from its beginning to the present time, was illustrated with color slides.  
Refreshments were served by the hostesses, Mrs. Paul Maroney and Mrs. Wilbur Hinderey.

**WOMAN'S CLUB**  
Woman's club of Chelsea met Tuesday evening, Dec. 12 for its Christmas party. Mrs. James Craig, a former member of the club who now lives in Grand Blanc, presented an unusual collection of beautiful madonnas. Her interesting talk on the history of the Madonna, which she traced from its beginning to the present time, was illustrated with color slides.  
Refreshments were served by the hostesses, Mrs. Paul Maroney and Mrs. Wilbur Hinderey.

**WOMAN'S CLUB**  
Woman's club of Chelsea met Tuesday evening, Dec. 12 for its Christmas party. Mrs. James Craig, a former member of the club who now lives in Grand Blanc, presented an unusual collection of beautiful madonnas. Her interesting talk on the history of the Madonna, which she traced from its beginning to the present time, was illustrated with color slides.  
Refreshments were served by the hostesses, Mrs. Paul Maroney and Mrs. Wilbur Hinderey.

**WOMAN'S CLUB**  
Woman's club of Chelsea met Tuesday evening, Dec. 12 for its Christmas party. Mrs. James Craig, a former member of the club who now lives in Grand Blanc, presented an unusual collection of beautiful madonnas. Her interesting talk on the history of the Madonna, which she traced from its beginning to the present time, was illustrated with color slides.  
Refreshments were served by the hostesses, Mrs. Paul Maroney and Mrs. Wilbur Hinderey.

**WOMAN'S CLUB**  
Woman's club of Chelsea met Tuesday evening, Dec. 12 for its Christmas party. Mrs. James Craig, a former member of the club who now lives in Grand Blanc, presented an unusual collection of beautiful madonnas. Her interesting talk on the history of the Madonna, which she traced from its beginning to the present time, was illustrated with color slides.  
Refreshments were served by the hostesses, Mrs. Paul Maroney and Mrs. Wilbur Hinderey.

**WOMAN'S CLUB**  
Woman's club of Chelsea met Tuesday evening, Dec. 12 for its Christmas party. Mrs. James Craig, a former member of the club who now lives in Grand Blanc, presented an unusual collection of beautiful madonnas. Her interesting talk on the history of the Madonna, which she traced from its beginning to the present time, was illustrated with color slides.  
Refreshments were served by the hostesses, Mrs. Paul Maroney and Mrs. Wilbur Hinderey.

**WOMAN'S CLUB**  
Woman's club of Chelsea met Tuesday evening, Dec. 12 for its Christmas party. Mrs. James Craig, a former member of the club who now lives in Grand Blanc, presented an unusual collection of beautiful madonnas. Her interesting talk on the history of the Madonna, which she traced from its beginning to the present time, was illustrated with color slides.  
Refreshments were served by the hostesses, Mrs. Paul Maroney and Mrs. Wilbur Hinderey.

**WOMAN'S CLUB**  
Woman's club of Chelsea met Tuesday evening, Dec. 12 for its Christmas party. Mrs. James Craig, a former member of the club who now lives in Grand Blanc, presented an unusual collection of beautiful madonnas. Her interesting talk on the history of the Madonna, which she traced from its beginning to the present time, was illustrated with color slides.  
Refreshments were served by the hostesses, Mrs. Paul Maroney and Mrs. Wilbur Hinderey.

**WOMAN'S CLUB**  
Woman's club of Chelsea met Tuesday evening, Dec. 12 for its Christmas party. Mrs. James Craig, a former member of the club who now lives in Grand Blanc, presented an unusual collection of beautiful madonnas. Her interesting talk on the history of the Madonna, which she traced from its beginning to the present time, was illustrated with color slides.  
Refreshments were served by the hostesses, Mrs. Paul Maroney and Mrs. Wilbur Hinderey.

**WOMAN'S CLUB**  
Woman's club of Chelsea met Tuesday evening, Dec. 12 for its Christmas party. Mrs. James Craig, a former member of the club who now lives in Grand Blanc, presented an unusual collection of beautiful madonnas. Her interesting talk on the history of the Madonna, which she traced from its beginning to the present time, was illustrated with color slides.  
Refreshments were served by the hostesses, Mrs. Paul Maroney and Mrs. Wilbur Hinderey.

**WOMAN'S CLUB**  
Woman's club of Chelsea met Tuesday evening, Dec. 12 for its Christmas party. Mrs. James Craig, a former member of the club who now lives in Grand Blanc, presented an unusual collection of beautiful madonnas. Her interesting talk on the history of the Madonna, which she traced from its beginning to the present time, was illustrated with color slides.  
Refreshments were served by the hostesses, Mrs. Paul Maroney and Mrs. Wilbur Hinderey.

**WOMAN'S CLUB**  
Woman's club of Chelsea met Tuesday evening, Dec. 12 for its Christmas party. Mrs. James Craig, a former member of the club who now lives in Grand Blanc, presented an unusual collection of beautiful madonnas. Her interesting talk on the history of the Madonna, which she traced from its beginning to the present time, was illustrated with color slides.  
Refreshments were served by the hostesses, Mrs. Paul Maroney and Mrs. Wilbur Hinderey.

**WOMAN'S CLUB**  
Woman's club of Chelsea met Tuesday evening, Dec. 12 for its Christmas party. Mrs. James Craig, a former member of the club who now lives in Grand Blanc, presented an unusual collection of beautiful madonnas. Her interesting talk on the history of the Madonna, which she traced from its beginning to the present time, was illustrated with color slides.  
Refreshments were served by the hostesses, Mrs. Paul Maroney and Mrs. Wilbur Hinderey.

**WOMAN'S CLUB**  
Woman's club of Chelsea met Tuesday evening, Dec. 12 for its Christmas party. Mrs. James Craig, a former member of the club who now lives in Grand Blanc, presented an unusual collection of beautiful madonnas. Her interesting talk on the history of the Madonna, which she traced from its beginning to the present time, was illustrated with color slides.  
Refreshments were served by the hostesses, Mrs. Paul Maroney and Mrs. Wilbur Hinderey.

**WOMAN'S CLUB**  
Woman's club of Chelsea met Tuesday evening, Dec. 12 for its Christmas party. Mrs. James Craig, a former member of the club who now lives in Grand Blanc, presented an unusual collection of beautiful madonnas. Her interesting talk on the history of the Madonna, which she traced from its beginning to the present time, was illustrated with color slides.  
Refreshments were served by the hostesses, Mrs. Paul Maroney and Mrs. Wilbur Hinderey.

**WOMAN'S CLUB**  
Woman's club of Chelsea met Tuesday evening, Dec. 12 for its Christmas party. Mrs. James Craig, a former member of the club who now lives in Grand Blanc, presented an unusual collection of beautiful madonnas. Her interesting talk on the history of the Madonna, which she traced from its beginning to the present time, was illustrated with color slides.  
Refreshments were served by the hostesses, Mrs. Paul Maroney and Mrs. Wilbur Hinderey.

**WOMAN'S CLUB**  
Woman's club of Chelsea met Tuesday evening, Dec. 12 for its Christmas party. Mrs. James Craig, a former member of the club who now lives in Grand Blanc, presented an unusual collection of beautiful madonnas. Her interesting talk on the history of the Madonna, which she traced from its beginning to the present time, was illustrated with color slides.  
Refreshments were served by the hostesses, Mrs. Paul Maroney and Mrs. Wilbur Hinderey.

**ST. MARY ALTAR SOCIETY**  
St. Mary Altar Society met Wednesday, Dec. 6 at the St. Louis School, with 98 members and six guests present. The meeting was opened with a prayer led by the president, Mrs. Kathleen Chapman.  
The Altar Committee for December consists of Mrs. Mary Kniss, Mrs. Kathleen Chapman, Mrs. Vern Buehler and Mrs. Joseph Scott.  
Refreshment chairman for January is Mrs. William Collins.  
Members decided to have the Christmas Flower collection on Sunday, Dec. 17 following all Masses.  
The president announced that the Feast of the Holy Family, a special Mass, will be offered Jan. 14 for couples celebrating their 25th, 40th, or 50th wedding anniversary. Members are asked to submit their names if they are celebrating the above-mentioned anniversaries.  
The boys of the St. Louis school entertained the ladies with band music and the singing of Christmas selections.  
Refreshments were served by Mrs. John Cook and her committee.

**MARION SIMON CIRCLE**  
Marion Simon Circle of the First Methodist church met Wednesday, Dec. 6 at the home of Mrs. Lejoh Palmer, with Mrs. Lejoh Palmer as co-hostesses.  
The business meeting was conducted by Mrs. William Storey, after which the program "on the Christmas stories" was given by the Rev. Robert Worgess.  
An exchange of hand-made Christmas tree ornaments was held.  
The next meeting will be at the home of Mrs. William Storey.

**WSCS**  
WSCS of the First Methodist church met Wednesday, Dec. 6 at 8 p.m. in the educational unit. Hostesses were members of the Grace Circle, with the Wesleyan Service Guild as guests.  
Mrs. Kathleen Bernath, in charge of the program, opened the meeting with a litany of carols, followed by a reading from "The Black Madonna."  
Members recommended that \$50 be sent to the Seminary Loan Fund.  
The next meeting will be a luncheon at 12:30 p.m. Jan. 10 in the church social center. Mrs. Coralee Hoffmeyer will lead the program entitled "Music and Modern Man." Hostesses will be members of the Marion Kline circle.

**WSCS**  
WSCS of the First Methodist church met Wednesday, Dec. 6 at 8 p.m. in the educational unit. Hostesses were members of the Grace Circle, with the Wesleyan Service Guild as guests.  
Mrs. Kathleen Bernath, in charge of the program, opened the meeting with a litany of carols, followed by a reading from "The Black Madonna."  
Members recommended that \$50 be sent to the Seminary Loan Fund.  
The next meeting will be a luncheon at 12:30 p.m. Jan. 10 in the church social center. Mrs. Coralee Hoffmeyer will lead the program entitled "Music and Modern Man." Hostesses will be members of the Marion Kline circle.

**WSCS**  
WSCS of the First Methodist church met Wednesday, Dec. 6 at 8 p.m. in the educational unit. Hostesses were members of the Grace Circle, with the Wesleyan Service Guild as guests.  
Mrs. Kathleen Bernath, in charge of the program, opened the meeting with a litany of carols, followed by a reading from "The Black Madonna."  
Members recommended that \$50 be sent to the Seminary Loan Fund.  
The next meeting will be a luncheon at 12:30 p.m. Jan. 10 in the church social center. Mrs. Coralee Hoffmeyer will lead the program entitled "Music and Modern Man." Hostesses will be members of the Marion Kline circle.

**WSCS**  
WSCS of the First Methodist church met Wednesday, Dec. 6 at 8 p.m. in the educational unit. Hostesses were members of the Grace Circle, with the Wesleyan Service Guild as guests.  
Mrs. Kathleen Bernath, in charge of the program, opened the meeting with a litany of carols, followed by a reading from "The Black Madonna."  
Members recommended that \$50 be sent to the Seminary Loan Fund.  
The next meeting will be a luncheon at 12:30 p.m. Jan. 10 in the church social center. Mrs. Coralee Hoffmeyer will lead the program entitled "Music and Modern Man." Hostesses will be members of the Marion Kline circle.

**WSCS**  
WSCS of the First Methodist church met Wednesday, Dec. 6 at 8 p.m. in the educational unit. Hostesses were members of the Grace Circle, with the Wesleyan Service Guild as guests.  
Mrs. Kathleen Bernath, in charge of the program, opened the meeting with a litany of carols, followed by a reading from "The Black Madonna."  
Members recommended that \$50 be sent to the Seminary Loan Fund.  
The next meeting will be a luncheon at 12:30 p.m. Jan. 10 in the church social center. Mrs. Coralee Hoffmeyer will lead the program entitled "Music and Modern Man." Hostesses will be members of the Marion Kline circle.

**WSCS**  
WSCS of the First Methodist church met Wednesday, Dec. 6 at 8 p.m. in the educational unit. Hostesses were members of the Grace Circle, with the Wesleyan Service Guild as guests.  
Mrs. Kathleen Bernath, in charge of the program, opened the meeting with a litany of carols, followed by a reading from "The Black Madonna."  
Members recommended that \$50 be sent to the Seminary Loan Fund.  
The next meeting will be a luncheon at 12:30 p.m. Jan. 10 in the church social center. Mrs. Coralee Hoffmeyer will lead the program entitled "Music and Modern Man." Hostesses will be members of the Marion Kline circle.

**WSCS**  
WSCS of the First Methodist church met Wednesday, Dec. 6 at 8 p.m. in the educational unit. Hostesses were members of the Grace Circle, with the Wesleyan Service Guild as guests.  
Mrs. Kathleen Bernath, in charge of the program, opened the meeting with a litany of carols, followed by a reading from "The Black Madonna."  
Members recommended that \$50 be sent to the Seminary Loan Fund.  
The next meeting will be a luncheon at 12:30 p.m. Jan. 10 in the church social center. Mrs. Coralee Hoffmeyer will lead the program entitled "Music and Modern Man." Hostesses will be members of the Marion Kline circle.

**WSCS**  
WSCS of the First Methodist church met Wednesday, Dec. 6 at 8 p.m. in the educational unit. Hostesses were members of the Grace Circle, with the Wesleyan Service Guild as guests.  
Mrs. Kathleen Bernath, in charge of the program, opened the meeting with a litany of carols, followed by a reading from "The Black Madonna."  
Members recommended that \$50 be sent to the Seminary Loan Fund.  
The next meeting will be a luncheon at 12:30 p.m. Jan. 10 in the church social center. Mrs. Coralee Hoffmeyer will lead the program entitled "Music and Modern Man." Hostesses will be members of the Marion Kline circle.

**WSCS**  
WSCS of the First Methodist church met Wednesday, Dec. 6 at 8 p.m. in the educational unit. Hostesses were members of the Grace Circle, with the Wesleyan Service Guild as guests.  
Mrs. Kathleen Bernath, in charge of the program, opened the meeting with a litany of carols, followed by a reading from "The Black Madonna."  
Members recommended that \$50 be sent to the Seminary Loan Fund.  
The next meeting will be a luncheon at 12:30 p.m. Jan. 10 in the church social center. Mrs. Coralee Hoffmeyer will lead the program entitled "Music and Modern Man." Hostesses will be members of the Marion Kline circle.

**WSCS**  
WSCS of the First Methodist church met Wednesday, Dec. 6 at 8 p.m. in the educational unit. Hostesses were members of the Grace Circle, with the Wesleyan Service Guild as guests.  
Mrs. Kathleen Bernath, in charge of the program, opened the meeting with a litany of carols, followed by a reading from "The Black Madonna."  
Members recommended that \$50 be sent to the Seminary Loan Fund.  
The next meeting will be a luncheon at 12:30 p.m. Jan. 10 in the church social center. Mrs. Coralee Hoffmeyer will lead the program entitled "Music and Modern Man." Hostesses will be members of the Marion Kline circle.

**WSCS**  
WSCS of the First Methodist church met Wednesday, Dec. 6 at 8 p.m. in the educational unit. Hostesses were members of the Grace Circle, with the Wesleyan Service Guild as guests.  
Mrs. Kathleen Bernath, in charge of the program, opened the meeting with a litany of carols, followed by a reading from "The Black Madonna."  
Members recommended that \$50 be sent to the Seminary Loan Fund.  
The next meeting will be a luncheon at 12:30 p.m. Jan. 10 in the church social center. Mrs. Coralee Hoffmeyer will lead the program entitled "Music and Modern Man." Hostesses will be members of the Marion Kline circle.

**WSCS**  
WSCS of the First Methodist church met Wednesday, Dec. 6 at 8 p.m. in the educational unit. Hostesses were members of the Grace Circle, with the Wesleyan Service Guild as guests.  
Mrs. Kathleen Bernath, in charge of the program, opened the meeting with a litany of carols, followed by a reading from "The Black Madonna."  
Members recommended that \$50 be sent to the Seminary Loan Fund.  
The next meeting will be a luncheon at 12:30 p.m. Jan. 10 in the church social center. Mrs. Coralee Hoffmeyer will lead the program entitled "Music and Modern Man." Hostesses will be members of the Marion Kline circle.

**WSCS**  
WSCS of the First Methodist church met Wednesday, Dec. 6 at 8 p.m. in the educational unit. Hostesses were members of the Grace Circle, with the Wesleyan Service Guild as guests.  
Mrs. Kathleen Bernath, in charge of the program, opened the meeting with a litany of carols, followed by a reading from "The Black Madonna."  
Members recommended that \$50 be sent to the Seminary Loan Fund.  
The next meeting will be a luncheon at 12:30 p.m. Jan. 10 in the church social center. Mrs. Coralee Hoffmeyer will lead the program entitled "Music and Modern Man." Hostesses will be members of the Marion Kline circle.

**WSCS**  
WSCS of the First Methodist church met Wednesday, Dec. 6 at 8 p.m. in the educational unit. Hostesses were members of the Grace Circle, with the Wesleyan Service Guild as guests.  
Mrs. Kathleen Bernath, in charge of the program, opened the meeting with a litany of carols, followed by a reading from "The Black Madonna."  
Members recommended that \$50 be sent to the Seminary Loan Fund.  
The next meeting will be a luncheon at 12:30 p.m. Jan. 10 in the church social center. Mrs. Coralee Hoffmeyer will lead the program entitled "Music and Modern Man." Hostesses will be members of the Marion Kline circle.

**WSCS**  
WSCS of the First Methodist church met Wednesday, Dec. 6 at 8 p.m. in the educational unit. Hostesses were members of the Grace Circle, with the Wesleyan Service Guild as guests.  
Mrs. Kathleen Bernath, in charge of the program, opened the meeting with a litany of carols, followed by a reading from "The Black Madonna."  
Members recommended that \$50 be sent to the Seminary Loan Fund.  
The next meeting will be a luncheon at 12:30 p.m. Jan. 10 in the church social center. Mrs. Coralee Hoffmeyer will lead the program entitled "Music and Modern Man." Hostesses will be members of the Marion Kline circle.

**WSCS**  
WSCS of the First Methodist church met Wednesday, Dec. 6 at 8 p.m. in the educational unit. Hostesses were members of the Grace Circle, with the Wesleyan Service Guild as guests.  
Mrs. Kathleen Bernath, in charge of the program, opened the meeting with a litany of carols, followed by a reading from "The Black Madonna."  
Members recommended that \$50 be sent to the Seminary Loan Fund.  
The next meeting will be a luncheon at 12:30 p.m. Jan. 10 in the church social center. Mrs. Coralee Hoffmeyer will lead the program entitled "Music and Modern Man." Hostesses will be members of the Marion Kline circle.

**WSCS**  
WSCS of the First Methodist church met Wednesday, Dec. 6 at 8 p.m. in the educational unit. Hostesses were members of the Grace Circle, with the Wesleyan Service Guild as guests.  
Mrs. Kathleen Bernath, in charge of the program, opened the meeting with a litany of carols, followed by a reading from "The Black Madonna."  
Members recommended that \$50 be sent to the Seminary Loan Fund.  
The next meeting will be a luncheon at 12:30 p.m. Jan. 10 in the church social center. Mrs. Coralee Hoffmeyer will lead the program entitled "Music and Modern Man." Hostesses will be members of the Marion Kline circle.

### Faculty Wives Discuss Vietnam Project for Spring

Faculty Wives met Monday evening at the home of Mrs. George Prinzling. A short business meeting was held, during which a Vietnam project was tentatively scheduled for March. Members made plans for the January meeting, at which time they will entertain the Faculty Women.  
The November meeting had been spent in making an arithmetic teaching aid for the first grade. The finished project was shown Monday evening and one will be given to each elementary school for use in the first grades. Each member present brought baked goods to be sent to the Bob Benedict home for Christmas.  
After the business meeting, Mrs. Sylvia Ferguson and Mrs. Lucille Masterson presented a Christmas ideas program. Mrs. Ferguson displayed many lovely quick and easy-to-do Christmas decorations. Mrs. Masterson showed how to attractively wrap Christmas gifts, with the idea of retaining the beautiful wrappings after opening the packages. Many helpful ideas were given by both women.

**SUICIDES IN SWEDEN**  
Stockholm—Miss Anne Marie Bolander, bureau director in the Central Office of Statistics, wrote in the Medical Journal that there were more suicides than traffic deaths in Sweden. There were approximately 1,600 suicides to 1,350 traffic deaths a year.

**SUICIDES IN SWEDEN**  
Stockholm—Miss Anne Marie Bolander, bureau director in the Central Office of Statistics, wrote in the Medical Journal that there were more suicides than traffic deaths in Sweden. There were approximately 1,600 suicides to 1,350 traffic deaths a year.

**SUICIDES IN SWEDEN**  
Stockholm—Miss Anne Marie Bolander, bureau director in the Central Office of Statistics, wrote in the Medical Journal that there were more suicides than traffic deaths in Sweden. There were approximately 1,600 suicides to 1,350 traffic deaths a year.

**SUICIDES IN SWEDEN**  
Stockholm—Miss Anne Marie Bolander, bureau director in the Central Office of Statistics, wrote in the Medical Journal that there were more suicides than traffic deaths in Sweden. There were approximately 1,600 suicides to 1,350 traffic deaths a year.

**SUICIDES IN SWEDEN**  
Stockholm—Miss Anne Marie Bolander, bureau director in the Central Office of Statistics, wrote in the Medical Journal that there were more suicides than traffic deaths in Sweden. There were approximately 1,600 suicides to 1,350 traffic deaths a year.

**SUICIDES IN SWEDEN**  
Stockholm—Miss Anne Marie Bolander, bureau director in the Central Office of Statistics, wrote in the Medical Journal that there were more suicides than traffic deaths in Sweden. There were approximately 1,600 suicides to 1,350 traffic deaths a year.

**SUICIDES IN SWEDEN**  
Stockholm—Miss Anne Marie Bolander, bureau director in the Central Office of Statistics, wrote in the Medical Journal that there were more suicides than traffic deaths in Sweden. There were approximately 1,600 suicides to 1,350 traffic deaths a year.

**SUICIDES IN SWEDEN**  
Stockholm—Miss Anne Marie Bolander, bureau director in the Central Office of Statistics, wrote in the Medical Journal that there were more suicides than traffic deaths in Sweden. There were approximately 1,600 suicides to 1,350 traffic deaths a year.

**SUICIDES IN SWEDEN**  
Stockholm—Miss Anne Marie Bolander, bureau director in the Central Office of Statistics, wrote in the Medical Journal that there were more suicides than traffic deaths in Sweden. There were approximately 1,600 suicides to 1,350 traffic deaths a year.

**SUICIDES IN SWEDEN**  
Stockholm—Miss Anne Marie Bolander, bureau director in the Central Office of Statistics, wrote in the Medical Journal that there were more suicides than traffic deaths in Sweden. There were approximately 1,600 suicides to 1,350 traffic deaths a year.

**SUICIDES IN SWEDEN**  
Stockholm—Miss Anne Marie Bolander, bureau director in the Central Office of Statistics, wrote in the Medical Journal that there were more suicides than traffic deaths in Sweden. There were approximately 1,600 suicides to 1,350 traffic deaths a year.

**SUICIDES IN SWEDEN**  
Stockholm—Miss Anne Marie Bolander, bureau director in the Central Office of Statistics, wrote in the Medical Journal that there were more suicides than traffic deaths in Sweden. There were approximately 1,600 suicides to 1,350 traffic deaths a year.

**SUICIDES IN SWEDEN**  
Stockholm—Miss Anne Marie Bolander, bureau director in the Central Office of Statistics, wrote in the Medical Journal that there were more suicides than traffic deaths in Sweden. There were approximately 1,600 suicides to 1,350 traffic deaths a year.

**SUICIDES IN SWEDEN**  
Stockholm—Miss Anne Marie Bolander, bureau director in the Central Office of Statistics, wrote in the Medical Journal that there were more suicides than traffic deaths in Sweden. There were approximately 1,600 suicides to 1,350 traffic deaths a year.

**SUICIDES IN SWEDEN**  
Stockholm—Miss Anne Marie Bolander, bureau director in the Central Office of Statistics, wrote in the Medical Journal that there were more suicides than traffic deaths in Sweden. There were approximately 1,600 suicides to 1,350 traffic deaths a year.

**SUICIDES IN SWEDEN**  
Stockholm—Miss Anne Marie Bolander, bureau director in the Central Office of Statistics, wrote in the Medical Journal that there were more suicides than traffic deaths in Sweden. There were approximately 1,600 suicides to 1,350 traffic deaths a year.

**SUICIDES IN SWEDEN**  
Stockholm—Miss Anne Marie Bolander, bureau director in the Central Office of Statistics, wrote in the Medical Journal that there were more suicides than traffic deaths in Sweden. There were approximately 1,600 suicides to 1,350 traffic deaths a year.

**SUICIDES IN SWEDEN**  
Stockholm—Miss Anne Marie Bolander, bureau director in the Central Office of Statistics, wrote in the Medical Journal that there were more suicides than traffic deaths in Sweden. There were approximately 1,600 suicides to 1,350 traffic deaths a year.

### Arthritis Foundation Increases Funds Allocation for Medical Research

Detroit—The Michigan Chapter, Arthritis Foundation has earmarked the largest amount of money it has ever awarded in one year to support medical research in the battle against arthritis—the nation's No. 1 crippling. A 10 percent increase over last year, totaling \$107,489, has been set aside to finance 15 grants. This is the greatest number of grants ever supported by the Chapter. Money has been allocated to the following Michigan institutions:

Univ. of Michigan \$ 47,047  
Henry Ford Hospital 28,149  
Wayne State Univ. 22,990  
Wayne Co. Gen. Hosp. 4,653  
Rehab. Inst. of Detroit 4,000  
Total \$107,489

Seventy percent of these funds is from contributions made by local community funds, including the Chelsea Community Chest, from all over the State to the Michigan United Fund. The other 30 percent of this money comes from bequests, memorial contributions and special gifts made to the Chapter.

"Because of the Vietnam war and other financial pressures," according to Dr. James J. Lightbody, medical director, "governmental support of medical research through the U. S. Public Health Service has been substantially reduced. It is more important than ever before that such voluntary health agencies as the Arthritis Foundation receive financial support from the public to enable it

to continue and increase its support of vital medical research."

**'Message of the Bells' Is Christmas Theme for Immanuel Bible Church**  
The special Christmas program of Immanuel Bible church will be presented at 7 p.m. on Sunday evening, Dec. 17.  
The large and small bells to be played during the program will have a message of love, of peace, of joy and of salvation.  
The public is invited to see and hear church members, from adults down to the smallest children, participate in words and music as they furnish the background for the "Message of the Bells."

Tiger first sacker Don Pepper is a turkey farmer in the off-season in Saratoga Springs, N. Y. Gloria Vaughn as guests.

### MWRC CHRISTMAS PARTY

Washtenaw Chapter of the Michigan Wolverine Radio Club held its Christmas party at the K. of C. Hall Sunday afternoon, Dec. 10.  
A pot-luck dinner opened the festivities, followed by a short business meeting, consisting mostly of election of officers for the coming year.  
The new slate of officers for 1968 is as follows: Carl Rupert, president; Delmar Bentley, vice-president; Dorothy Stanley, secretary; Joe Stanley, treasurer; George Paxton, sergeant-at-arms; and Jim Versalles, member-at-large. Dorothy Stanley was appointed club reporter.

After the meeting adjourned, President Bill Lentz, acting in behalf of Santa Claus who was too busy to leave his workshop at this time, passed out gifts to all the members and their children. The club was pleased to have Jim and Kay Carpenter and their two children, of Stockbridge, and Gloria Vaughn as guests.

After the meeting adjourned, President Bill Lentz, acting in behalf of Santa Claus who was too busy to leave his workshop at this time, passed out gifts to all the members and their children. The club was pleased to have Jim and Kay Carpenter and their two children, of Stockbridge, and Gloria Vaughn as guests.

After the meeting adjourned, President Bill Lentz, acting in behalf of Santa Claus who was too busy to leave his workshop at this time, passed out gifts to all the members and their children. The club was pleased to have Jim and Kay Carpenter and their two children, of Stockbridge, and Gloria Vaughn as guests.

After the meeting adjourned, President Bill Lentz, acting in behalf of Santa Claus who was too busy to leave his workshop at this time, passed out gifts to all the members and their children. The club was pleased to have Jim and Kay Carpenter and their two children, of Stockbridge, and Gloria Vaughn as guests.

After the meeting adjourned, President Bill Lentz, acting in behalf of Santa Claus who was too busy to leave his workshop at this time, passed out gifts to all the members and their children. The club was pleased to have Jim and Kay Carpenter and their two children, of Stockbridge, and Gloria Vaughn as guests.

After the meeting adjourned, President Bill Lentz, acting in behalf of Santa Claus who was too busy to leave his workshop at this time, passed out gifts to all the members and their children. The club was pleased to have Jim and Kay Carpenter and their two children, of Stockbridge, and Gloria Vaughn as guests.

After the meeting adjourned, President Bill Lentz, acting in behalf of Santa Claus who was too busy to leave his workshop at this time, passed out gifts to all the members and their children. The club was pleased to have Jim and Kay Carpenter and their two children, of Stockbridge, and Gloria Vaughn as guests.

After the meeting adjourned, President Bill Lentz, acting in behalf of Santa Claus who was too busy to leave his workshop at this time, passed out gifts to all the members and their children. The club was pleased to have Jim and Kay Carpenter and their two children, of Stockbridge, and Gloria Vaughn as guests.

After the meeting adjourned, President Bill Lentz, acting in behalf of Santa Claus who was too busy to leave his workshop at this time, passed out gifts to all the members and their children. The club was pleased to have Jim and Kay Carpenter and their two children, of Stockbridge, and Gloria Vaughn as guests.

After the meeting adjourned, President Bill Lentz, acting in behalf of Santa Claus who was too busy to leave his workshop at this time, passed out gifts to all the members and their children. The club was pleased to have Jim and Kay Carpenter and their two children, of Stockbridge, and Gloria Vaughn as guests.

After the meeting adjourned, President Bill Lentz, acting in behalf of Santa Claus who was too busy to leave his workshop at this time, passed out gifts to all the members and their children. The club was pleased to have Jim and Kay Carpenter and their two children, of Stockbridge, and Gloria Vaughn as guests.

After the meeting adjourned, President Bill Lentz, acting in behalf of Santa Claus who was too busy to leave his workshop at this time, passed out gifts to all the members and their children. The club was pleased to have Jim and Kay Carpenter and their two children, of Stockbridge, and Gloria Vaughn as guests.

After the meeting adjourned, President Bill Lentz, acting in behalf of Santa Claus who was too busy to leave his workshop at this time, passed out gifts to all the members and their children. The club was pleased to have Jim and Kay Carpenter and their two children, of Stockbridge, and Gloria Vaughn as guests.

After the meeting adjourned, President Bill Lentz, acting in behalf of Santa Claus who was too busy to leave his workshop at this time, passed out gifts to all the members and their children. The club was pleased to have Jim and Kay Carpenter and their two children, of Stockbridge, and Gloria Vaughn as guests.

After the meeting adjourned, President Bill Lentz, acting in behalf of Santa Claus who was too busy to leave his workshop at this time, passed out gifts to all the members and their children. The club was pleased to have Jim and Kay Carpenter and their two children, of Stockbridge, and Gloria Vaughn as guests.

After the meeting adjourned, President Bill Lentz, acting in behalf of Santa Claus who was too busy to leave his workshop at this time, passed out gifts to all the members and their children. The club was pleased to have Jim and Kay Carpenter and their two children, of Stockbridge, and Gloria Vaughn as guests.

After the meeting adjourned, President Bill Lentz, acting in behalf of Santa Claus who was too busy to leave his workshop at this time, passed out gifts to all the members and their children. The club was pleased to have Jim and Kay Carpenter and their two children, of Stockbridge, and Gloria Vaughn as guests.

After the meeting adjourned, President Bill Lentz, acting in behalf of Santa Claus who was too busy to leave his workshop at this time, passed out gifts to all the members and their children. The club was pleased to have Jim and Kay Carpenter and their two children, of Stockbridge, and Gloria Vaughn as guests.

**TIPS for your TOP from**

**ODDY and FRAN**  
Shopping for stocking fillers? Have 'em!  
Gift Certificates  
Cosmetics  
Eye Make-up  
Night Turbans  
Slogans  
Men's Clothes—Brushes  
Sunglasses  
Traclets  
Wool  
Wool  
Wool

# Come in and Select from over 225 Models of Our Magnificent Magnavox Home Entertainment Values!

Magnavox solid-state Stereo Consoles and Portables... bring you a vast improvement in the re-creation of music!

Advanced solid-state circuitry replaces tubes and damaging heat... to bring you a new standard of performance plus lasting reliability!

**Compact Stereo Phonograph**—ideal for apartments or wherever space is a problem. Amazing performance from 20-Watts undistorted music power, four high fidelity speakers. Lets your records last a lifetime! Detachable legs also permit use on tables, shelves. All styles also available with Stereo FM/AM Radio—\$198.50



Take-along portable—that's big on sound, even bigger on reliability • Model 244 with: swing-down player that lets your records last a lifetime • powerful solid-state amplifier • two extended-range speakers—either swing-out or lift-off their hinges for thrilling space-separation in larger rooms • In several beautiful colors.

**\$99.90**

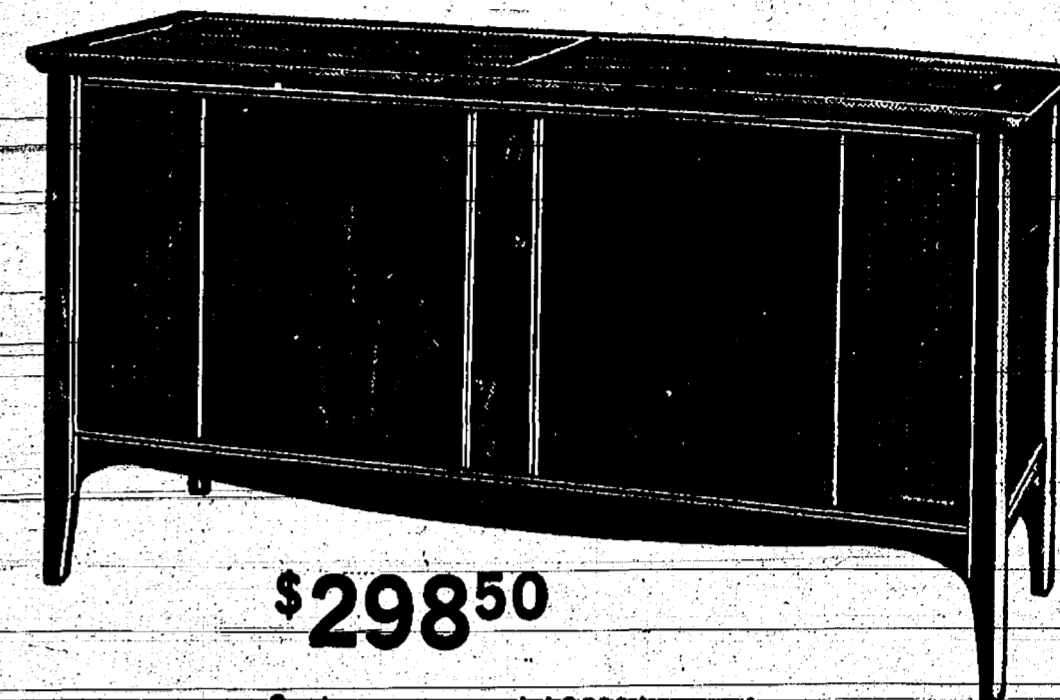


model 3003

**\$159.50**

Your choice of four styles: Mediterranean (above), Contemporary, French Provincial or beautiful Colonial.

Astro-Sonic Stereo... the most thrilling way to enjoy beautiful music in your home!



**\$298.50**

Contemporary model 3600 is one of over thirty authentic fine furniture styles.

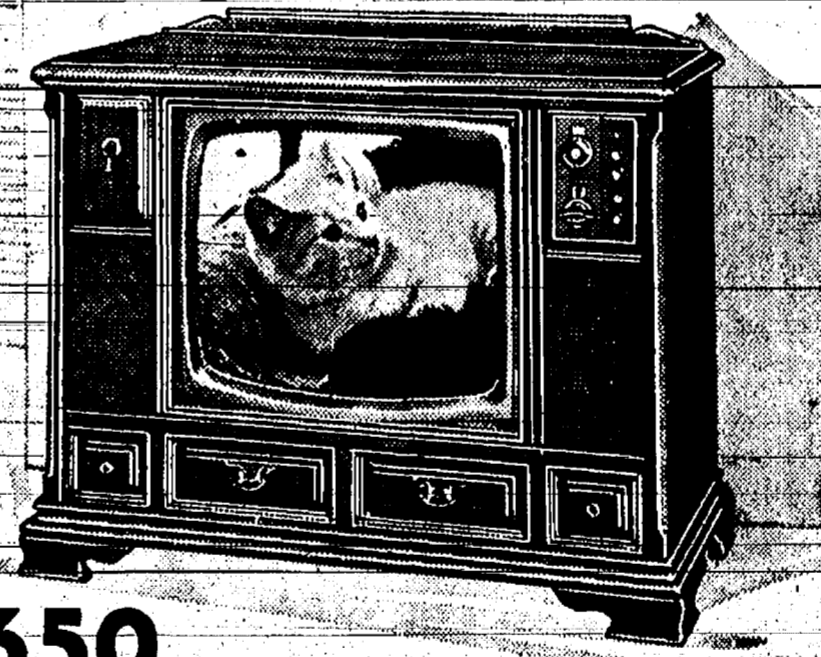
Whether from records, glorious Stereo FM, noise-free and drift-free FM, or powerful AM Radio; no other makes today—at any price—can equal the breathtaking dimensional realism and tonal purity of an Astro-Sonic Stereo Radio-Phonograph! This exceptional value offers: Two 12" high efficiency Bass Woofers, two 1,000 cycle Exponential Treble Horns with the equivalent acoustical efficiency of over 20 treble cone speakers, plus the fabulous Micromatic Player that banishes discernible record/stylus wear—and lets your records last a lifetime!

# Magnavox TV

INSTANTLY fine tunes itself AUTOMATICALLY

## 8 Factual Reasons why Magnavox Color TV is your best buy:

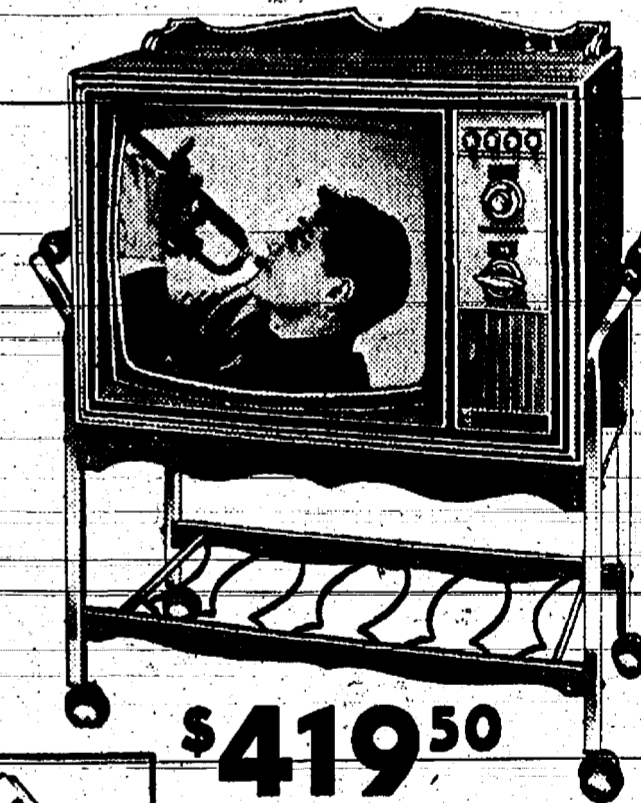
1. **Just turn your set on!** Revolutionary Instant Automatic Color—perfected and introduced by Magnavox in 1964—fine tunes itself automatically! This most important advance in Color TV gives you a perfectly tuned picture that stays precise—on every channel, every time!
2. **Magnavox Brilliant Color**—brings you brighter, more vivid and far more natural color pictures than most other makes today.
3. **Magnavox Quick-On**—lets pictures flash-on four times faster; eliminates the annoying waiting period during "warm-up" in ordinary makes.
4. **Exclusive Chromatone**—adds richer colors plus thrilling depth and beauty to color; eye-pleasing warmth to black and white pictures.
5. **Automatic Color Purifier**—lets you move your Magnavox, even to other rooms; without the need of calling a serviceman to readjust the picture.
6. **Magnavox High Fidelity Sound**—brings you the added pleasure of much greater program realism. Every model has a Tone Control; most have multiple speaker systems.
7. **Beautiful Magnavox Furniture**—will be a lasting expression of your good taste. Select from over 40 authentic styles—in a wide variety of finishes.
8. **Highest Reliability**—is assured by the exclusive "Bonded Circuitry" chassis. You'll enjoy the lasting satisfaction that comes from knowing you own today's finest, most reliable Color TV!



**\$650**

The Putnam—Instant Automatic Color, Early American model 756 authentically captures the spirit, the informal furniture elegance of this country's Colonial period. Same features as above and left. On swivel casters.

Charming COMPACT Colonial model



**\$419.50**

Mobile Cart and Remote Control optional



only **\$675**

This all-inclusive STEREO THEATRE family entertainment center

... will bring you vivid 226 sq. in. rectangular color pictures; plus true stereo high fidelity listening enjoyment from solid-state Stereo FM/AM Radio... and fabulous Stereo Phonograph that lets your records last a lifetime. Priced far below what you'd expect to pay, Astro-Sonic Color Stereo Theatre model 779 with four high fidelity speakers—is one of fourteen magnificent Magnavox fine furniture styles (others shown inside).

# FRIGID PRODUCTS

113 North Main Street, Chelsea

LLOYD R. HEYDLAUFF

Phone GR 9-6651